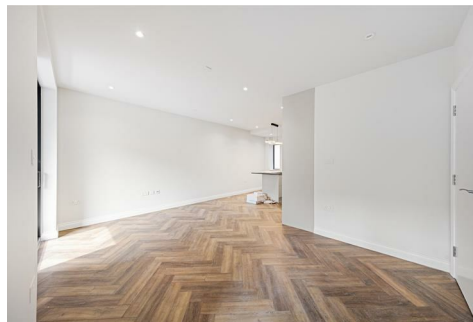
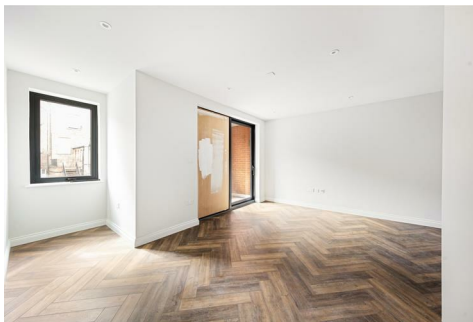


# STAPLETON LONG

Estate Agents & Chartered Surveyors

EST 1907



**Dalton Street, London, SE27 9HS**

**Brand New First Floor Flat**

**One Bedroom**

**Open/plan**

**Balcony**

**No Onward Chain**

**£400,000 Leasehold**

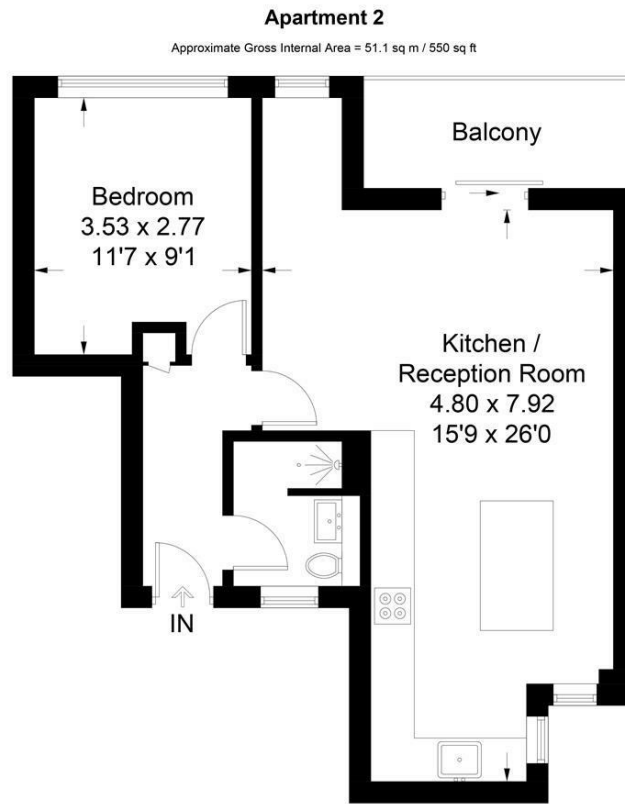
**TO VIEW THIS PROPERTY CALL: 020 8670 9111**

Email: [norwood.sales@stapletonlong.co.uk](mailto:norwood.sales@stapletonlong.co.uk)

[www.stapletonlong.co.uk](http://www.stapletonlong.co.uk)

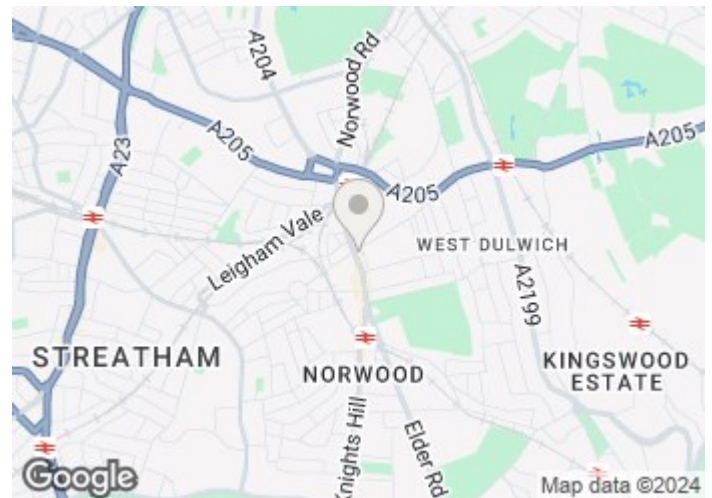
This first floor brand new apartment under the final stages of construction, comprising of entrance hall, shower room, bedroom and open plan lounge kitchen. The kitchen is fully fitted with integrated double oven, fridge/freezer, dishwasher, washing machine and an island/breakfast bar. Other benefits include double glazed windows, electric heating and private front facing balcony. Internal inspection highly recommended, view now

Brand new lease and no onward chain



Energy Efficiency Rating		Current	Potential
<i>Very energy efficient - lower running costs</i>			
(92 plus) <b>A</b>			
(81-91) <b>B</b>			
(69-80) <b>C</b>			
(55-68) <b>D</b>			
(39-54) <b>E</b>			
(21-38) <b>F</b>			
(1-20) <b>G</b>			
<i>Not energy efficient - higher running costs</i>			
<b>England &amp; Wales</b>	EU Directive 2002/91/EC		

Environmental Impact (CO <sub>2</sub> ) Rating		Current	Potential
<i>Very environmentally friendly - lower CO<sub>2</sub> emissions</i>			
(92 plus) <b>A</b>			
(81-91) <b>B</b>			
(69-80) <b>C</b>			
(55-68) <b>D</b>			
(39-54) <b>E</b>			
(21-38) <b>F</b>			
(1-20) <b>G</b>			
<i>Not environmentally friendly - higher CO<sub>2</sub> emissions</i>			
<b>England &amp; Wales</b>	EU Directive 2002/91/EC		



Please Note: All dimensions are approximate and are quoted for guidance only. Reference to appliances and/or services does not imply that they are necessarily in working order or fit for the purpose. We have been advised by the vendor of the freehold/leasehold status of the property and you should have this, together with any other information provided concerning the tenure of the property, checked by your solicitor. The position regarding fixtures and fittings and, where the property has been extended/converted, the position regarding planning approval and building regulation compliance, should also be checked by your solicitor. These particulars do not constitute or form part of an offer or contract nor may they be regarded as representations. All interest parties must themselves verify their accuracy.