



Hanbury Square, Petersfield

**£1,250 PCM**



**Williams of Petersfield**

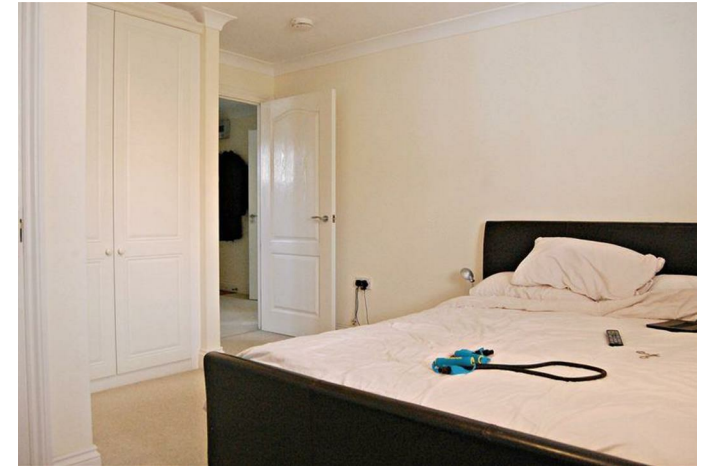
INDEPENDENT ESTATE AGENTS

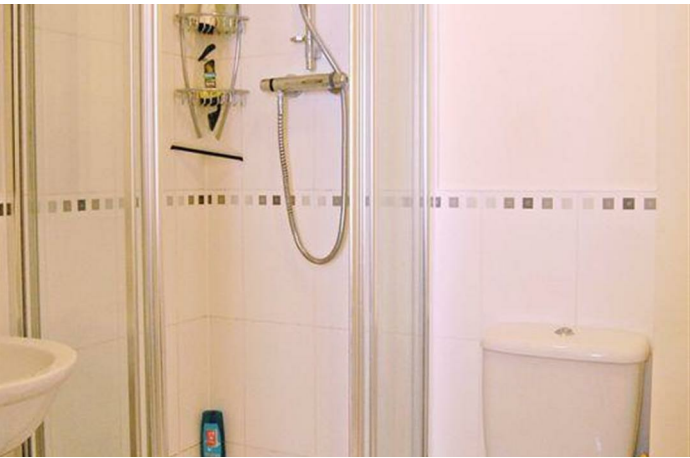
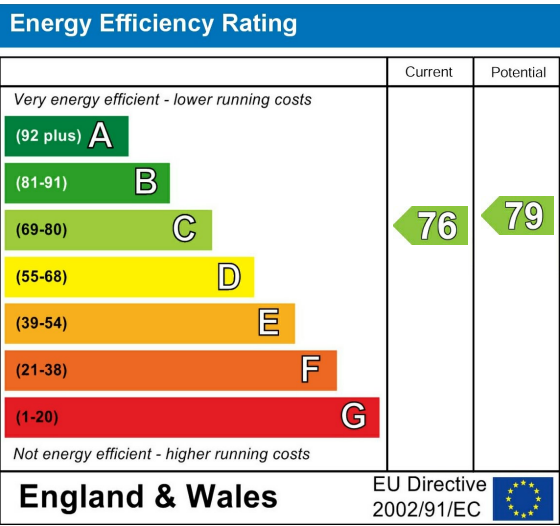


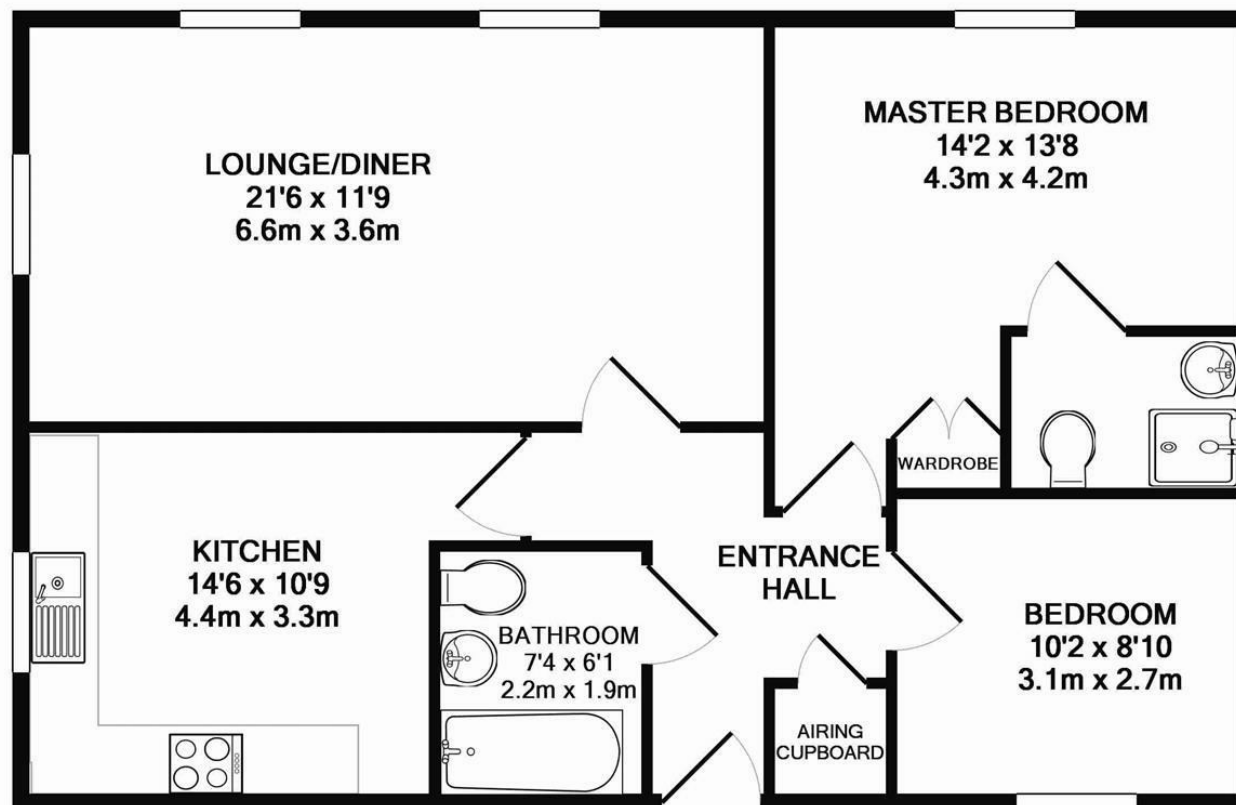
## Hanbury Square, Petersfield

A modern two bedroom spacious apartment located on the popular Ramshill Development with allocated parking. The property is on the second floor has secure entry-phone system, gas central heating and UVPC double glazing throughout. The hallway is spacious and has a large airing cupboard housing the hot water tank. The lounge/dining room is dual aspect and of generous proportions. The kitchen breakfast room has wall and floor units and integrated appliances, including oven and hob, extractor fan, washing machine and dishwasher. There is space for a fridge/freezer and space for a table and chairs. The master bedroom has en suite shower room. The second bedroom is a double room and there is a further family bathroom with shower over the bath. The location is ideal for easy access to the A3 and main line, station and town centre.

No Pets  
Council Tax Band - C  
EOC - C







TOTAL APPROX. FLOOR AREA 790 SQ.FT. (73.4 SQ.M.)

Whilst every attempt has been made to ensure the accuracy of the floor plan contained here, measurements of doors, windows, rooms and any other items are approximate and no responsibility is taken for any error, omission, or mis-statement. This plan is for illustrative purposes only and should be used as such by any prospective purchaser. The services, systems and appliances shown have not been tested and no guarantee as to their operability or efficiency can be given

Made with Metropix ©2012

## Williams of Petersfield

6 - 8 College Street, Petersfield, Hampshire, GU31 4AD

01730 233333 sales@williamsopetersfield.co.uk www.williamsopetersfield.co.uk

The Property Misdescriptions Act 1991: The Agent has not tested any apparatus, equipment, fixtures and fittings or services and so cannot verify that they are in working order or fit for the purpose. A buyer is advised to obtain verification from their solicitor or surveyor. References to the tenure of a property are based upon information supplied by the seller. The agent has not had sight of the title documents. A buyer is advised to obtain verification from their solicitor. Items shown in photographs are NOT included unless specifically mentioned within the sales particulars. They may however be available by separate negotiation. Buyers must check the availability of any property and make an appointment to view before embarking on any journey to see a property.