



Kings Road, Petersfield

Asking Price £140,000



Williams of Petersfield

INDEPENDENT ESTATE AGENTS

Kings Road, Petersfield

Discover the potential of this newly refurbished studio apartment in the heart of Petersfield, just a short stroll from the mainline train station, Petersfield town centre and easy access onto the A3.

Positioned on the first floor, this rare studio apartment now boasts a stylish refurbishment, featuring brand new flooring throughout, a modern new front door, and a beautifully updated kitchen. The kitchen is finished with rich blue cabinets and has been cleverly designed to maximize storage space.

The main studio room includes a smart fold-away bed, creating a flexible living space perfect for day-to-day comfort. While the bathroom offers a clean and functional setup, it presents an exciting opportunity for further personalisation, ideal for first-time buyers looking to add their own touch or for investors seeking a property with strong rental appeal.

Between the main living area and the bathroom, there is a dedicated space ideal for a wardrobe or additional storage.

The apartment has an allocated parking space.

EPC - C

Council Tax - A

956 years remaining on lease.

No block management.

No onward chain.



Location

Petersfield is a market town and civil parish in the East Hampshire district of Hampshire. It is 17 miles north of Portsmouth on the A3 road. The town has its own railway station on the Portsmouth direct line, the mainline rail link- connecting Portsmouth and London (Waterloo). The town is situated on the northern slopes of the South Downs. Petersfield lies wholly within an area of outstanding natural beauty and within the boundary of the South Downs National Park. The town is on the crossroads of the well-used north-south (A3) and east-west (A272) routes and it originally grew as a coach stop on the Portsmouth to London route. Petersfield is twinned with Barentin in France and Warendorf in Germany. Petersfield is a popular location for families, due to the choices of schools available, including; Churchers College, The Petersfield School (TPS) Herne Junior school and a number of infant schools and playgroups nearby. The town centre offers a good selection of shops and facilities, including Waitrose, Tesco's and Lidl supermarkets and a mixture of High street brands and local independent businesses. Being within the South Downs National Park there are a plethora of country walks and cycle paths and the jewel in the Town's crown is the Heath & Lake.

Local authority

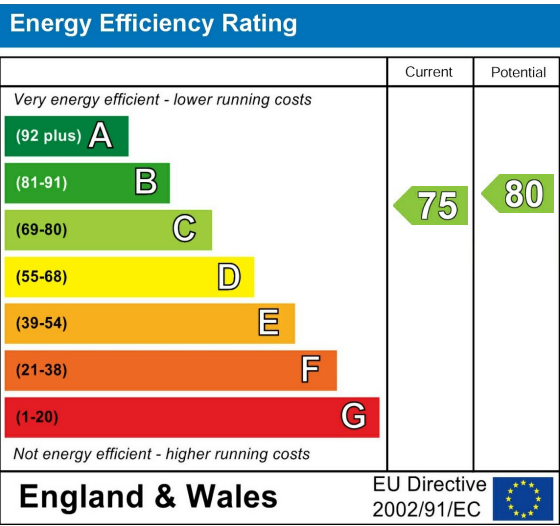
East Hampshire District Council
Penns Place, Petersfield
Hampshire, GU31 4EX
01730 266551

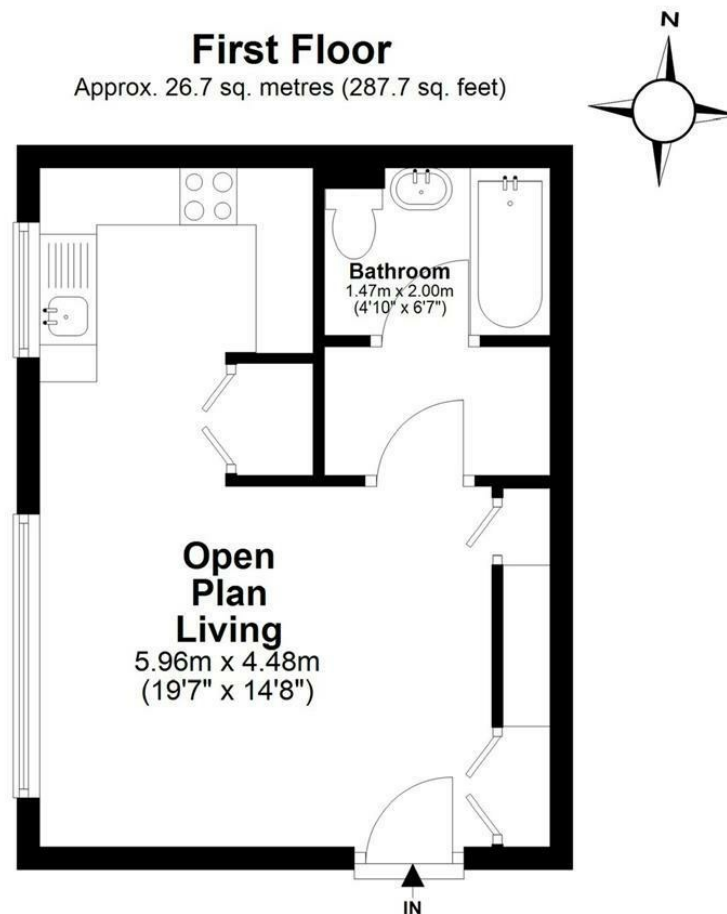
Additional Information

Electric heating

Tenure

Leasehold





Total area: approx. 26.7 sq. metres (287.7 sq. feet)

This plan has been produced by E Property Marketing for illustrative purposes only and should be used as such by any prospective purchaser. Whilst every effort has been made to ensure the accuracy of this plan, measurements of doors, windows, rooms, and other items are approximate. No responsibility is taken for any error, omission, or misstatement.

Williams of Petersfield

6 - 8 College Street, Petersfield, Hampshire, GU31 4AD

01730 233333 sales@williamsopetersfield.co.uk www.williamsopetersfield.co.uk

The Property Misdescriptions Act 1991: The Agent has not tested any apparatus, equipment, fixtures and fittings or services and so cannot verify that they are in working order or fit for the purpose. A buyer is advised to obtain verification from their solicitor or surveyor. References to the tenure of a property are based upon information supplied by the seller. The agent has not had site of the title documents. A buyer is advised to obtain verification from their solicitor. Items shown in photographs are NOT included unless specifically mentioned within the sales particulars. They may however be available by separate negotiation. Buyers must check the availability of any property and make an appointment to view before embarking on any journey to see a property.