



Compton, Chichester

**£2,400 Per Month**



**Williams of Petersfield**

INDEPENDENT ESTATE AGENTS



# Compton, Chichester

Available at the beginning of September 2024, a beautiful period cottage, one of a row of three cottages built around 1885, situated in heart of the south downs national park in the small rural pretty village of Compton with its amenities, including a church, primary school, a village shop with tea rooms and a public house. The more comprehensive facilities of both Chichester and Petersfield can be found at 10 and 7 miles respectively. (further information available on our brochure)

A pristinely presented property ideally suited to applicants with a passion for outdoor pursuits, with miles of bridleways and country lanes on your doorstep or applicants that love peace and tranquillity.

Internally, the accommodation consists of a sitting/family room with a wood-burning stove being the focal point of both rooms. In addition there is a snug/studio to the rear of the property, a gorgeous and sunny dining area with skylight and the kitchen breakfast room with a range cooker and farmhouse table.

On the first floor there is a master bedroom with built in wardrobes and shower room en-suite, the family bathroom with shower head attachment. Completing the accommodation are three further well proportioned bedrooms each with retained character features.

The property has also, recently been fitted with a Heat Source Pump, which provides a more economical, eco-friendly and convenience source of energy.

Pets Considered.  
Furnishings Negotiable.  
EPC - D  
Council Tax - F





## Location

The village of Compton has a number of amenities including a church, primary school, a village shop with tea rooms and a public house. Being in the heart of The South Downs National Park, the village and surrounding area is perfect for outdoor activities. Further amenities can be found in Petersfield, approximately seven miles to the north. Petersfield offers a variety of amenities in its town centre. Shops include Waitrose, M&S Food, Tesco, a number of cafes and further shops.

The Petersfield train station provides a direct service to London Waterloo to the north (in approximately an hour) and Portsmouth to the south. The town has many active clubs and societies with golf available at Petersfield and Liphook, horse and motor racing at Goodwood, Polo at Cowdray Park and sailing along the south coast. There are many excellent schools in the area including Churcher's College, Bedales, Ditcham Park and The Petersfield School.


The beautiful city of Chichester, to the south, is set within the ancient Roman Walls that surround the town centre. It has a wealth of historical landmarks, buildings and places of special interest. There are fine examples of Georgian architecture across the city as well as the stunning 12th century Cathedral.

## Local authority - Chichester

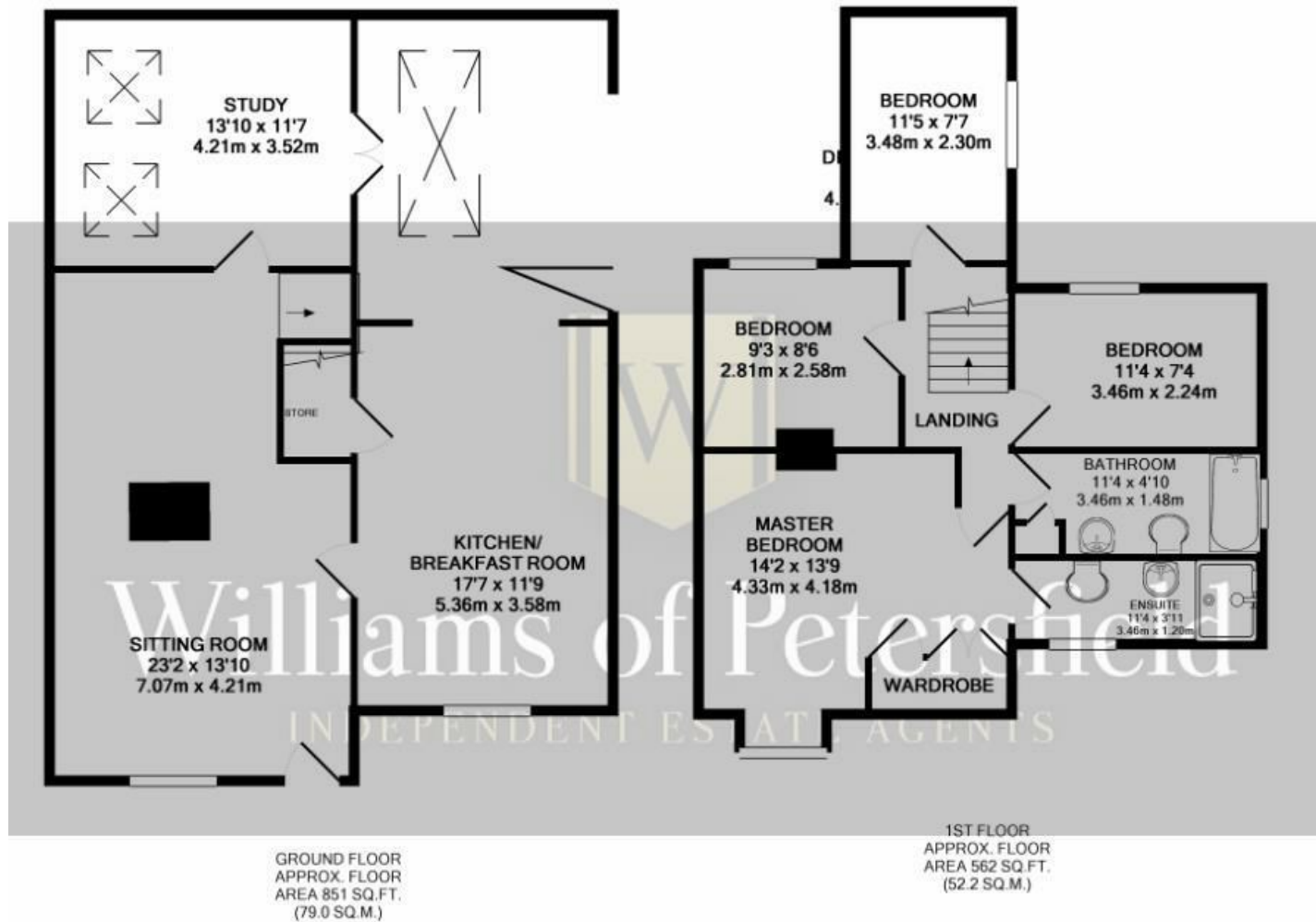
Chichester District Council  
East Pallant House, 1 East Pallant  
Chichester  
West Sussex  
PO19 1TY  
01243 785166

## Additional Information

All main services

Energy Efficiency Rating		
	Current	Potential
<i>Very energy efficient - lower running costs</i>		
(92 plus) <b>A</b>		<b>87</b>
(81-91) <b>B</b>	<b>79</b>	
(69-80) <b>C</b>		
(55-68) <b>D</b>		
(39-54) <b>E</b>		
(21-38) <b>F</b>		
(1-20) <b>G</b>		
<i>Not energy efficient - higher running costs</i>		
<b>England &amp; Wales</b>	EU Directive 2002/91/EC	





Whilst every attempt has been made to ensure the accuracy of the floor plan contained here, measurements of doors, windows, rooms and any other items are approximate and no responsibility is taken for any error, omission, or mis-statement. This plan is for illustrative purposes only and should be used as such by any prospective purchaser. The services, systems and appliances shown have not been tested and no guarantee as to their operability or efficiency can be given  
Made with Metropix ©2019

**Williams of Petersfield**

6 - 8 College Street, Petersfield, Hampshire, GU31 4AD

01730 233333 sales@williamsopetersfield.co.uk www.williamsopetersfield.co.uk

The Property Misdescriptions Act 1991: The Agent has not tested any apparatus, equipment, fixtures and fittings or services and so cannot verify that they are in working order or fit for the purpose. A buyer is advised to obtain verification from their solicitor or surveyor. References to the tenure of a property are based upon information supplied by the seller. The agent has not had site of the title documents. A buyer is advised to obtain verification from their solicitor. Items shown in photographs are NOT included unless specifically mentioned within the sales particulars. They may however be available by separate negotiation. Buyers must check the availability of any property and make an appointment to view before embarking on any journey to see a property.