



Chapel Street, Petersfield

£900 Per Month



Williams of Petersfield

INDEPENDENT ESTATE AGENTS

Chapel Street, Petersfield

A great opportunity to let this unique commercial premises only a moments walk from the heart of the lovely Petersfield town. It is a stones throw away from the mainline train station.


Through the front door, there are lovely large windows, a very versatile space, perfect for small business or boutique.

Early viewing is highly recommended to avoid missing out.

EPC - Pending
Business Rates

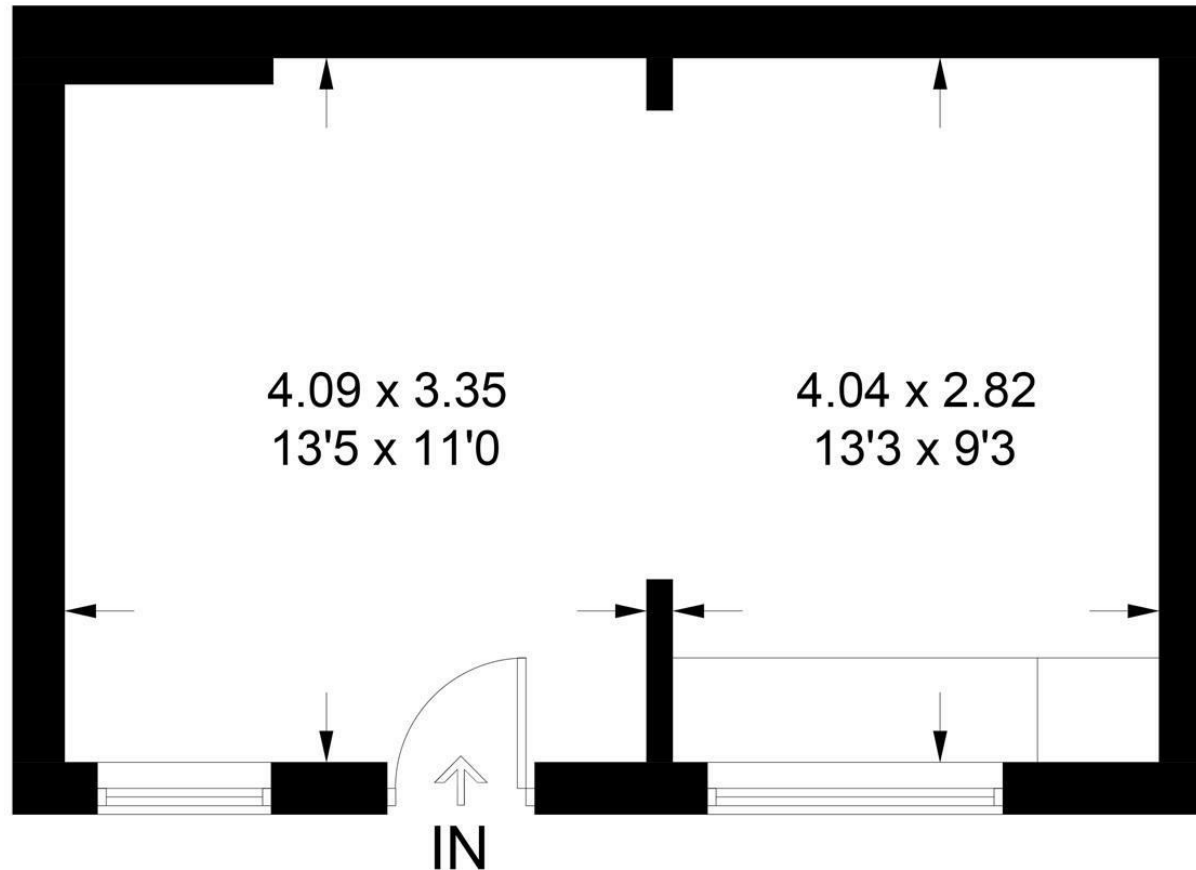


Energy Efficiency Rating

	Current	Potential
<i>Very energy efficient - lower running costs</i>		
(92 plus) A		
(81-91) B		
(69-80) C		
(55-68) D		
(39-54) E		
(21-38) F		
(1-20) G		
<i>Not energy efficient - higher running costs</i>		
England & Wales	EU Directive 2002/91/EC	

Chapel Street, GU32 3DY

Approximate Gross Internal Area = 25.6 sq m / 275 sq ft



Ground Floor

These plans are for representation purposes only as defined by RICS - Code of Measuring Practice. Not to Scale.
Produced for Williams of Petersfield. (ID1025593)

Williams of Petersfield

6 - 8 College Street, Petersfield, Hampshire, GU31 4AD

01730 233333 sales@williamsorpetersfield.co.uk www.williamsorpetersfield.co.uk

The Property Misdescriptions Act 1991: The Agent has not tested any apparatus, equipment, fixtures and fittings or services and so cannot verify that they are in working order or fit for the purpose. A buyer is advised to obtain verification from their solicitor or surveyor. References to the tenure of a property are based upon information supplied by the seller. The agent has not had site of the title documents. A buyer is advised to obtain verification from their solicitor. Items shown in photographs are NOT included unless specifically mentioned within the sales particulars. They may however be available by separate negotiation. Buyers must check the availability of any property and make an appointment to view before embarking on any journey to see a property.