



Charles Street, Petersfield

Offers Over £87,500



Williams of Petersfield

INDEPENDENT ESTATE AGENTS

Charles Street, Petersfield

Offered to the market with No Onward chain is this one bedroom, age restricted, over 60's apartment. The property is very conveniently located for the town centre and positioned well for the train station, taxi and bus services.

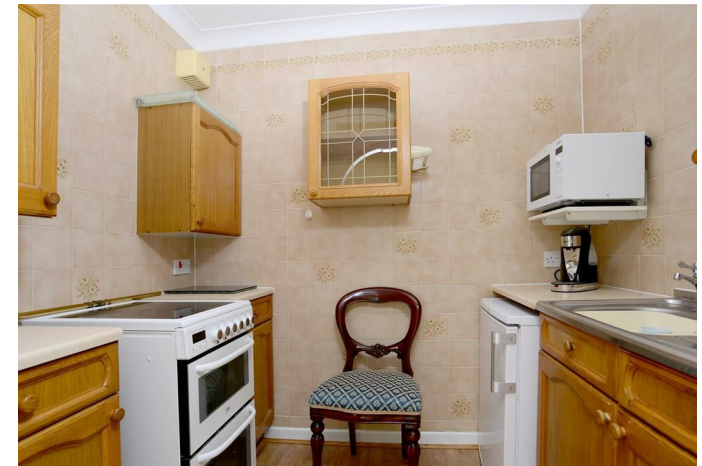
The owner of the flat also has access to a range of communal facilities including laundry room, refuse room, residents lounge and kitchen. For overnight visitors there is a guest suite which needs to be booked in advance and there is an emergency call system available. A lift services all floors and there is a phone entry system for security.

The accommodation itself consist of a generous living room which leads through into the kitchen. The space is very light and airy and benefits from new carpets throughout. A bedroom with built in wardrobes and room enough for a double bed. Off the hallway is a large storage cupboard and the shower room completes the accommodation.

There is also the added benefit of communal garden and parking.

All viewings are conducted with health and safety in mind so please be aware that you may be required to wear PPE on viewings. All staff will be continuing to follow strict hygiene guidelines both on viewings and in the office.

EPC - B



Location

Petersfield is a market town and civil parish in the East Hampshire district of Hampshire. It is 17 miles north of Portsmouth on the A3 road. The town has its own railway station on the Portsmouth direct line, the mainline rail link- connecting Portsmouth and London (Waterloo). The town is situated on the northern slopes of the South Downs. Petersfield lies wholly within an area of outstanding natural beauty and within the boundary of the South Downs National Park. The town is on the crossroads of the well-used north-south (A3) and east-west (A272) routes and it originally grew as a coach stop on the Portsmouth to London route. Petersfield is twinned with Barentin in France and Warendorf in Germany. Petersfield is a popular location for families, due to the choices of schools available, including; Churchers College, The Petersfield School (TPS) Herne Junior school and a number of infant schools and playgroups nearby. The town centre offers a good selection of shops and facilities, including Waitrose, Tescos and Lidl supermarkets and a mixture of High street brands and local independent businesses. Being within the South Downs National Park there are a plethora of country walks and cycle paths and the jewel in the Town's crown is the Heath & Lake.


Local authority

East Hampshire District Council
Penns Place, Petersfield
Hampshire, GU31 4EX
01730 266551

Tenure

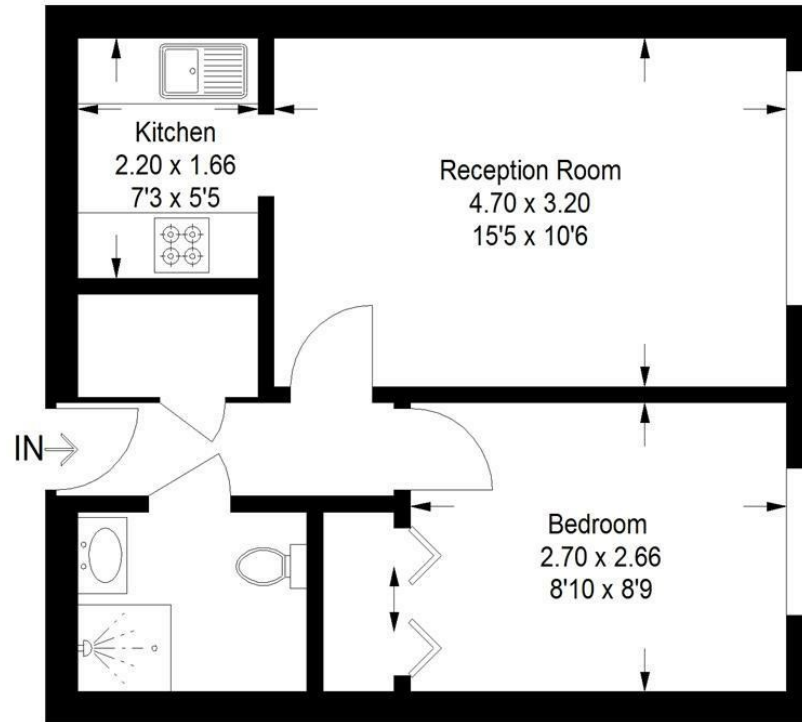
Leasehold

Energy Efficiency Rating

	Current	Potential
<i>Very energy efficient - lower running costs</i>		
(92 plus) A		
(81-91) B	84	84
(69-80) C		
(55-68) D		
(39-54) E		
(21-38) F		
(1-20) G		
<i>Not energy efficient - higher running costs</i>		
England & Wales	EU Directive 2002/91/EC	



Approximate Gross Internal Area
39.2 sq m / 422 sq ft



Second Floor

Illustration for identification purposes only, measurements are approximate,
not to scale. floorplansUsketch.com © (ID667672)

Williams of Petersfield

6 - 8 College Street, Petersfield, Hampshire, GU31 4AD

01730 233333 sales@williamsopetersfield.co.uk www.williamsopetersfield.co.uk

The Property Misdescriptions Act 1991: The Agent has not tested any apparatus, equipment, fixtures and fittings or services and so cannot verify that they are in working order or fit for the purpose. A buyer is advised to obtain verification from their solicitor or surveyor. References to the tenure of a property are based upon information supplied by the seller. The agent has not had site of the title documents. A buyer is advised to obtain verification from their solicitor. Items shown in photographs are NOT included unless specifically mentioned within the sales particulars. They may however be available by separate negotiation. Buyers must check the availability of any property and make an appointment to view before embarking on any journey to see a property.