



redrose

88 Ayrshire Close

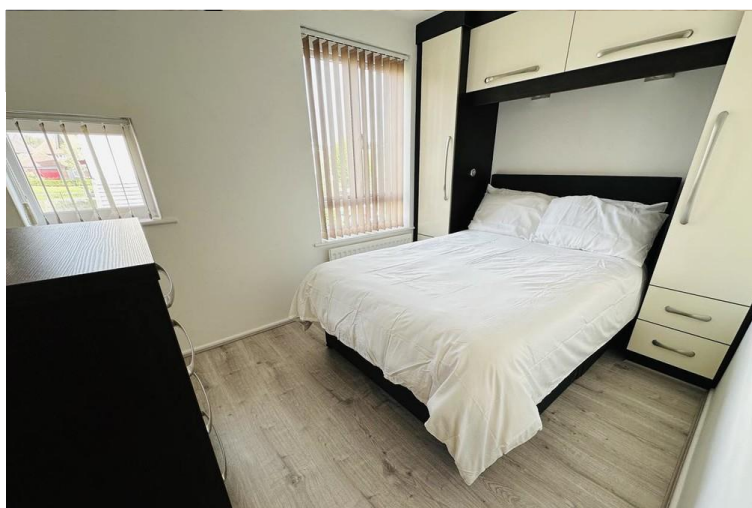
Buckshaw Village, Chorley, PR7 7DB

A perfect first step onto the property ladder with your own front door, offering a great alternative to an apartment. This fabulous, upgraded, one bedroom duplex has great open plan living space with contemporary refitted kitchen with integrated appliances. Vaulted ceiling. one double bedroom with f...

Asking Price Of £89,995

EPC Rating '74'





Property Description

HALLWAY

Front door leading to entrance hallway with doors to bedroom and shower room. Ceiling light point, radiator and stairs to first floor.

BEDROOM

8' 0" x 10' 8" (2.44m x 3.27m) Good size double with double glazed window to front, ceiling light point, radiator and door to hallway. Fitted wardrobes

SHOWER ROOM

Recently refitted enclosed single shower cubicle, utility cupboard with plumbing for washing machine, low level WC and wash hand basin with vanity unit and illuminated mirror. Vinyl flooring, ceiling light point and radiator.

FIRST FLOOR

OPEN PLAN LIVING/KITCHEN

14' 11" x 14' 2" (4.55m x 4.32m) Fabulous size living space with vaulted ceilings, double glazed patio doors with Juliet



balcony and further double glazed window to front. The kitchen area has been beautifully upgraded to offer a contemporary kitchen with breakfast bar, fridge/freezer. A range of wall and base units in black gloss, single oven and electric hob. Ceiling light point and radiator.

The property has a monthly service charge that includes utility bill gas, electric and water, please ask the agent





Score	Energy rating	Current	Potential
92+	A		
81-91	B		
69-80	C	74 C	74 C
55-68	D		
39-54	E		
21-38	F		
1-20	G		

Redrose
15 Barnes Wallis Way
Buckshaw Village
Chorley
Lancs

www.redrosepm.co.uk
sales@redrose.co.uk
01772 456558

Agents Note: Whilst every care has been taken to prepare these sales particulars, they are for guidance purposes only. All measurements are approximate and are for general guidance purposes only and whilst every care has been taken to ensure their accuracy, they should not be relied upon and potential buyers are advised to recheck the measurements