



redrose

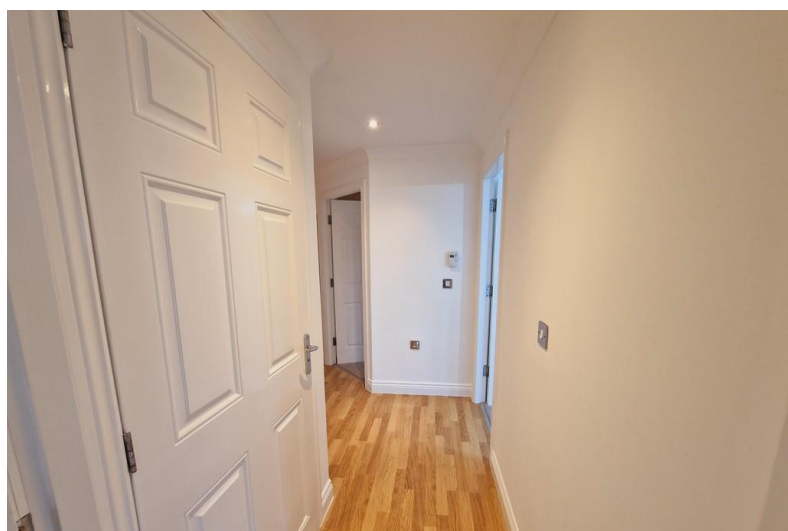
68 Main Street

Buckshaw Village, Chorley, PR7 7AQ

Mid floor 2 bedroom apartment with open plan living space. Perfect for an investment or an ideal first time buy. Currently tenanted at £725pcm. The open plan living overlooks the lovely landscaped gardens to the front with Juliet balcony. NO CHAIN.

Asking Price Of £110,000

EPC Rating '80'





Property Description

OUTSIDE

Accessed via communal secure entrance door with allocated parking.

HALLWAY

Spacious entrance hallway with panelled door leading to all rooms and two useful storage cupboards. Wall mounted electric heater and ceiling light point.

LOUNGE/KITCHEN

10' 2" x 18' 8" (3.1m x 5.7m) (3.1m x 5.7m) Open plan kitchen/living area with patio doors leading to communal gardens to the front. The kitchen has a range of wall and base units in light beech with space for washing machine and fridge/freezer, stainless steel sink and drainer, contrasting worktops, double glazed window to side and downlights.



MASTER BEDROOM

12' 5" x 8' 10" (3.8m x 2.7m) (3.8m x 2.7m) Double glazed window to front, fitted wardrobes, ceiling light point and wall mounted electric heater.

BEDROOM TWO

10' 1" x 8' 8" (3.09m x 2.65m) (3.09m x 2.65m) Double glazed window to front, ceiling light point and wall mounted electric heater.

BATHROOM

6' 10" x 5' 6" (2.1m x 1.7m) (2.1m x 1.7m) Three piece bathroom suite with bath and shower over, low level WC and wash hand basin. Heated chrome towel rail, vinyl flooring and downlights.





Score	Energy rating	Current	Potential
92+	A		
81-91	B		86 B
69-80	C	80 C	
55-68	D		
39-54	E		
21-38	F		
1-20	G		

Redrose
15 Barnes Wallis Way
Buckshaw Village
Chorley
Lancs

www.redrosepm.co.uk
sales@redrose.co.uk
01772 456558

Agents Note: Whilst every care has been taken to prepare these sales particulars, they are for guidance purposes only. All measurements are approximate and are for general guidance purposes only and whilst every care has been taken to ensure their accuracy, they should not be relied upon and potential buyers are advised to recheck the measurements