



redrose

Denham Wood Close
Chorley, PR7 2WH

Ground floor 2 bedroom apartment with great open plan living space, allocated parking and communal gardens to the rear, This is a perfect first time buyer property or an ideal investment. Great location with easy access to Chorley town centre and all local amenities. Offered for sale with NO CHAIN

Asking Price Of £113,000
EPC Rating 'TBC'





Property Description

ENTRANCE HALLWAY

5' 9" x 13' 3" (1.76m x 4.05m) Laminate flooring, ceiling light point and doors to all rooms.

LOUNGE/KITCHEN

11' 9" x 21' 7" (3.59m x 6.59m) Fabulous, open plan living/kitchen with double glazed windows to front and side. Laminate flooring, ceiling light point and wall mounted heaters. The kitchen has a range of wall and base units in light beech with oven and hob, stainless steel sink and drainer, integrated fridge freezer and space for washing machine.

BEDROOM ONE

9' 7" x 12' 3" (2.94m x 3.74m) Good size double bedroom with double glazed window to rear, ceiling light point, wall mounted heater and door to hallway.

BEDROOM TWO

10' 4" x 9' 2" (3.17m x 2.81m) Double glazed window to rear, ceiling light point and wall mounted heater.



BATHROOM

5' 9" x 8' 3" (1.76m x 2.54m) Three piece bathroom suite with bath, low level WC and wash hand basin. Vinyl flooring and heated towel rail. Double glazed window to rear.

PARKING

Allocated parking to the front.

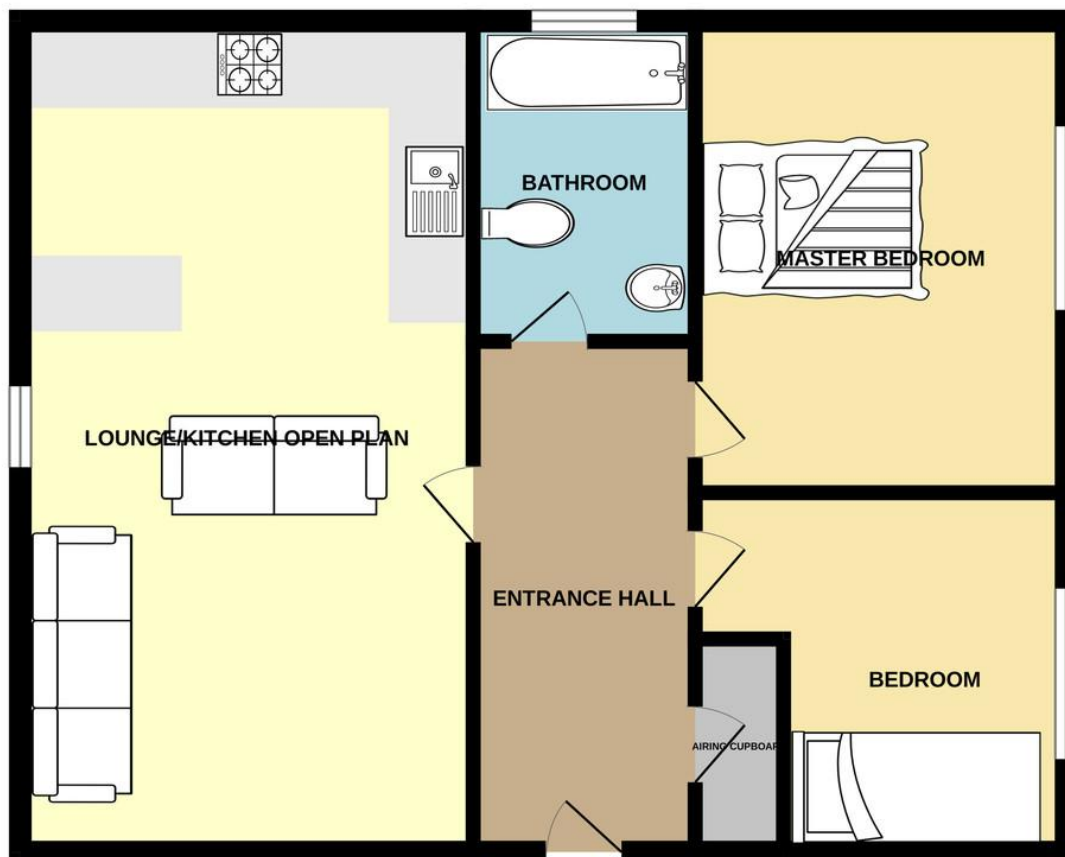
Leasehold 997 years remaining

Ground rent £150pa

Service charge £1200pa



GROUND FLOOR
588 sq.ft. (54.6 sq.m.) approx.



%epcGraph_c_1_378%