



**redrose**

**8 Chandlers Close**

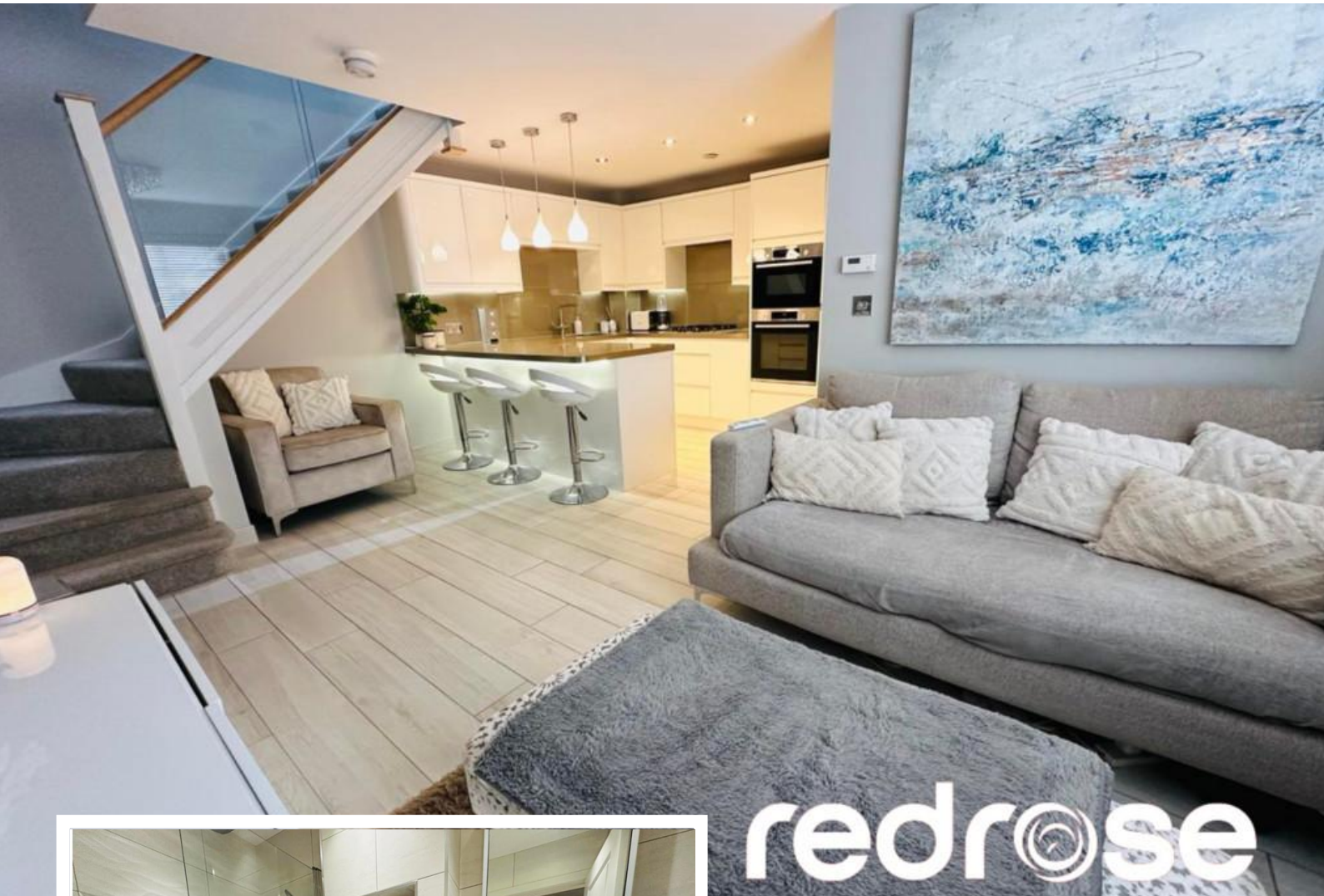
Buckshaw Village, Chorley, PR7 7DY

Absolutely stunning, upgraded and beautifully presented home. Perfect for any first-time buyer with high quality fixtures throughout. Beautifully thought-out open plan living and two great size bedrooms both with fitted wardrobes. The bathroom and cloakroom are refitted with top quality Villeroy and Bosch suites and make this lovely home have a real quality feel. Allocated and visitor parking to the front.

**£165,000**

EPC Rating 'TBC'





redrose

## Property Description

### OUTSIDE FRONT

Set in a cul de sac with allocated parking to the front, established shrubbery and pathway leading to wooden front door.

### HALLWAY

hallway with panelled door leading to lounge and further door to WC. radiator and light fitting.

### CLOAKROOM

Upgraded Villeroy and Bosch WC and wash hand basin, tiled flooring, light fitting and radiator.

### LOUNGE/KITCHEN OPEN PLAN

16' 7" x 16' 7" (5.07m x 5.06m) Stunning open plan with contemporary, high quality white gloss kitchen wall and base units and breakfast bar with high quality tops and concealed lighting under. Chrome sockets and switches, integrated washing machine, dishwasher, double oven and fridge freezer. gas hob and extractor. Open plan leading to good sized lounge with double glazed window to front,



redrose



redrose



light fitting and radiator. Stairs leading to first floor with glass balustrade. A really lovely room. .

#### FIRST FLOOR

Stairs leading to landing, ceiling light point and doors leading to all first floor rooms.

#### MASTER BEDROOM

12' 5" x 8' 2" (3.8m x 2.5m) Double glazed window to front, fitted mirrored wardrobes, ceiling light point and radiator.

#### BEDROOM TWO

7' 2" x 7' 6" (2.2m x 2.3m) Double glazed window to front, ceiling light point, fitted wardrobes and drawers and radiator.

#### BATHROOM

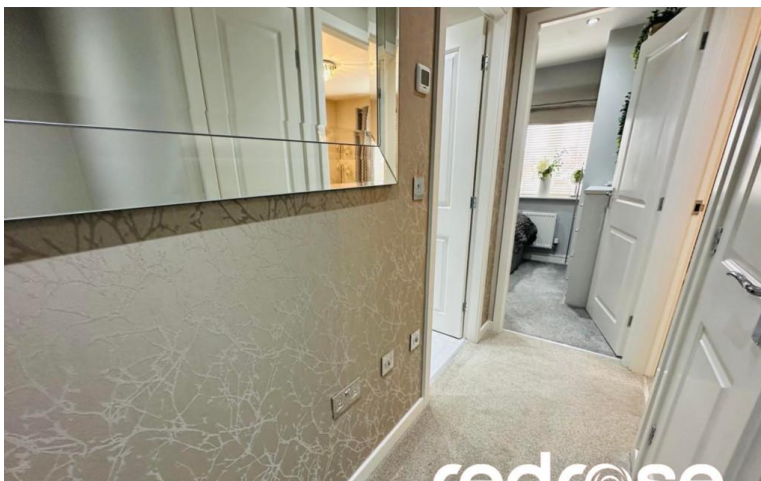
8' 2" x 4' 3" (2.5m x 1.3m) Stunning refitted Villeroy and Bosch bathroom fully tiled in contemporary grey with low level WC, wash hand basin with vanity unit and bath with shower over and glass screen. Heated towel rail and downlights.

#### MORTGAGE

If you would like a Free Mortgage Consultation our Financial Adviser will be able to meet with you discuss your requirements and to assess your mortgage capability. You will receive professional and independent mortgage advice along with any other associated services.

#### BUCKSHAW VILLAGE

Buckshaw Village is perfectly situated for commuting to Preston, Manchester or Blackpool with the M6, M61 and M55 motorways minutes away, The Buckshaw Village Parkway Train Station which gives links to Manchester Piccadilly, Victoria and Preston. Within walking distance is Tesco and Aldi, Home restaurant, coffee shops, barbers and various takeaways. The War Horse pub and Harvester just a small walk.. There is a Community Centre hosting many activities, Primary School, Doctors surgery and Dentist, the Buckshaw Hub which offers a nursery, children's swimming pool, hair salon and cafe.



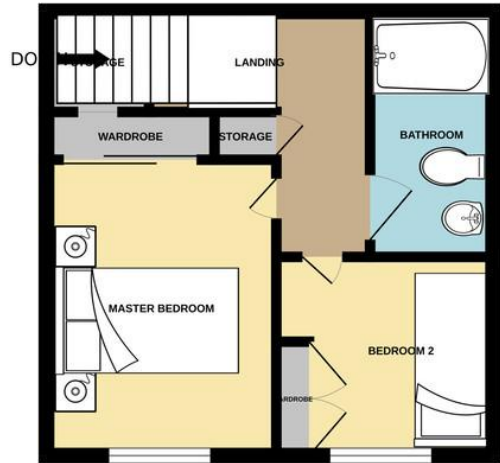




GROUND FLOOR



1ST FLOOR



Whilst every attempt has been made to ensure the accuracy of the floorplan contained here, measurements of doors, windows, rooms and any other items are approximate and no responsibility is taken for any error, omission or mis-statement. This plan is for illustrative purposes only and should be used as such by any prospective purchaser. The services, systems and appliances shown have not been tested and no guarantee as to their operability or efficiency can be given.  
Made with Metropix ©2024

%epcGraph\_c\_1\_378%

Redrose  
15 Barnes Wallis Way  
Buckshaw Village  
Chorley  
Lancs

www.redrosepm.co.uk  
sales@redrose.co.uk  
01772 456558

Agents Note: Whilst every care has been taken to prepare these sales particulars, they are for guidance purposes only. All measurements are approximate and for general guidance purposes only and whilst every care has been taken to ensure their accuracy, they should not be relied upon and potential buyers are advised to recheck the measurements