



redrose

6 Cornwall Avenue

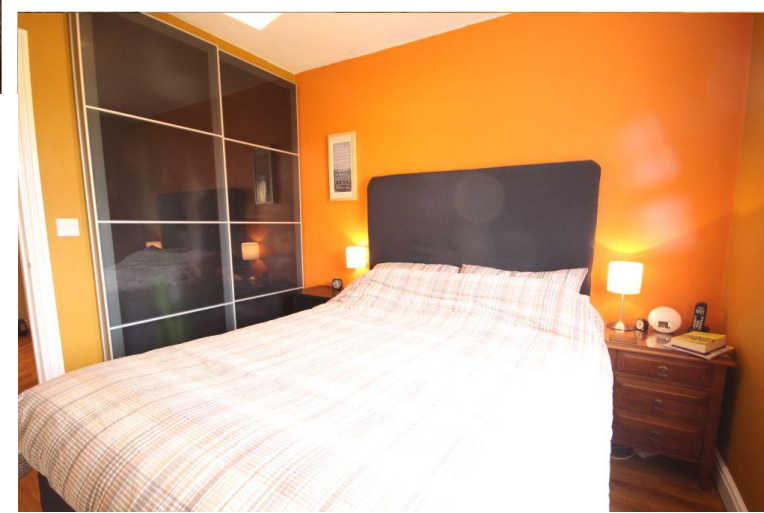
Buckshaw Village, Chorley, PR7 7BG

TOP FLOOR TWO BEDROOM APARTMENT. This stunning top floor apartment has 'karndean' flooring throughout. Open plan kitchen / lounge with appliances. Lovely bathroom, spacious entrance hallway with storage cupboard. Close to one of the nicest landscaped park areas on the village this really is a sma...

Asking Price Of £115,000

EPC Rating '74'





Property Description

Communal Hallway

Secure entrance door to communal block. Stairs to all floors.

Hallway

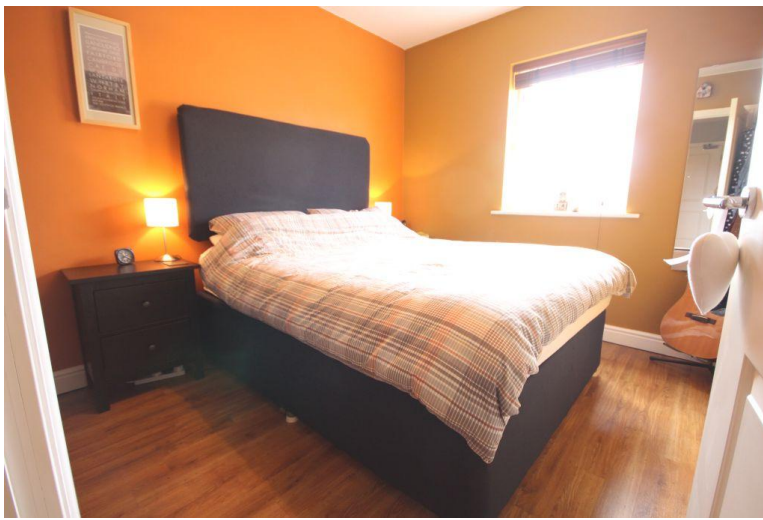
A nice spacious hallway, white wood entrance door, door to two large storage cupboards and water tank, doors to connecting rooms. Wall mounted electric heater, ceiling light points and 'Karndean' light oak flooring.

Lounge Open Plan

3.75 x 3.24 Double glazed windows to front and side elevation. Wall mounted electric heater and TV point. Door to hallway and ceiling light point. Light oak 'Karndean' flooring and open plan leading through to;

Kitchen Open Plan

3.24 x 2.58 Smart fitted kitchen with a good range of wall and base units in white and contrasting slate grey. Dark work tops with up stands give a quality finish to this modern kitchen. Electric single oven with ceramic hob and



extractor over. Integrated fridge/freezer and washer / dryer. Stainless steel sink unit with drainer. Light oak 'Karndean' flooring and downlights.

Bedroom One

2.8 x 2.7 Double glazed window to front, fitted wardrobes, electric wall heater, light fitting and light oak 'karndean' flooring.

Bedroom Two

2.8 x 1.9 Double glazed window to front, electric wall heater, light fitting, hatch to loft space and light oak 'karndean' flooring.



Bathroom

1.9 x 2.1 Light oak Karndean flooring, bath with fully tiled surround and electric shower over, WC, wash hand basin and downlights.

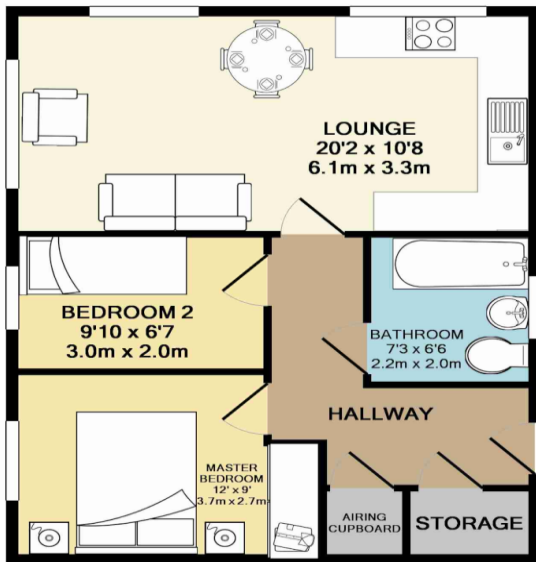
Parking

Allocated Parking to the rear of the property.

Mortgage

If you would like a Free Mortgage Consultation our Financial Adviser will be able to meet with you discuss your requirements and to assess your mortgage capability. You will receive professional and independent mortgage advice along with any other associated services.





Whilst every attempt has been made to ensure the accuracy of the floor plan contained here, measurements of doors, windows, rooms and any other items are approximate and no responsibility is taken for any error, omission, or mis-statement. This plan is for illustrative purposes only and should be used as such by any prospective purchaser. The services, systems and appliances shown have not been tested and no guarantee as to their operability or efficiency can be given
 Made with Metropix ©2015

Score	Energy rating	Current	Potential
92+	A		
81-91	B		
69-80	C	74 C	74 C
55-68	D		
39-54	E		
21-38	F		
1-20	G		

Redrose
 15 Barnes Wallis Way
 Buckshaw Village
 Chorley
 Lancs

www.redrosepm.co.uk
sales@redrose.co.uk
 01772 456558

Agents Note: Whilst every care has been taken to prepare these sales particulars, they are for guidance purposes only. All measurements are approximate and for general guidance purposes only and whilst every care has been taken to ensure their accuracy, they should not be relied upon and potential buyers are advised to recheck the measurements