



**redrose**

**20 Spinners Court**

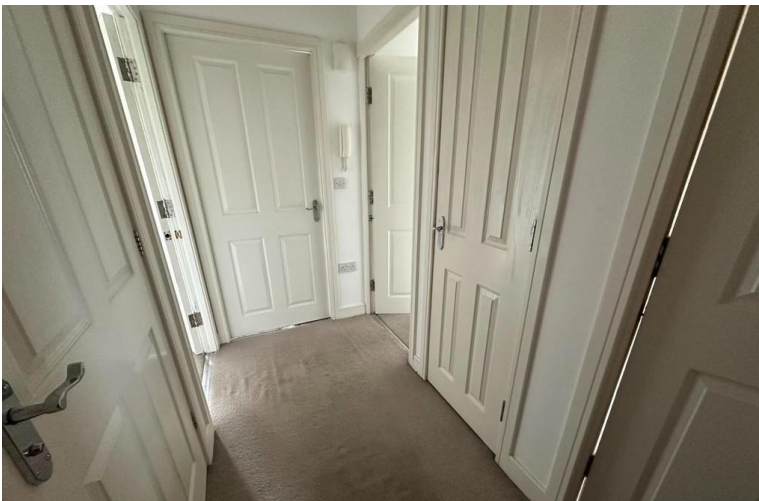
Buckshaw Village, Chorley, PR7 7AU

This lovely bright and airy two bedroomed second floor apartment on Buckshaw Village comprises of a larger than average kitchen diner, good sized lounge overlooking the landscaped gardens. One double bedroom and one single bedroom and bathroom. The apartment block has secure access and there is an a...

**Asking Price Of £115,000**

EPC Rating '76'





## Property Description

### OUTSIDE

Allocated parking space, secure entry system

### HALLWAY

2.8 x 1.2 Wooden front door, door to airing cupboard, hatch to loft, doors to remaining rooms

### KITCHEN/DINER

4.1 x 4.0 Great sized Kitchen/diner, range of base and wall units in light oak, electric hob, single oven, double glazed window to rear, space and plumbing for washing machine, laminate flooring, light fitting, extractor, electric heater

### LOUNGE

4.6 x 3.5 Lovely bright lounge with the benefit of double glazed window and further full length double glazed window overlooking the landscaped area, light fitting, electric heater

### BEDROOM ONE

4.3 x 2.5 Double glazed window, electric panel heater,



ceiling light

#### BEDROOM TWO

3.2 x 1.8 Double glazed window, electric panel heater, ceiling light

#### BATHROOM

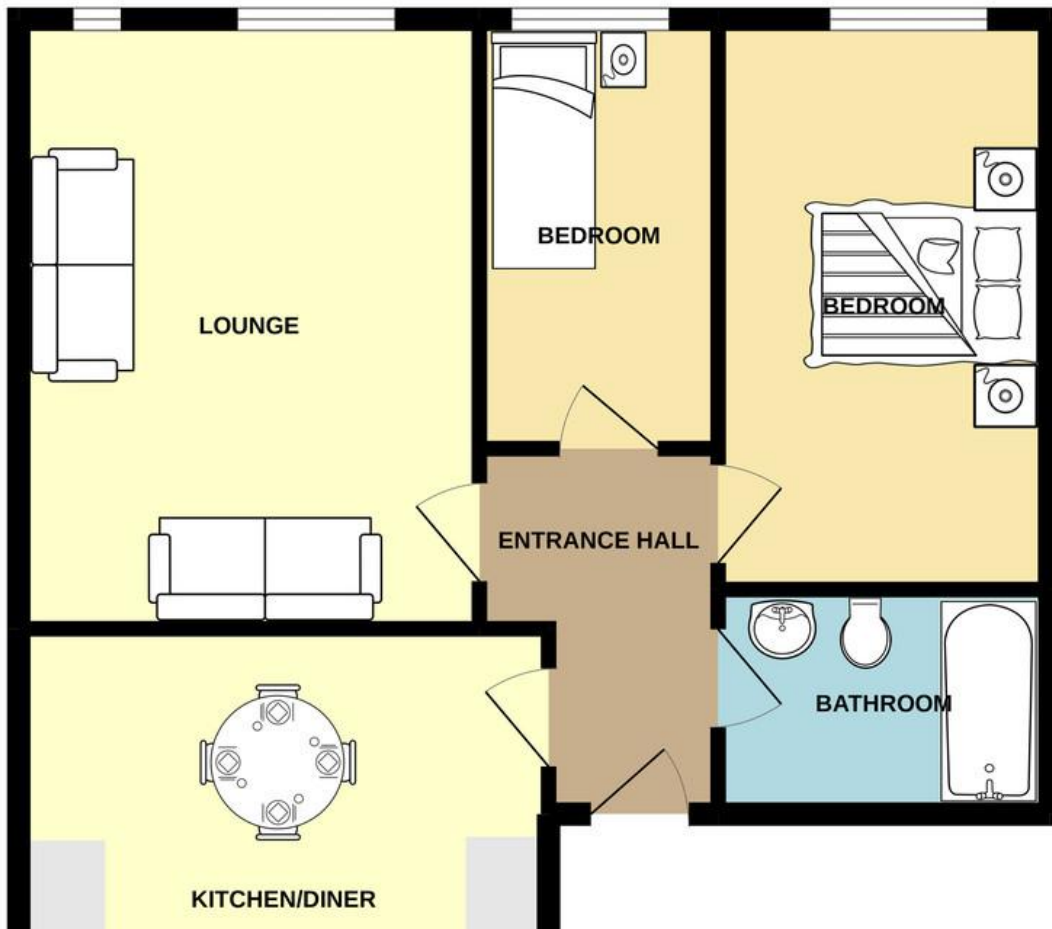
Good sized bathroom, white bath and shower over, glass shower screen, wc, wash hand basin, vinyl flooring







GROUND FLOOR  
636 sq.ft. (59.1 sq.m.) approx.



Energy Efficiency Rating		
	Current	Potential
Very energy efficient - lower running costs		
(92-100) <b>A</b>		
(81-91) <b>B</b>		83
(69-80) <b>C</b>	76	
(55-68) <b>D</b>		
(39-54) <b>E</b>		
(21-38) <b>F</b>		

Redrose  
15 Barnes Wallis Way  
Buckshaw Village  
Chorley  
Lancs

www.redrosepm.co.uk  
sales@redrose.co.uk  
01772 456558

Agents Note: Whilst every care has been taken to prepare these sales particulars, they are for guidance purposes only. All measurements are approximate and for general guidance purposes only and whilst every care has been taken to ensure their accuracy, they should not be relied upon and potential buyers are advised to recheck the measurements