



redrose

41 Perthshire Grove

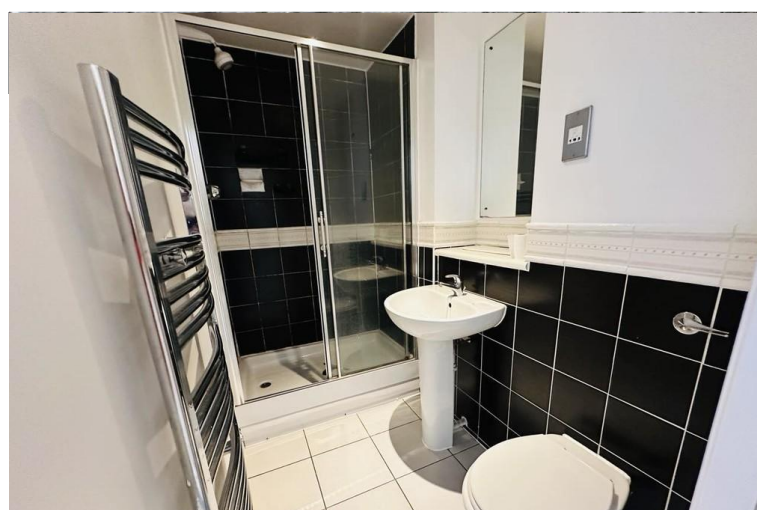
Buckshaw Village, Chorley, PR7 7AE

GROUND FLOOR 2 bedroom apartment, larger than average with separate kitchen, 2 double bedrooms with en suite to the master, great size lounge with patio doors onto communal gardens and patio area. offered for sale with no onward chain. This is a perfect downsize property or ideal first step onto the property ladder...

Asking Price Of £125,000

EPC Rating '76'





Property Description

COMMUNAL GARDENS

Lovely landscaped communal gardens with established borders and manicured lawns. Patio area leading from the apartment

COMMUNAL ENTRANCE

The property is accessed via communal doorway with security entry system. The apartment is located on the top floor. [Edit](#) | [Delete](#)

ENTRANCE HALLWAY

Solid wooden front door leading to entrance hallway with laminate flooring, ceiling light point, wall mounted heater and solid wood doors leading to all rooms and storage cupboard.

LOUNGE/DINER

5.21 x 3.66 Great size lounge with feature fireplace and electric fire insert. Laminate flooring, ceiling light point and double glazed patio doors to communal gardens and patio.



KITCHEN/BREAKFAST ROOM

3.28 x 3.13 Large kitchen/breakfast room with a range of wall and base units in beech. Tiled flooring, downlights, integrated washer/dryer, integrated fridge/freezer, integrated dishwasher, single electric oven, 4 ring electric hob with extractor fan over and double glazed window to rear.

MASTER BEDROOM

4.38 x 4.07 Large master bedroom with double glazed window to rear. Ceiling light point, radiator and solid wood door leading to en-suite shower room. A range of fitted wardrobes and matching drawers.



EN-SUITE

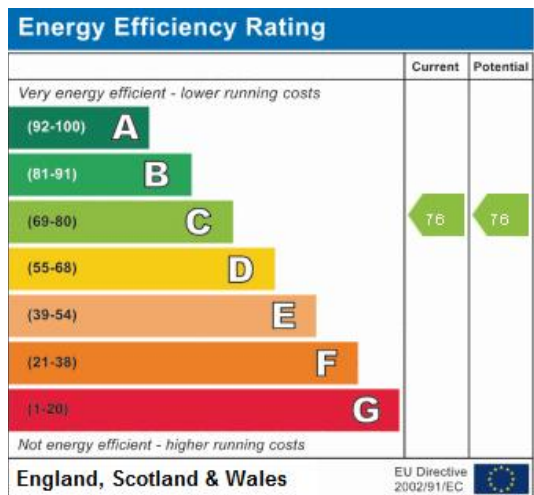
Three piece bathroom suite with double fully tiled shower cubicle, WC, wash hand basin, tiled flooring and downlights. [Edit](#) | [Delete](#)

BEDROOM TWO

4.39 x 3.18 Another good size double with double glazed window to front, electric wall heater and ceiling light point. BATHROOM

Three piece bathroom suite with bath, WC and wash hand basin. Tiled flooring, downlights and extractor fan.





Address:

41 The Pines Grove Buckshaw Village Chorley, PR7 7AE

Redrose
15 Barnes Wallis Way
Buckshaw Village
Chorley
Lancs

www.redrosepm.co.uk
sales@redrose.co.uk
01772 456558

Agents Note: Whilst every care has been taken to prepare these sales particulars, they are for guidance purposes only. All measurements are approximate and are for general guidance purposes only and whilst every care has been taken to ensure their accuracy, they should not be relied upon and potential buyers are advised to recheck the measurements