



**redrose**

**Preston Road**

Clayton-le-woods, Chorley, PR6 7EB

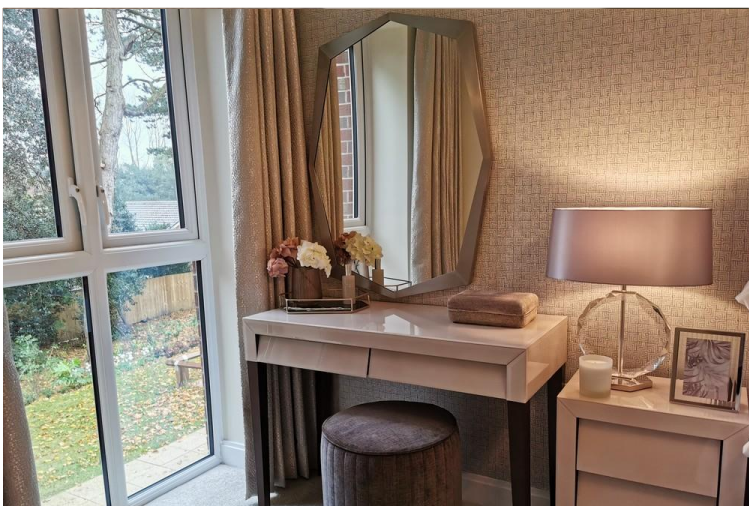
- NEW BUILD
- OVER 60 RETIREMENT LIVING
- LOVELY LOCATION
- DEDICATED HOUSE MANAGER

**£1,100 pcm**

EPC Rating 'TBC'







## Property Description

This age exclusive development will be comprised of 23 one bed and 18 two bed apartments. As with every McCarthy & Stone development, a close-knit community feel is encouraged with sociable communal spaces and a limited number of apartments, so that homeowners can get to know their neighbours. Safety and security will be ensured throughout the building, which will benefit from an on-site House Manager, as well as a camera entry system and intruder alarms in all apartments. Our 24 hour call system gives you complete peace of mind.

Every apartment will include a fully fitted kitchen, telephone and television connection points in the living room and main bedroom and double glazing for energy efficiency. Selected apartments will also feature walk-in wardrobes and walk out balconies for added luxury. You will also enjoy unlimited access to the landscaped gardens and beautiful Lounge which is fully wifi enabled. You'll also benefit from on-site car parking, a cycle/scooter store and lift access



- Exclusive development
- Walk out balconies to selected apartments
- Close to local amenities
- Views to the open countryside
- Private gated development
- Car parking available



- Lift to All Floors
- Intruder alarm
- Camera entry system
- House Manager
- Guest suite
- Homeowners' lounge
- Mobility scooter room
- Landscaped gardens



%epcGraph\_c\_1\_325%

Redrose  
15 Barnes Wallis Way  
Buckshaw Village  
Chorley  
Lancs

[www.redrosepm.co.uk](http://www.redrosepm.co.uk)  
[lettings@redrosepm.co.uk](mailto:lettings@redrosepm.co.uk)  
01772 456558

Agents Note: Whilst every care has been taken to prepare these sales particulars, they are for guidance purposes only. All measurements are approximate are for general guidance purposes only and whilst every care has been taken to ensure their accuracy, they should not be relied upon and potential buyers are advised to recheck the measurements