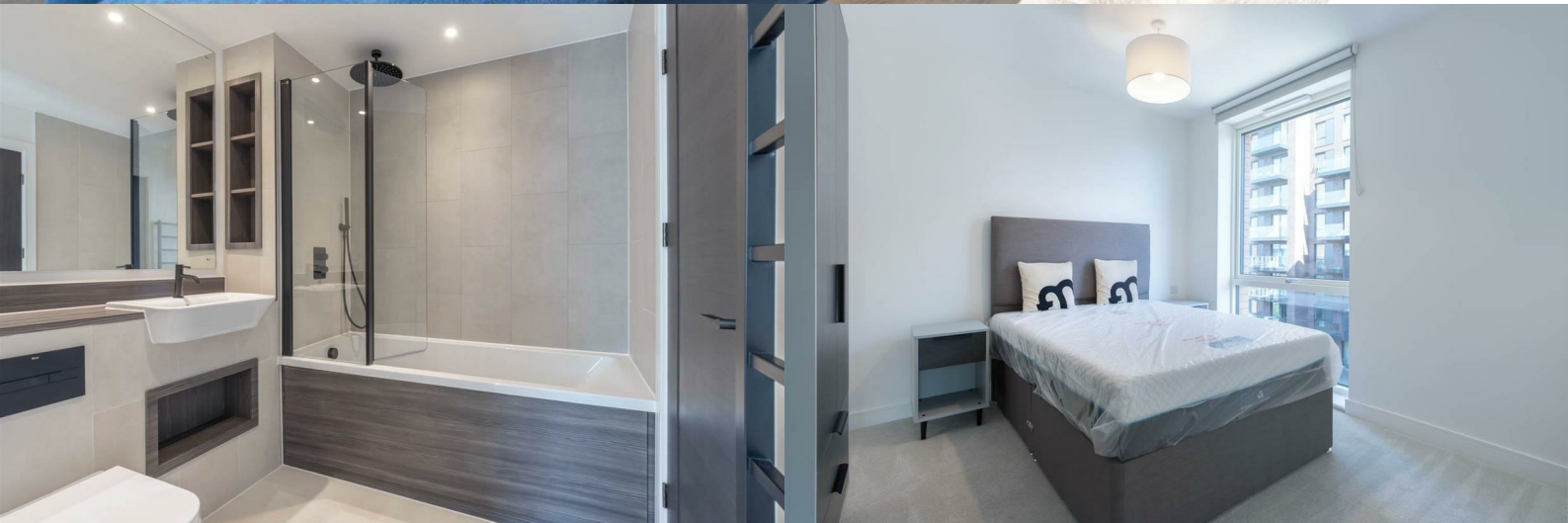




**BUY
ME**



The Colmore, B4 6LS
GUN QUARTER

£375,000

- Luxury two-bedroom apartment
- Large balcony and terrace over the canal
- Superior facilities for residents including gym, sauna, steam room, cinema and resident lounge
- Stunning, landscaped podium gardens with canal views
- Unbeatable central location near Snow Hill & New Street stations, Colmore Row, and Birmingham Children's Hospital.
- Two bathrooms with luxury fittings
- 24 hour concierge and security
- Triple glazing and central heating systems
- 0.2 miles from Birmingham Children's Hospital
- Award-Winning Development by St Joseph (Berkeley Group) with luxury amenities and tranquil canal-side surroundings.

2

2

1

fleetmilne.co.uk

0121 366 0456

FleetMilne