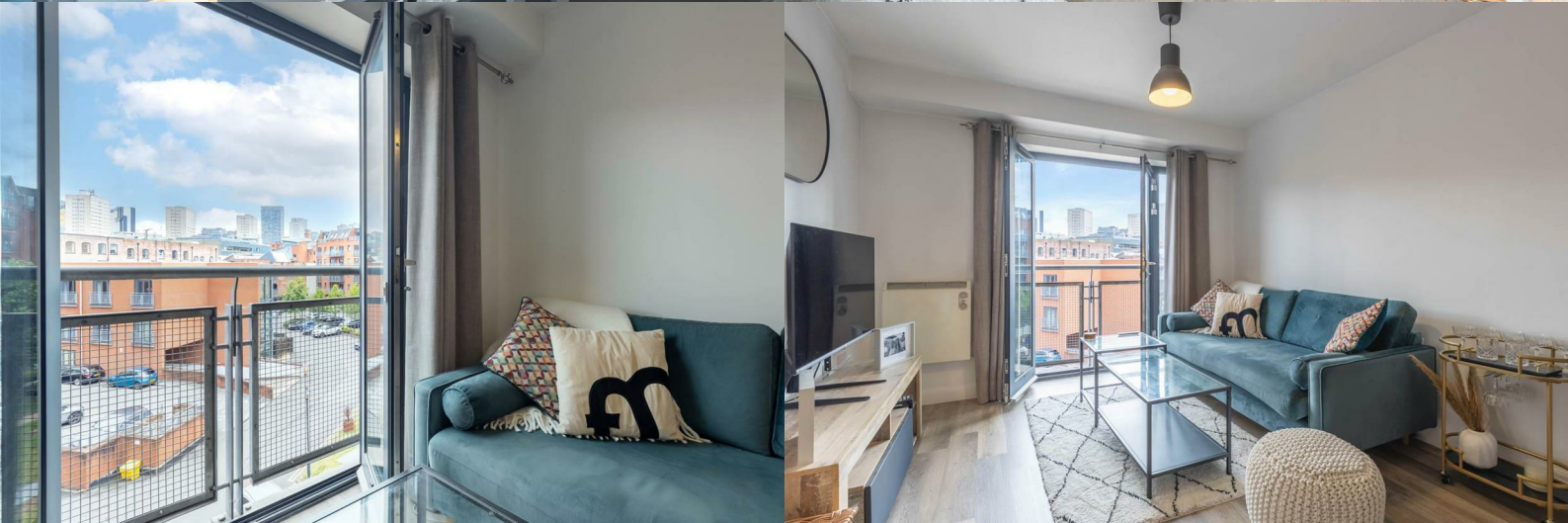




**BUY
ME**



Newhall Court, B3 1DR
JEWELLERY QUARTER

£220,000

- | | |
|---|--|
| <ul style="list-style-type: none"> • Two double bedrooms • Secure and allocated parking • Recently refreshed and refurbished • Potential gross yield of 7.1% (speak to the team for more info) • 0.2 miles from St. Pauls Square | <ul style="list-style-type: none"> • Two bathrooms; one ensuite shower room and one main bathroom • Fantastic city views • Long lease (approx. 976 years remaining) and low ground rent (£50pa) • Jewellery Quarter location • 0.5 miles from Colmore Row |
|---|--|

2

2

1