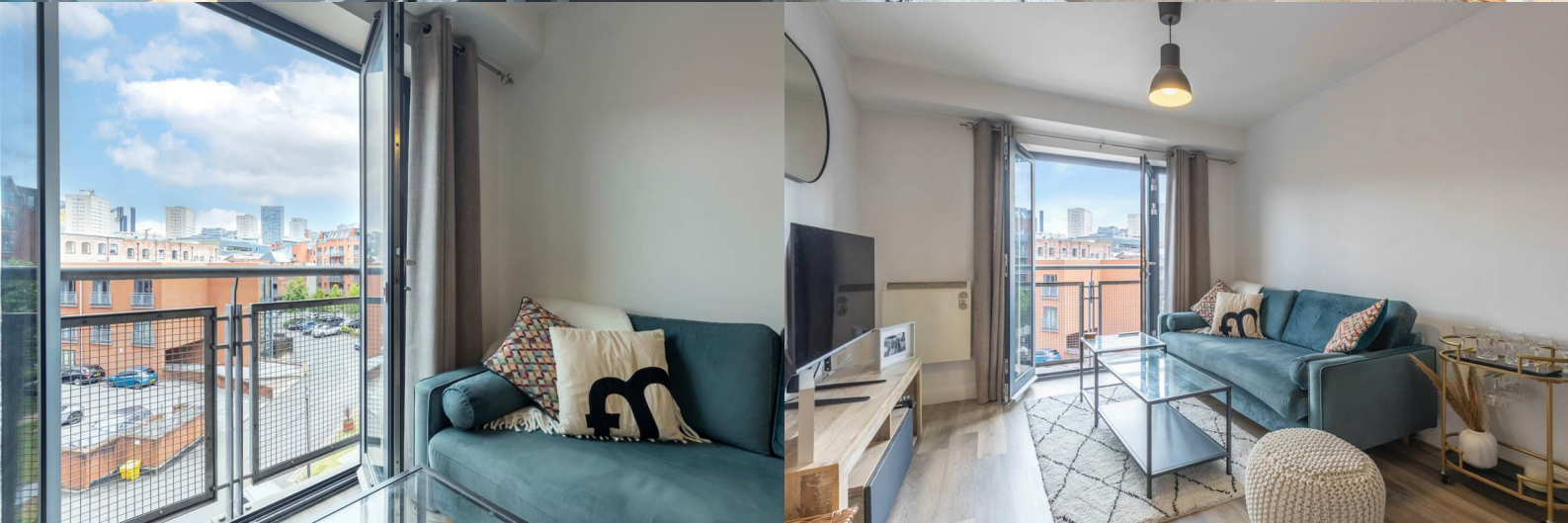




**BUY
ME**



Newhall Court, B3 1DR

£242,500

JEWELLERY QUARTER

- Two double bedrooms
- Secure and allocated parking
- Recently refreshed and refurbished
- Potential gross yield of 6.6% (speak to the team for more info)
- 0.2 miles from St. Pauls Square
- Two bathrooms; one ensuite shower room and one main bathroom
- Fantastic city views
- Long lease (approx. 976 years remaining) and low ground rent (£50pa)
- Jewellery Quarter location
- 0.5 miles from Colmore Row



fleetmilne.co.uk

0121 366 0456

FleetMilne