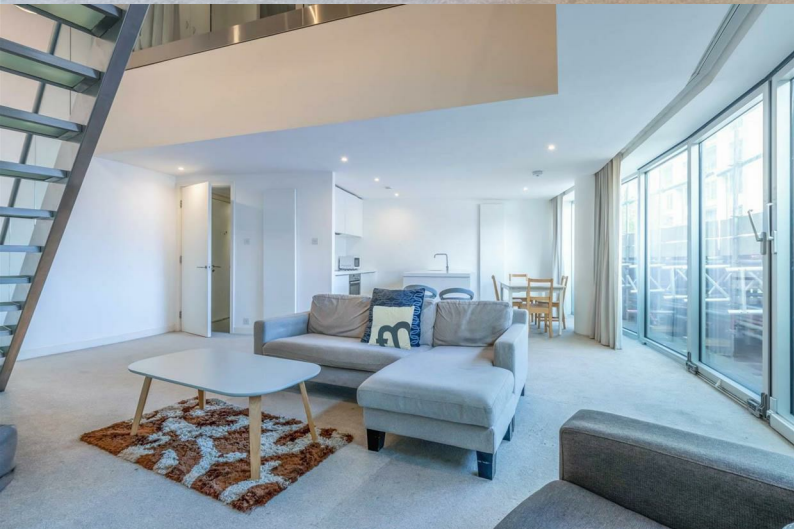




**BUY
ME**



Rotunda, B2 4PA

£235,000

CITY CORE

- Two double bedrooms
- ****Large private terrace****
- 0.1 miles from New Street station
- Ground rent - £474.81
- Lease length - approx. 227 years remaining

- Two modern pristine bathrooms
- City centre location
- Offered full furnished - turn key investment
- Service charge - £2,053 quarterly
- Can be sold with tenant in situ until September 2025

2 

2 

0 

fleetmilne.co.uk

0121 366 0456

FleetMilne