



Bridstow Place, W2

£1,300,000

Dexters





## Bridstow Place, London, W2

A unique opportunity to buy a charming two bedroom, freehold cottage with a roof terrace in Bridstow Place, W2. This house has not been to the market since 1980, it is a very rare find as most properties in this location have

Bridstow Place is a picturesque street of Victorian cottages in the heart of Notting Hill, close to the amenities of Westbourne Grove & Portobello Road. Notting Hill Gate, Royal Oak and Bayswater are the closest underground stations.

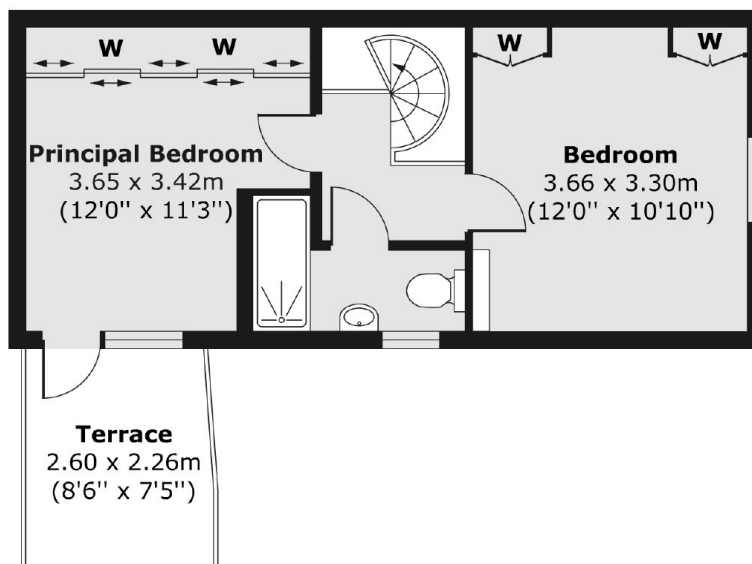
### Features

- Potential to Modernise
- Roof Terrace
- Freehold
- Rare Find
- Victorian Cottage
- Exceptional Location

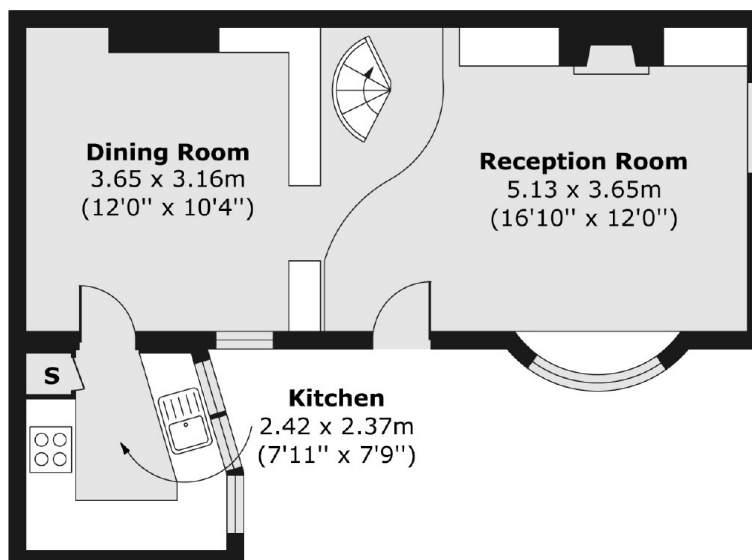


# Bridstow Place, London, W2

First Floor



Ground Floor



Total area (approx.) 69.26 sq. m (746 sq. ft)  
Terrace area (approx.) 5.77 sq. m (62 sq. ft)