



Kensington High Street, W14

£699,995

This apartment comprises of two double bedrooms both with generous storage, separate fitted kitchen, spacious reception room and bathroom. The building also benefits from a porter.

Kenton Court is ideally located moments to Kensington Olympia (Overground and District lines) as well as the amenities and restaurants of Kensington High Street. The open spaces of Holland Park are also close by.

Features

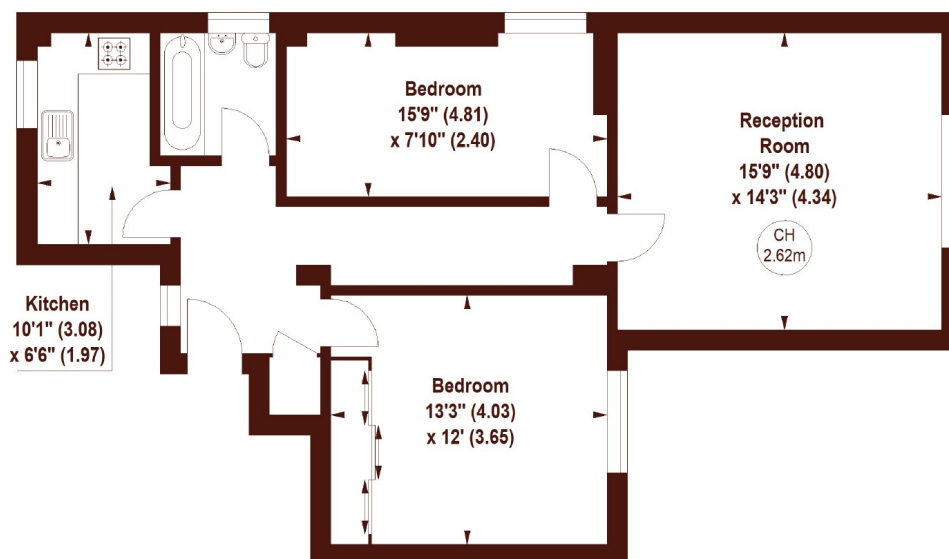
- Two Bedroom
- Portered Block
- Separate Kitchen
- Ample Storage
- Kensington

Kensington High Street,
London, W14

**Kenton Court,
Kensington High Street, W14**

APPROX. GROSS INTERNAL FLOOR AREA 747 SQFT / 69.40 SQM

Key :
CH - Ceiling Height



Not to scale, for guidance only and must not be relied upon as a statement of fact.
All measurements and areas are approximate only

Dexters

Westbourne Grove
120 Westbourne Grove
London
W11 2RR
Sales
020 7313 3600

Energy Rating: C. We aim to make our particulars both accurate and reliable. However they are not guaranteed; nor do they form part of an offer or contract. If you require clarification on any points then please contact us, especially if you're traveling some distance to view. Please note that appliances and heating systems have not been tested and therefore no warranties can be given as to their good working order.



[dexters.co.uk](https://www.dexters.co.uk)