



Monmouth Road, W2

£685,000

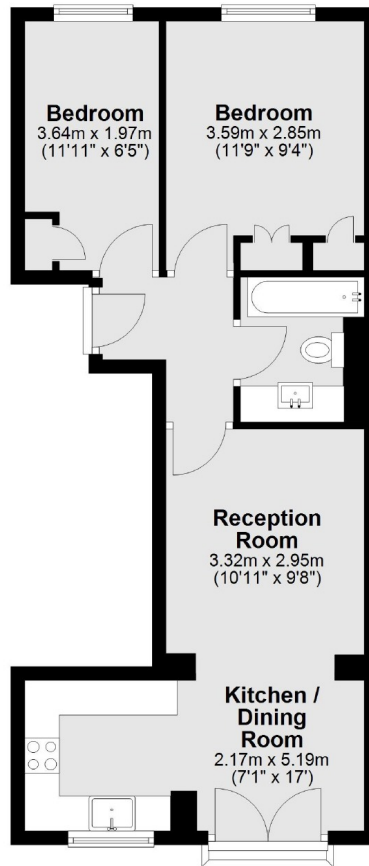
Set within a handsome Victorian terrace, this charming two bedroom apartment on the first floor has high ceilings throughout and french doors leading onto a Juliet balcony. The living space has a L shaped design leading onto a dining area and well appointed kitchen.

Monmouth Road provides easy access to the popular High Street and shopping facilities of Westbourne Grove as well as Portobello Road. Travel links include Bayswater, Notting Hill Gate Underground and easy reach of Paddington Station.

Features

Victorian Terrace
Two Bedrooms
First Floor
Juliet Balcony
Chain Free
Hyde Park

Monmouth Road,
London, W2



Total area: approx. 46.2 sq. metres (497.0 sq. feet)