



## Elsham Road, W14

£645,000

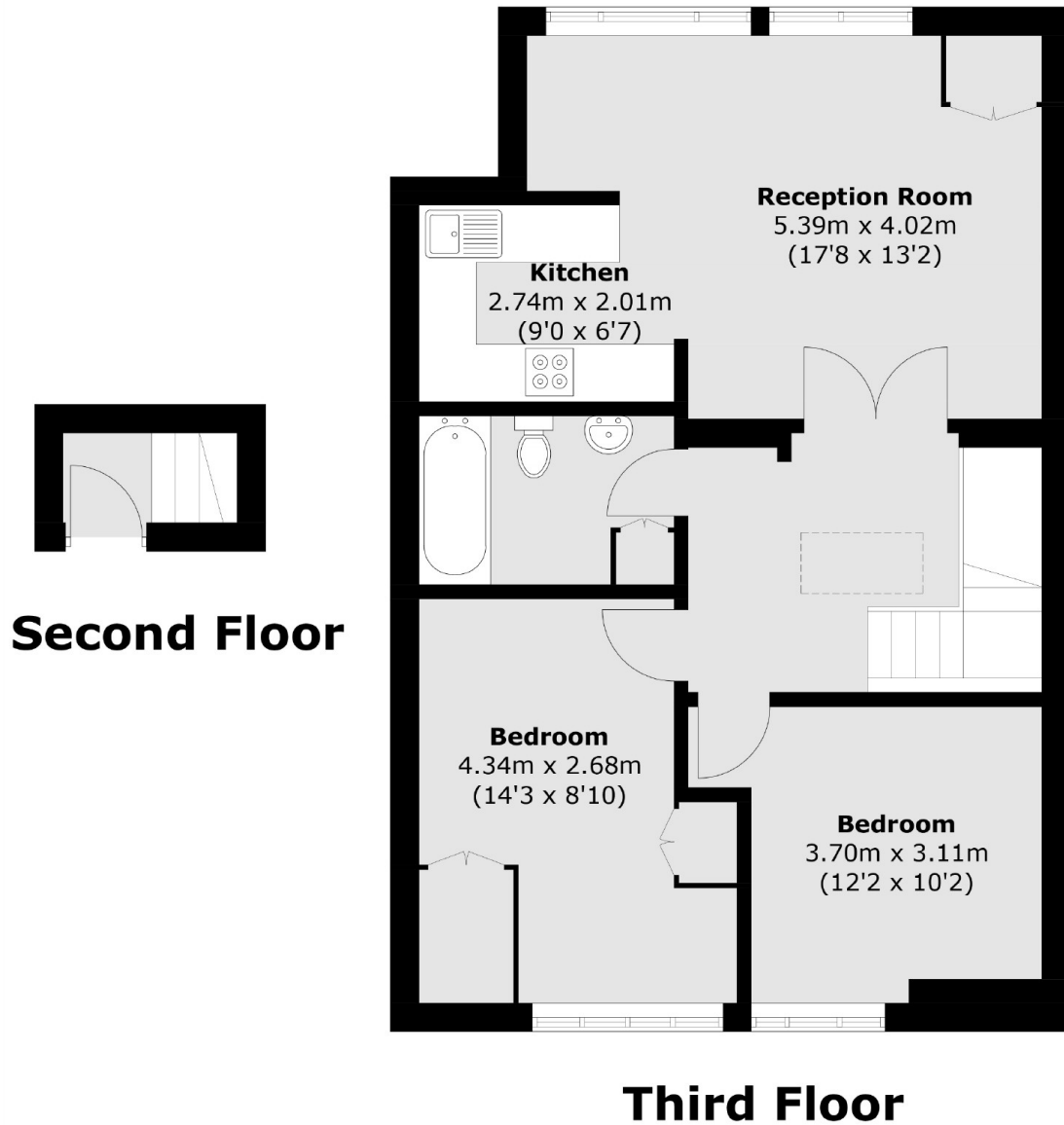
A two double bedroom flat for sale on the third floor of this well maintained Victorian conversion, with two double bedrooms, open plan reception and a fully integrated kitchen.

Elsham Road is popular tree lined street in the Royal Borough of Kensington and Chelsea and is conveniently located between Kensington Olympia, Kensington High Street and Shepherds Bush.

### Features

- Two Double Bedrooms
- Top Floor Victorian Conversion
- Open Plan Kitchen
- Good Storage
- Kensington & Chelsea
- Modern Throughout

Elsham Road,  
London, W14



Total area (approx.): 66.0 sq. m (710.5 sq. ft)