



Elsham Road, W14

£750,000

A two double bedroom flat for sale on the third floor of this well maintained Victorian conversion, with two double bedrooms, open plan reception and a fully integrated kitchen.

Elsham Road is popular tree lined street in the Royal Borough of Kensington and Chelsea and is conveniently located between Kensington Olympia, Kensington High Street and Shepherds Bush.

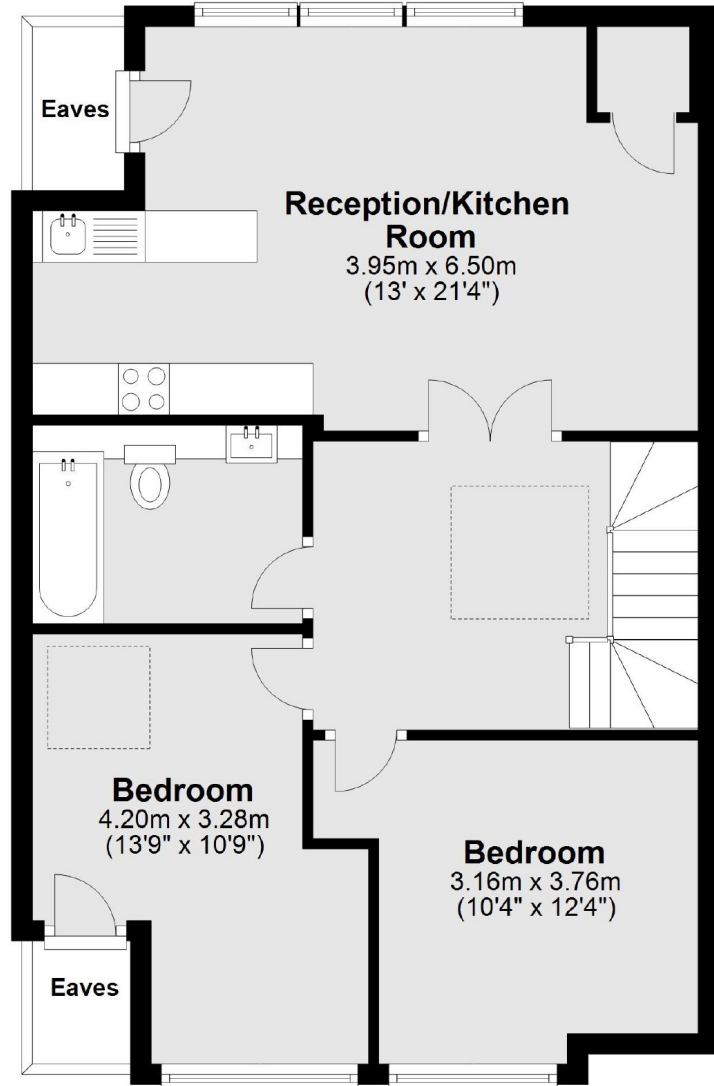
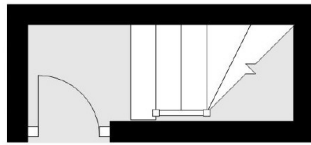
Features

- Two Double Bedrooms
- Top Floor Victorian Conversion
- Open Plan Kitchen
- Good Storage
- Kensington & Chelsea
- Modern Throughout

Elsham Road,
London, W14

Second Floor

First Floor



Total area: approx. 67.0 sq. metres (721 sq. feet)

Dexters

Westbourne Grove
120 Westbourne Grove
London
W11 2RR
Sales
020 7313 3600

Energy Rating: D. We aim to make our particulars both accurate and reliable. However they are not guaranteed; nor do they form part of an offer or contract. If you require clarification on any points then please contact us, especially if you're traveling some distance to view. Please note that appliances and heating systems have not been tested and therefore no warranties can be given as to their good working order.

 **RICS** Regulated
Estate Agent
and Letting Agent

dexters.co.uk