



Vicarage Gate, W8 £395,000

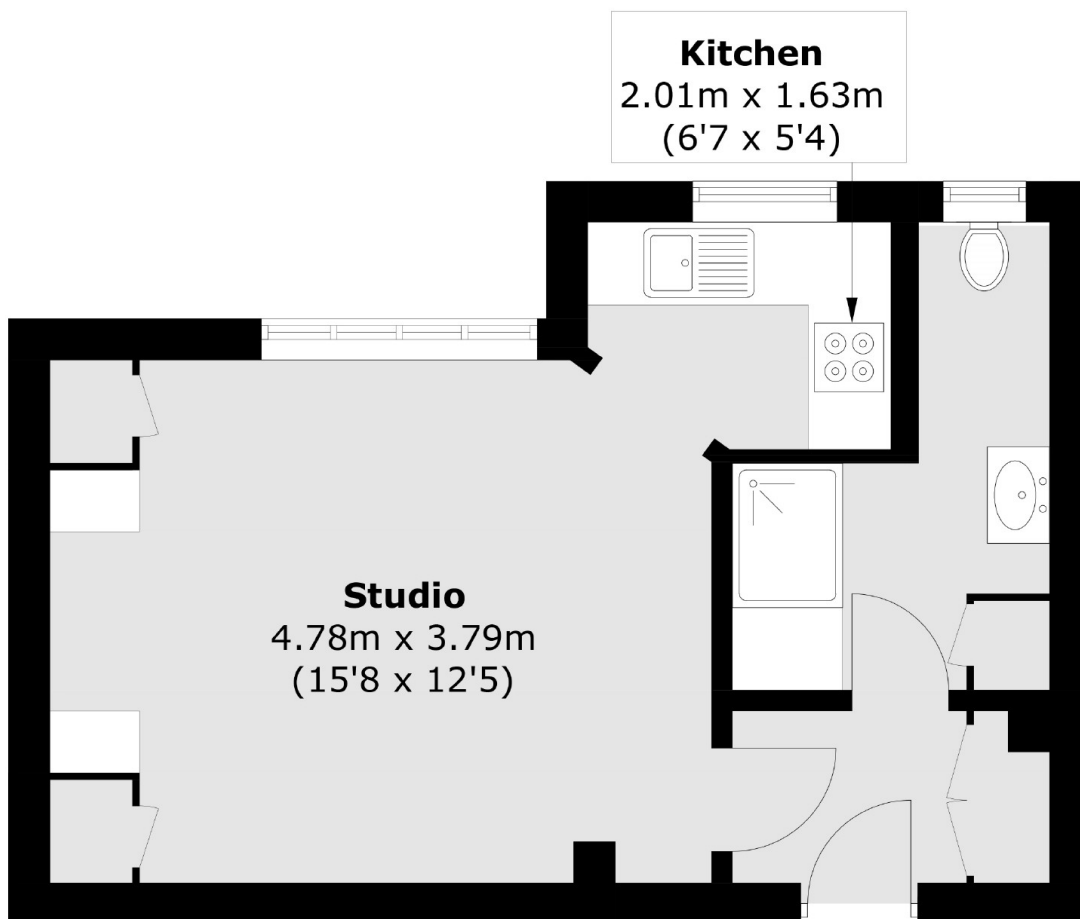
A well proportioned studio flat located in a portered Art-Deco mansion block in the heart of Kensington. The property will be for buy to let investors only with a tenant in situ. The flat is in great condition, with a set back modern kitchen and built in storage.

Vicarage Gate is a prime residential road in the heart of Kensington, a short walk to Kensington High Street, with plenty of chic shops and restaurants and Hyde Park and Kensington Gardens are close by.

Features

- Studio
- Investment Property
- Lift
- Concierge
- Wooden Flooring
- Kensington

Vicarage Gate,
London, W8



Fourth Floor

Total area (approx.): 31.0 sq. m (333.7 sq. ft)