



## Moscow Road, W2

£1,500,000

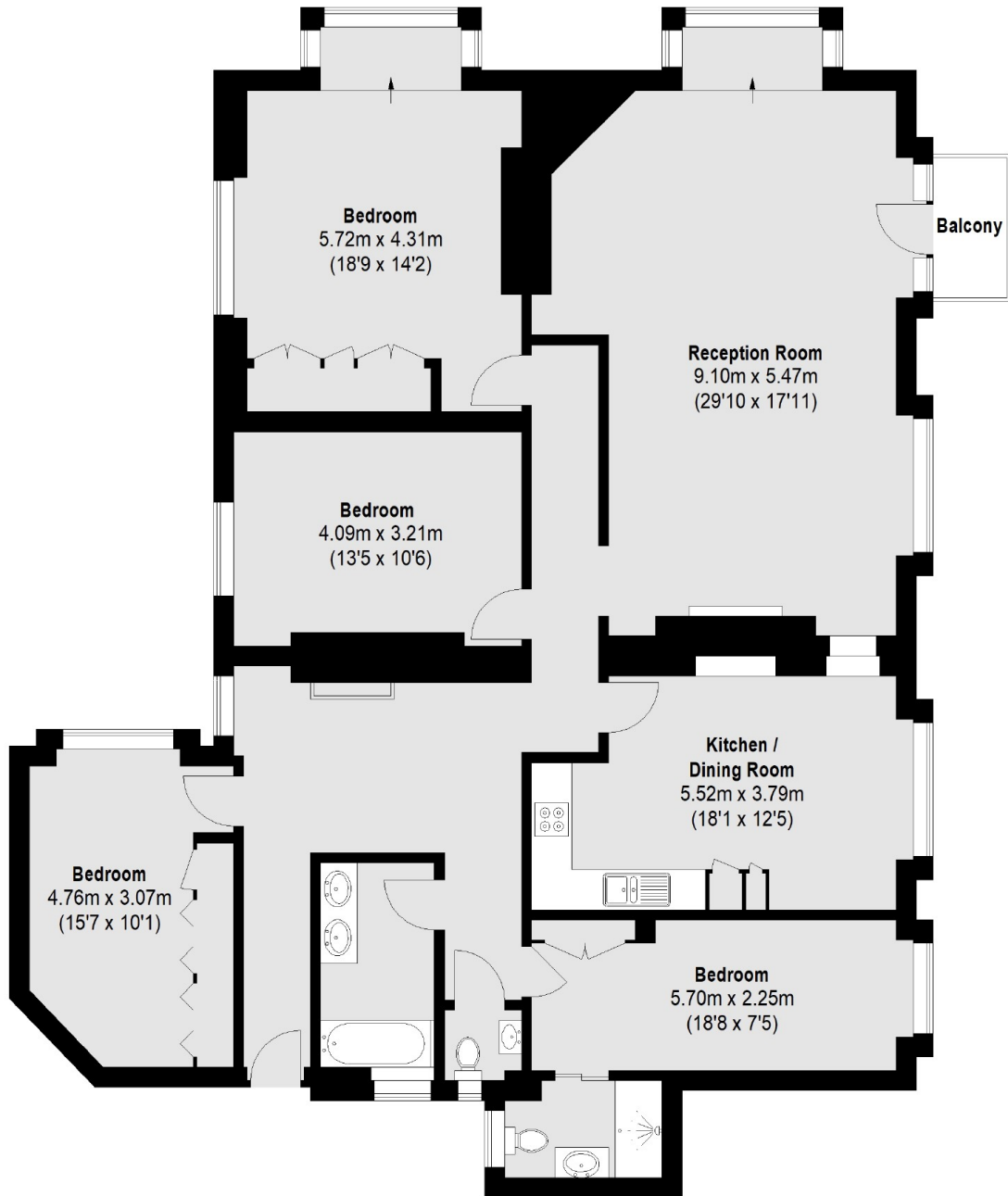
A spacious four double bedroom, two bathroom property on the second floor of a portered mansion block with lift access. The property has a double reception room with a balcony, heating included, wood flooring and ample storage. The lease expires 25/12/2075, likely costs available upon request.

Windsor Court, Moscow Road is situated on a quiet residential street in between Notting Hill Gate and Hyde Park, while Bayswater station and all the shops and restaurants of Queensway are only a short distance away.

### Features

- Four Double Bedrooms
- Eat In Kitchen
- Private Balcony
- Lift Access
- Photos Virtually Staged
- Lease Expires 25/12/2075

Moscow Road,  
London, W2



### Second Floor

Total area (approx.): 168.96 sq. m (1819 sq. ft)  
Balcony: 2.31 sq. m (25 sq. ft)