



## Porchester Road, W2

### £450,000

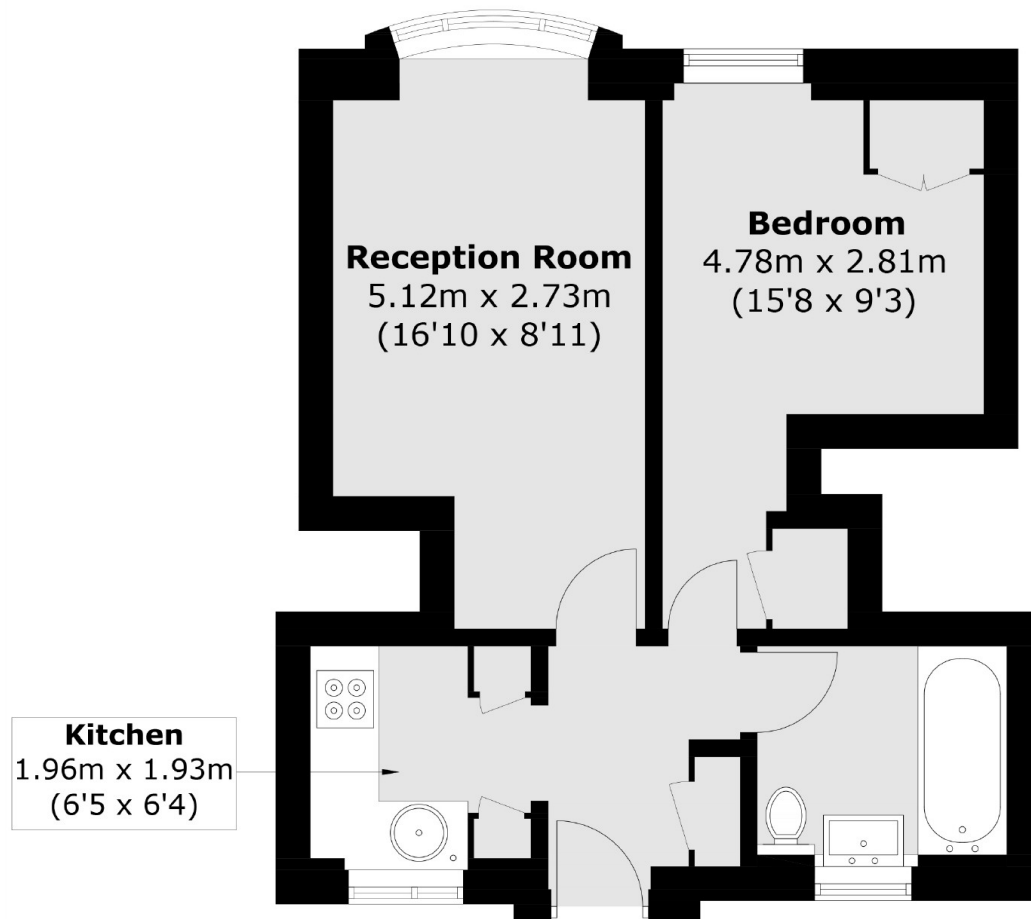
A beautifully presented one bedroom apartment in a purpose built portered mansion block. The property has a spacious reception with room to dine, a separate fitted kitchen, wooden flooring and high ceilings throughout.

Peters Court is moments from the local shops, bars and restaurants along Queensway, the green spaces of Hyde Park and plenty of local transport links.

### Features

- One Bedroom
- Separate Kitchen
- Wooden Flooring
- Lift
- Porter
- Close To Amenities

Porchester Road,  
London, W2



Total area (approx.): 36.1 sq. m (388.6 sq. ft)

**Dexters**

Westbourne Grove  
120 Westbourne Grove  
London  
W11 2RR  
Sales  
020 7313 3600

Energy Rating: C. We aim to make our particulars both accurate and reliable. However they are not guaranteed; nor do they form part of an offer or contract. If you require clarification on any points then please contact us, especially if you're traveling some distance to view. Please note that appliances and heating systems have not been tested and therefore no warranties can be given as to their good working order.

 **RICS** | Regulated  
Estate Agent  
and Letting Agent

[dexters.co.uk](https://www.dexters.co.uk)