



Bramley Road, W10

£825,000

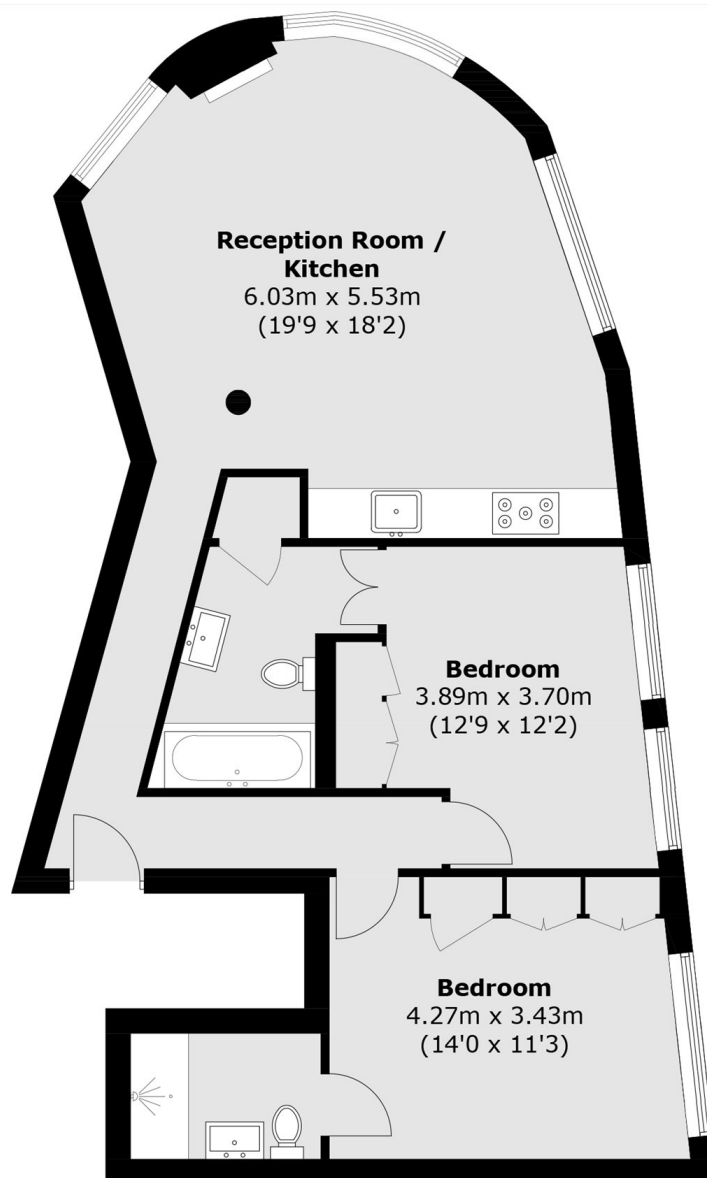
A stylish two double bedroom apartment in a converted pub. The lateral apartment has high ceilings, an open plan reception with a South facing triple aspect, wooden flooring, a modern kitchen and room to dine. Both bedrooms benefit from built in storage and en suite bathrooms.

Bramley Road is near to the shops and cafes of Ladbroke Grove, Holland Park and Shepherds Bush. Latimer Road station is close by, along with Portobello Market, Westfield Shopping centre and the green spaces of Wormwood Scrubs.

Features

- Two Double Bedrooms
- Two Bathrooms
- High Ceilings
- Open Plan
- Converted Pub

Bramley Road,
London, W10



First Floor

Total area (approx.): 76.0 sq. m (818.1 sq. ft)

Dexters

Westbourne Grove
120 Westbourne Grove
London
W11 2RR
Sales
020 7313 3600

Energy Rating: D. We aim to make our particulars both accurate and reliable. However they are not guaranteed; nor do they form part of an offer or contract. If you require clarification on any points then please contact us, especially if you're traveling some distance to view. Please note that appliances and heating systems have not been tested and therefore no warranties can be given as to their good working order.

 **RICS** | Regulated
Estate Agent
and Letting Agent

[dexters.co.uk](https://www.dexters.co.uk)