



## Airlie Gardens, W8

£550,000

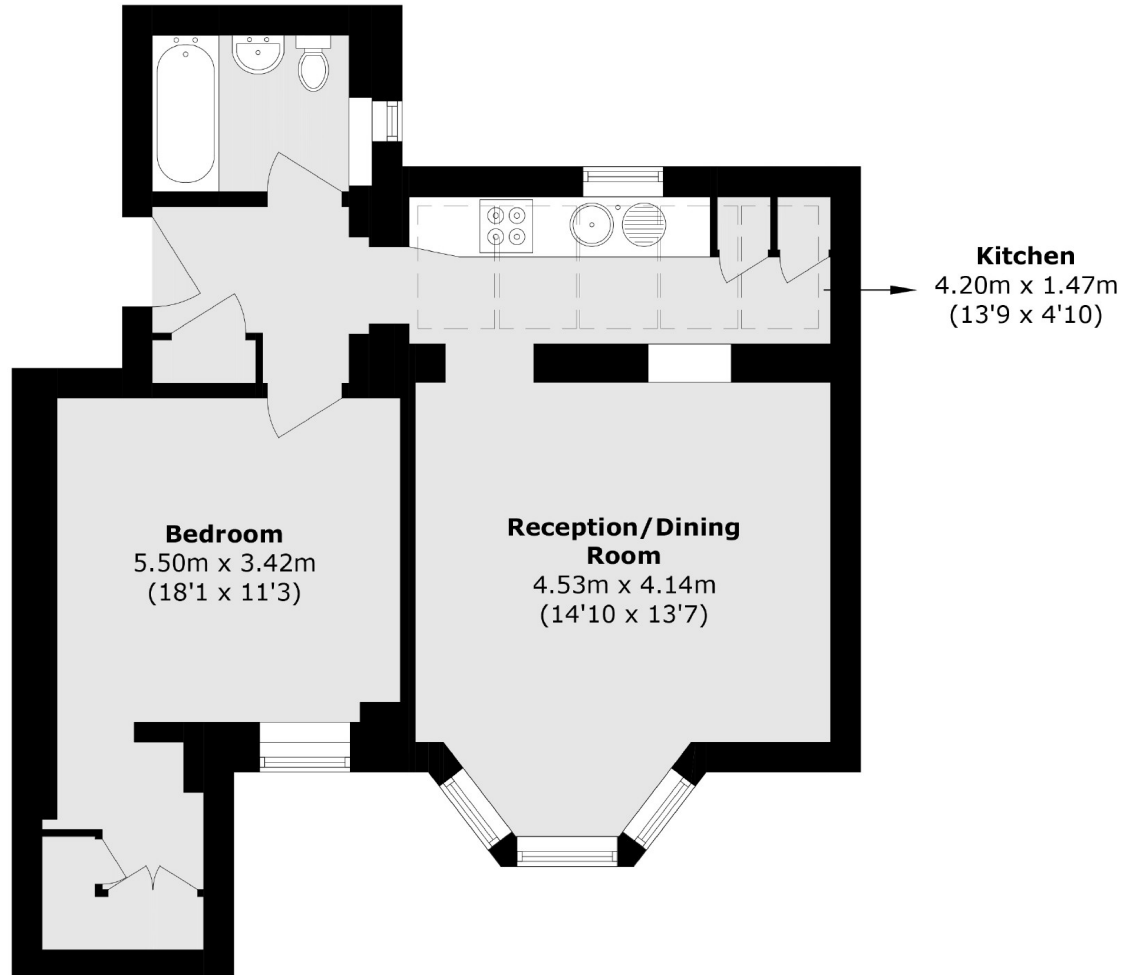
A charming one bedroom apartment in an impressive Victorian mansion block, with access to beautiful secluded private communal gardens. The apartment is well proportioned and offers good natural light from skylights in the kitchen. There are also high ceilings and wooden flooring throughout.

Airlie Gardens is a pretty cul-de-sac close to Fox Primary School and the green spaces of Kensington Gardens and Holland Park with plenty of first class amenities close by in Hillgate Village, Notting Hill Gate and Holland Park.

### Features

- One Bed
- Semi Open Plan Kitchen
- High Ceilings
- Wooden Flooring
- Communal Gardens
- Kensington

Airlie Gardens,  
London, W8



Total area (approx.): 49 sq. m (527.4 sq. ft)

**Dexters**

Westbourne Grove  
120 Westbourne Grove  
London  
W11 2RR  
Sales  
020 7313 3600

Energy Rating: D. We aim to make our particulars both accurate and reliable. However they are not guaranteed; nor do they form part of an offer or contract. If you require clarification on any points then please contact us, especially if you're traveling some distance to view. Please note that appliances and heating systems have not been tested and therefore no warranties can be given as to their good working order.

 **RICS** | Regulated  
Estate Agent  
and Letting Agent

[dexters.co.uk](http://dexters.co.uk)