



## Tavistock Road, W11

### £1,000,000

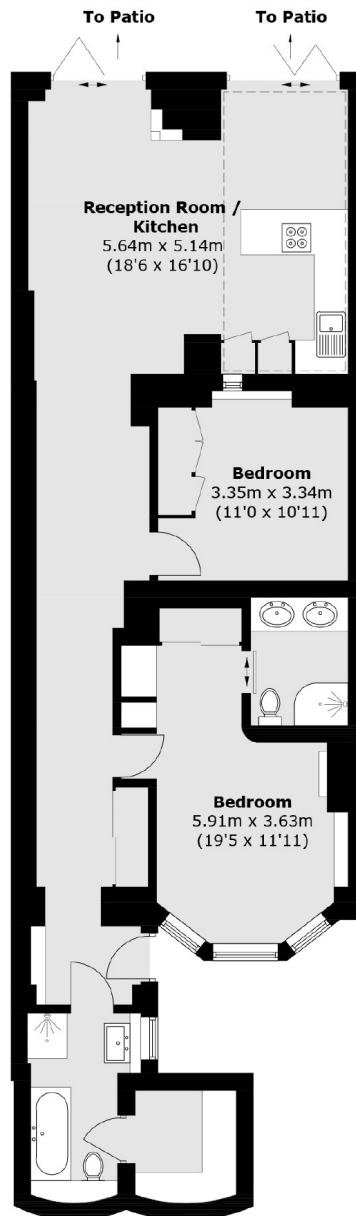
A stylishly refurbished two double bedroom garden flat with its' own front door in a Victorian conversion. With two double bedrooms, two bathrooms (one en suite) and a high specification open plan kitchen and reception room (with room to dine), leading out to the private South facing garden via bi fold doors.

Tavistock Road in Notting Hill is ideal for the bars and restaurants of Portobello Road, Westbourne Grove, and Notting Hill Gate. The green open spaces of Holland Park and Kensington Gardens are also both easily accessible and is only a short walk to Westbourne Park Underground.

### Features

- Two Bedrooms
- Two Bathrooms
- Open Plan
- South Facing Garden
- Excellent Condition
- Notting Hill

Tavistock Road,  
London, W11



**Lower Ground Floor**

Total area (approx.): 96.7 sq. m (1,040.9 sq. ft)