



## Westbourne Terrace, W2

£550,000

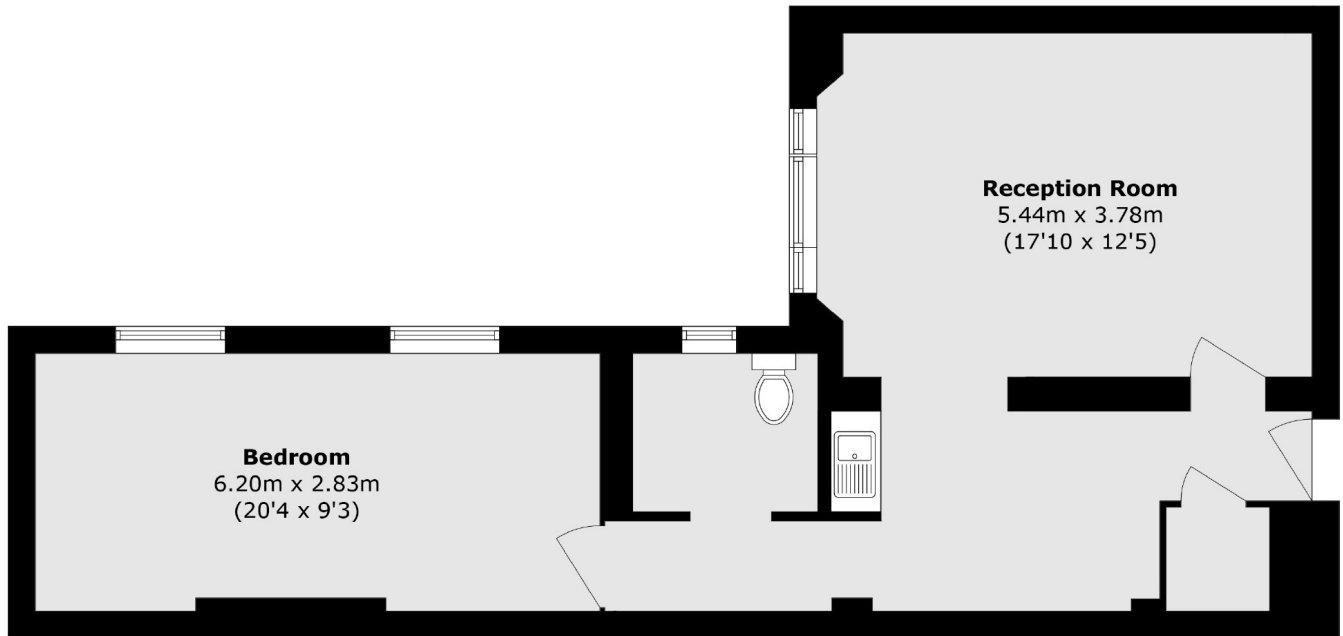
An unmodernised apartment on the raised ground floor of a white stucco fronted Victorian conversion. This is an ideal refurbishment project and has high ceilings, tall windows and will be a stunning property once refurbished.

Westbourne Terrace is conveniently located for Paddington Station, giving access across London and to Heathrow. Hyde Park is at the end of the road and there's plenty of local shops, restaurant and pubs close by.

### Features

- Unmodernised
- Ideal Project
- High Ceilings
- Raised Ground Floor
- White Stucco Fronted
- Hyde Park

Westbourne Terrace,  
London, W2



Total area (approx.): 57.8 sq. m (622.1 sq. ft)