



## Westbourne Terrace, W2

£600,000

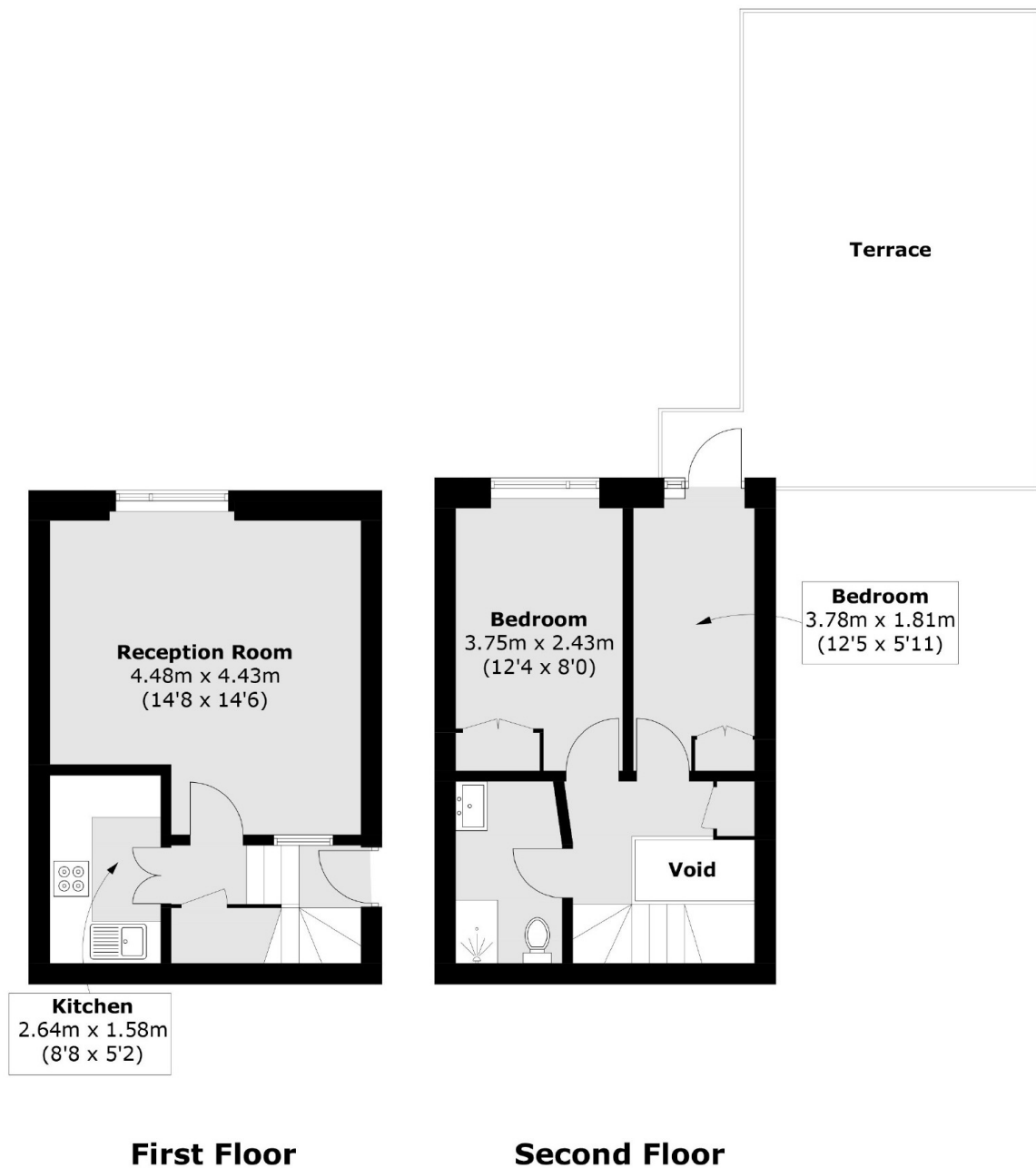
A first floor (with lift) split level, two bedroom apartment with a larger than average West facing roof terrace. Set in a white stucco fronted building and with a separate kitchen, this will make an ideal first time purchase for those looking for a convenient location.

Westbourne Terrace is a tree lined street in the heart of Paddington. Within easy walking distance of Paddington Station, Hyde Park and plenty of local shops and restaurants.

### Features

Two Bedrooms  
Separate Kitchen  
West Facing Terrace  
White Stucco Fronted  
Lift  
Paddington

# Westbourne Terrace, London, W2



Total area (approx.): 54.7 sq. m ( 588.8 sq. ft)  
Terrace : 29.5 sq. m ( 317.5 sq. ft)