



Artesian Road, W2

£825,000

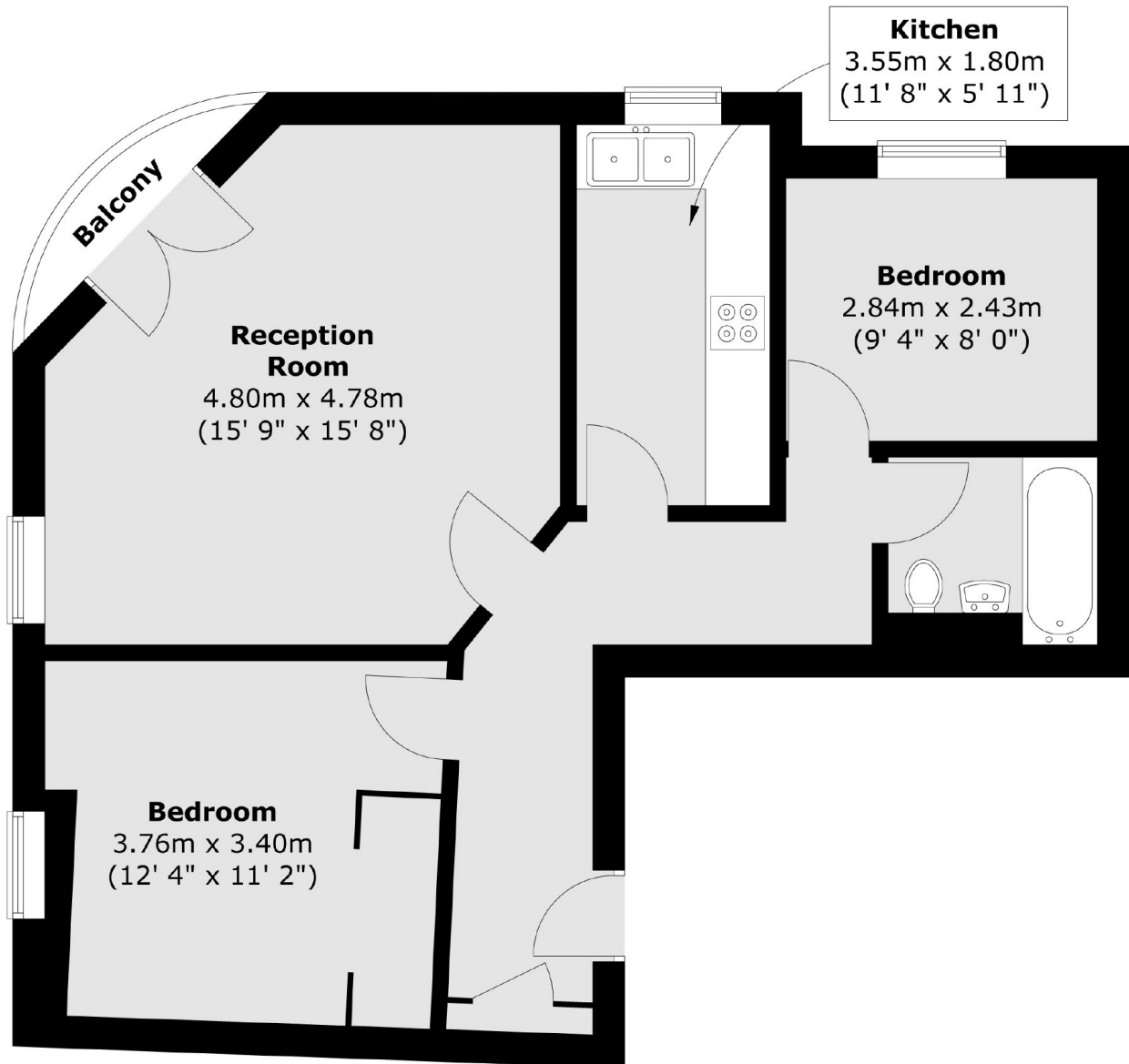
A third floor (with lift) apartment in a modern, purpose built building with a lift, porter and allocated parking space. With two bedrooms, a separate kitchen, Juliette balcony off the reception room and wooden flooring throughout, this is an ideal first time purchase or pied a terre.

The Westbourne, on Artesian Road W2 is conveniently located off Westbourne Grove and plenty of local boutique shops, restaurants and pubs. The green spaces of Hyde Park and Holland Park and a choice of transport links are close by.

Features

- Two Double Bedrooms
- Juliette Balcony
- Lift
- Porter
- Communal Gardens
- Allocated Parking Space

Artesian Road, London, W2



Total area (approx.) : 62 sq. m (667 sq. ft)
Total balcony area (approx.) : 1.3 sq. m (14 sq. ft)

Dexters

Westbourne Grove
120 Westbourne Grove
London
W11 2RR
Sales
020 7313 3600

Energy Rating: C. We aim to make our particulars both accurate and reliable. However they are not guaranteed; nor do they form part of an offer or contract. If you require clarification on any points then please contact us, especially if you're traveling some distance to view. Please note that appliances and heating systems have not been tested and therefore no warranties can be given as to their good working order.

 **RICS** | Regulated
Estate Agent
and Letting Agent

[dexters.co.uk](https://www.dexters.co.uk)