



Talbot Road, W2
£2,500,000

Dexters



Talbot Road, W2

A beautifully presented three-bedroom house with southerly patio and terrace, located in a popular Notting Hill location.

Entered via Bridstow Place, this stylish home spans four levels, with two floors dedicated to entertaining. The ground floor features a spacious open-plan kitchen and dining area that opens directly onto a southerly patio garden.

The first floor reception room is an impressive space, with high ceilings, a feature fireplace, and large windows. The principal bedroom occupies the second floor, complete with en suite shower room. The third floor offers two additional double bedrooms, serviced by a family bathroom.

Additional highlights include a generous study/home office, a suntrap terrace with a southerly aspect, a discreet utility cupboard, and a guest cloakroom located on the ground floor.

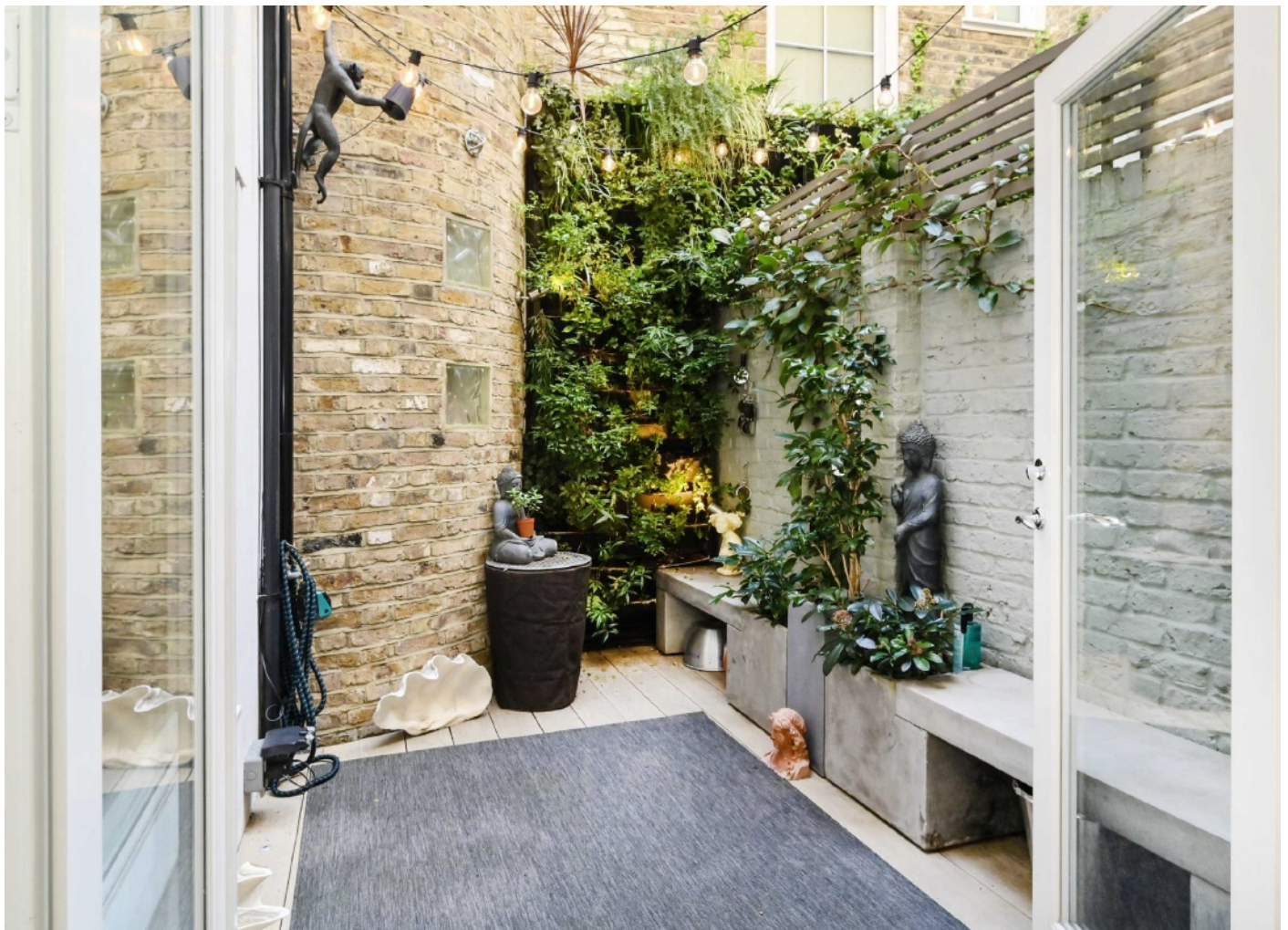
First class amenities are nearby on Westbourne Grove, Ledbury Road and Portobello Road. Tube lines can be found at Notting Hill Gate, Royal Oak and Queensway.

Features

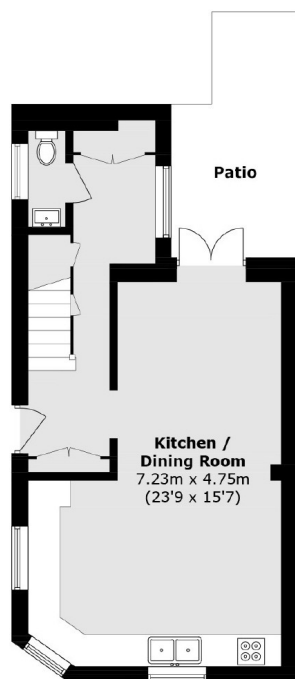
- Freehold
- Beautifully Presented
- Southerly Patio
- Additional Study
- Suntrap Terrace
- Great Location



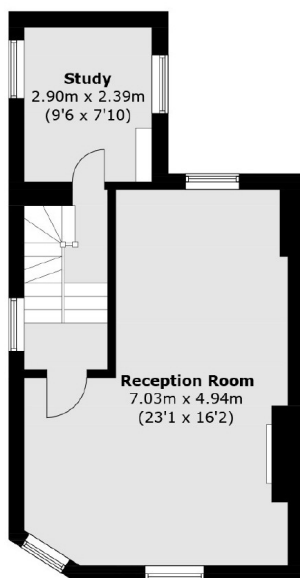




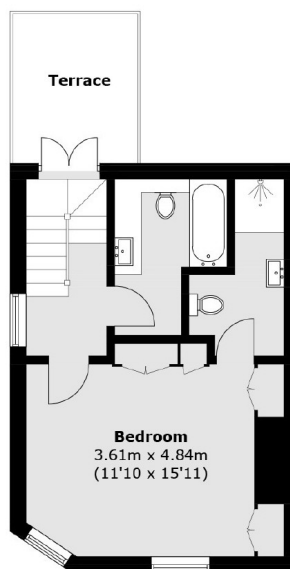
Talbot Road, London, W2



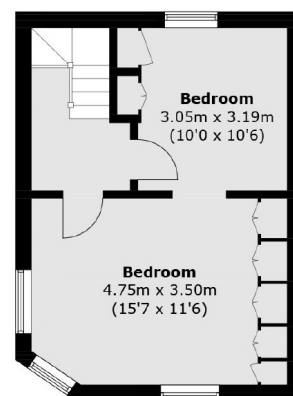
Ground Floor



First Floor



Second Floor



Third Floor

Total area (approx.): 149.7 sq. m (1,611.2 sq. ft)