



## Queensway, W2

£450,000

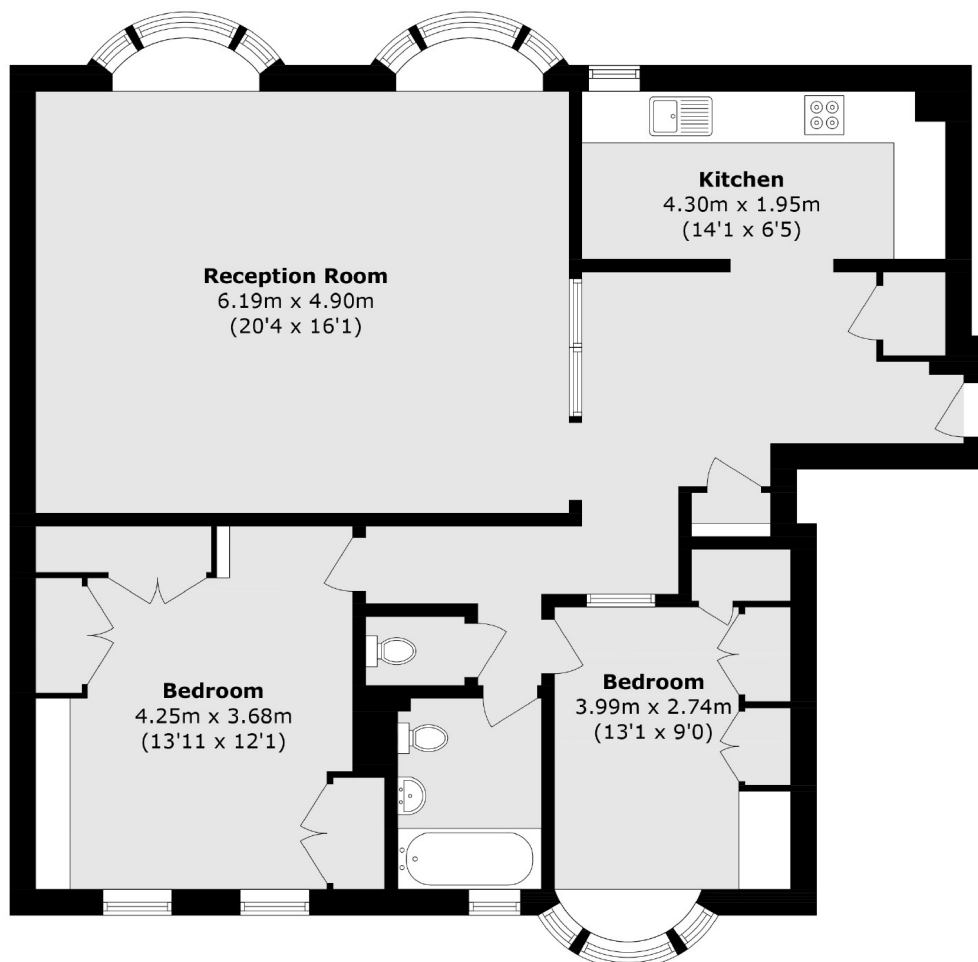
A large two double bedroom apartment in need of modernisation set within an elegant red-brick Art Deco building with a lift. The property is over 975 Sq.Ft and has a double reception room and a separate kitchen. The property comes with 45 years remaining on the lease.

Ralph Court is located on Queensway W2 and is conveniently located near the Whiteley's regeneration project, the green spaces of Hyde Park and plenty of local transport links including Paddington, giving access across London and to Heathrow.

### Features

- Two Bedrooms
- Separate Kitchen
- Spacious
- Porter
- Lift
- Bayswater

Queensway,  
London, W2



Total area (approx.): 90.9 sq. m (978.4 sq. ft)

**Dexters**

Westbourne Grove  
120 Westbourne Grove  
London  
W11 2RR  
Sales  
020 7313 3600

Energy Rating: C. We aim to make our particulars both accurate and reliable. However they are not guaranteed; nor do they form part of an offer or contract. If you require clarification on any points then please contact us, especially if you're traveling some distance to view. Please note that appliances and heating systems have not been tested and therefore no warranties can be given as to their good working order.

 **RICS** | Regulated  
Estate Agent  
and Letting Agent

[dexters.co.uk](http://dexters.co.uk)