



Airlie Gardens, W8

£1,450,000

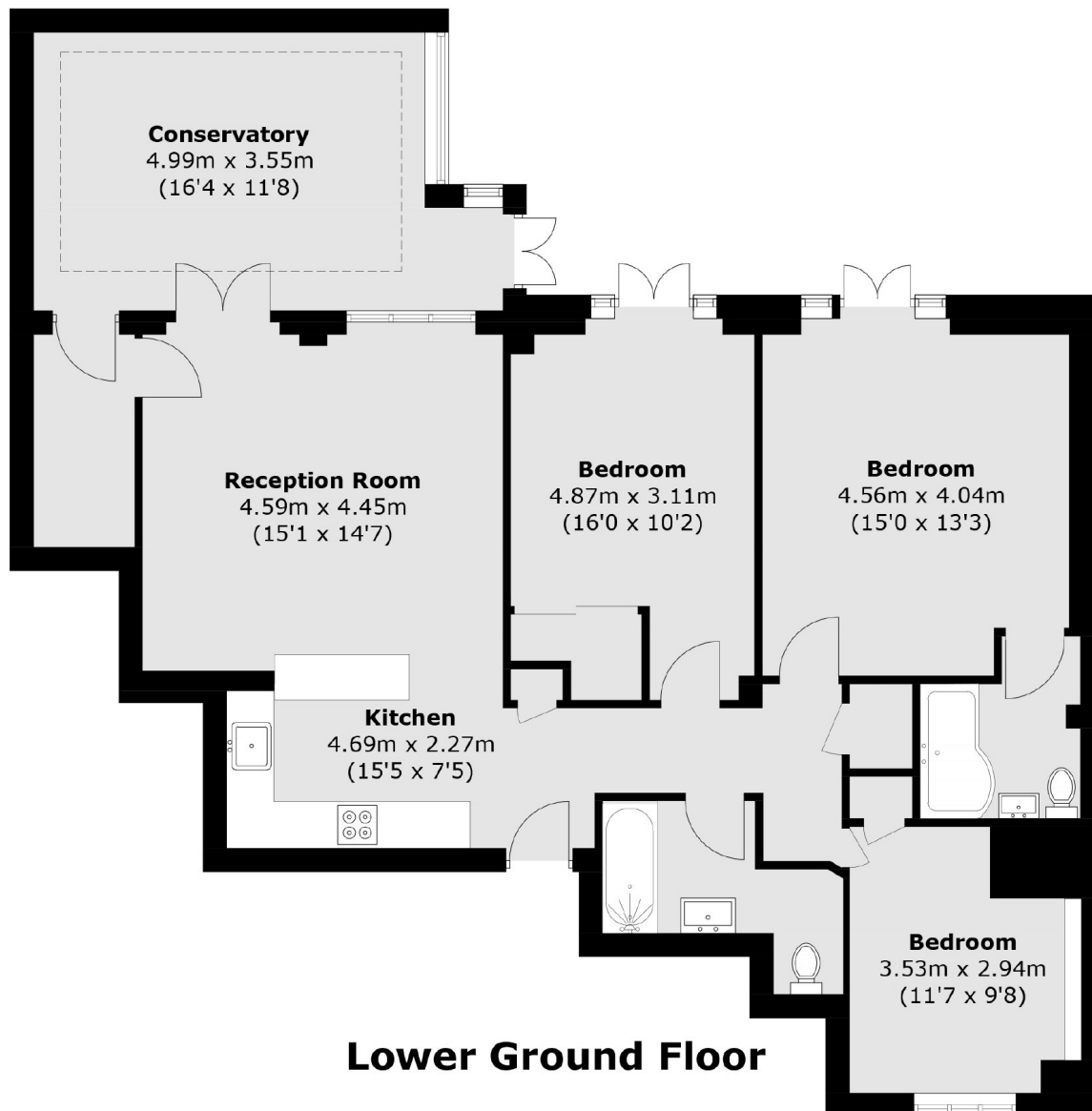
A refurbished three double bedroom garden flat, with a spacious open plan kitchen and reception room leading to a conservatory and private patio garden. With almost 1,250 Sq ft of living space, two bathrooms (one en suite) and direct access to one of the best private communal gardens in RBKC, this is an ideal home for anyone that loves a secluded location and outside entertaining.

Airlie Gardens is a no through road in the heart of Kensington, close to Fox Primary School, the green spaces of Hyde Park and plenty of transport links, restaurants and boutiques on both Kensington High Street and in Notting Hill Gate.

Features

- Three Bedrooms
- Two Bathrooms
- Open Plan
- Private Patio
- Private Communal Gardens
- Prime Kensington

Airlie Gardens, London, W8



Total area (approx.): 115.0 sq. m (1,237.9 sq. ft)