



## Aldridge Road Villas, W11

### £585,000

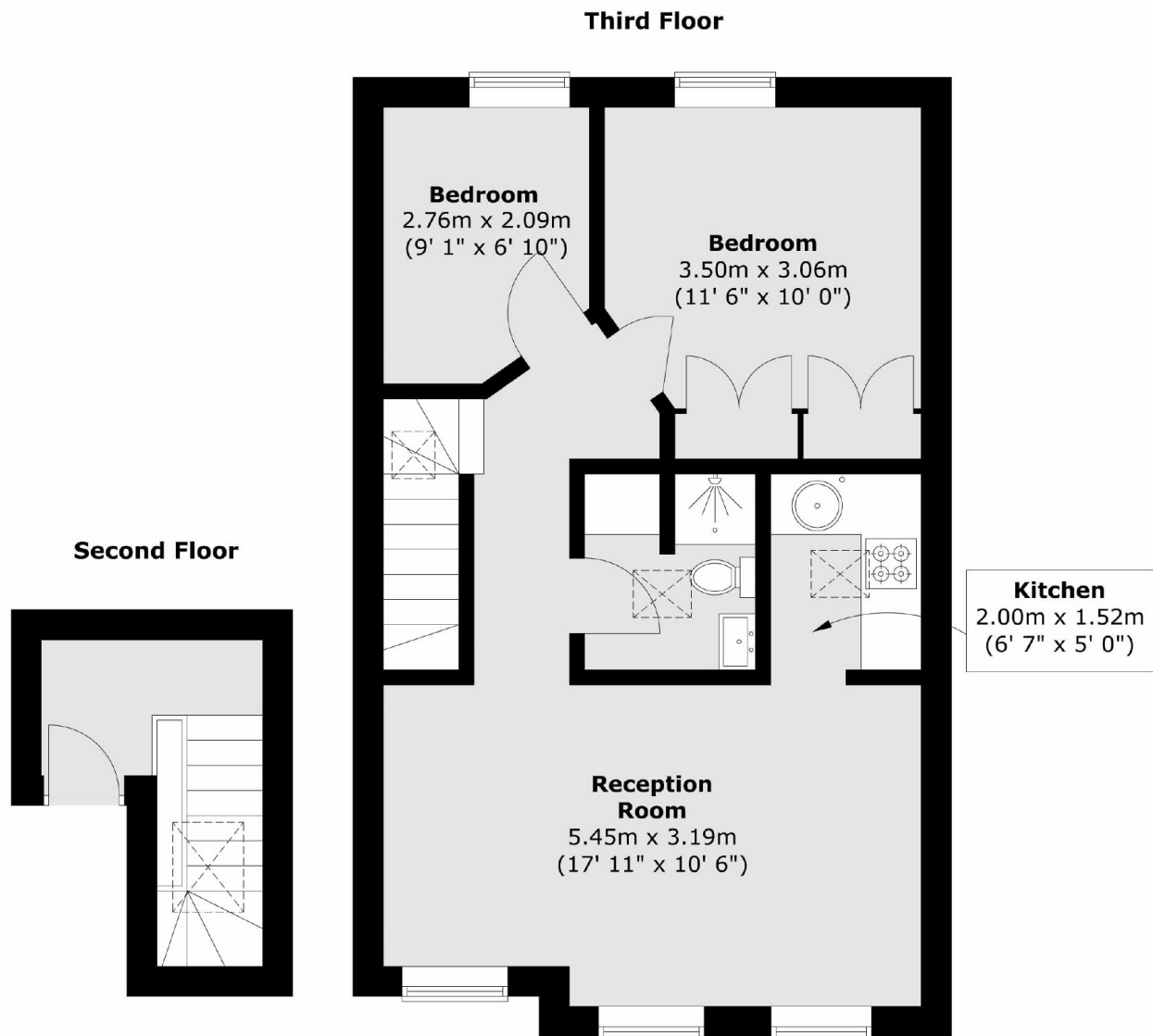
A spacious two bedroom flat set within a period Victorian conversion in Notting Hill. The property benefits from three newly installed skylights offering lots of natural light throughout, has a reception room with room to dine and a semi open plan kitchen with integrated appliances.

Aldridge Road Villas is a peaceful, tree lined residential street close to many local cafés, bars and restaurants of Portobello Road and Westbourne Grove including The Electric bar and grill and several gastro pubs including The Westbourne and The Cow.

### Features

- Two Bedrooms
- Share Of freehold
- Victorian Conversion
- Close To Amenities
- Notting Hill

# Aldridge Road Villas, London, W11



Total area (approx.) : 54.3 sq. m (563 sq. ft)