



St. Charles Square, W10

£275,000

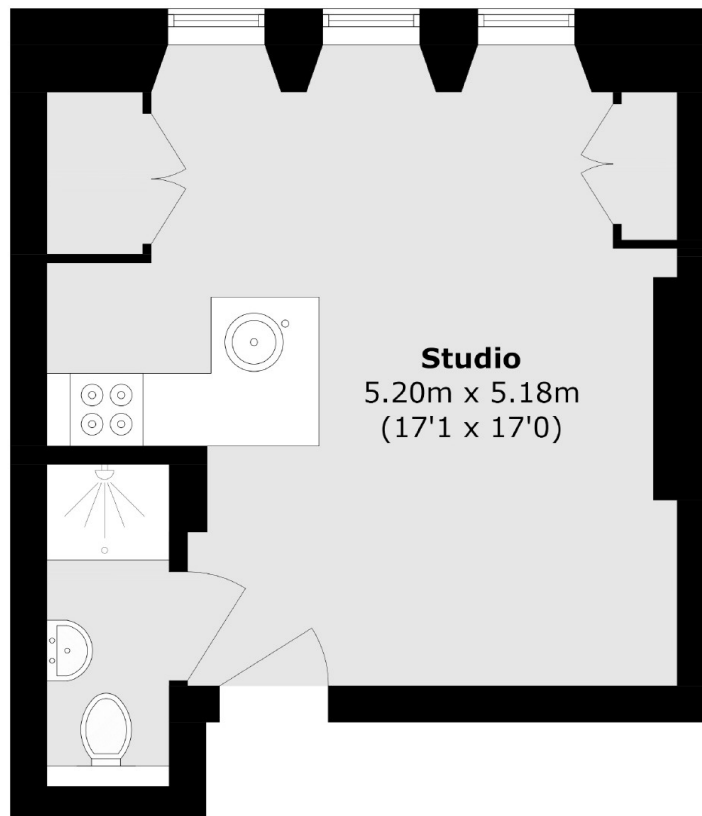
A well presented studio flat located on the second floor in an attractive Victorian Building. The property has wooden flooring, breakfast bar, and benefits from natural light throughout with westerly views.

This prime location is moments away from the shops and amenities of Goldborne and Portobello Road, with easy access to the underground at Ladbroke Grove and a walk away from Notting Hill Gate.

Features

Studio
Wooden Flooring
Close To Amenities
Built In Storage
Notting Hill

St. Charles Square,
London, W10



Total area (approx.): 28.3 sq. m (304.6 sq. ft)

Dexters

Westbourne Grove
120 Westbourne Grove
London
W11 2RR
Sales
020 7313 3600

Energy Rating: C. We aim to make our particulars both accurate and reliable. However they are not guaranteed; nor do they form part of an offer or contract. If you require clarification on any points then please contact us, especially if you're traveling some distance to view. Please note that appliances and heating systems have not been tested and therefore no warranties can be given as to their good working order.

 **RICS** | Regulated
Estate Agent
and Letting Agent

dexters.co.uk