



Oxford Gardens, W10

£799,950

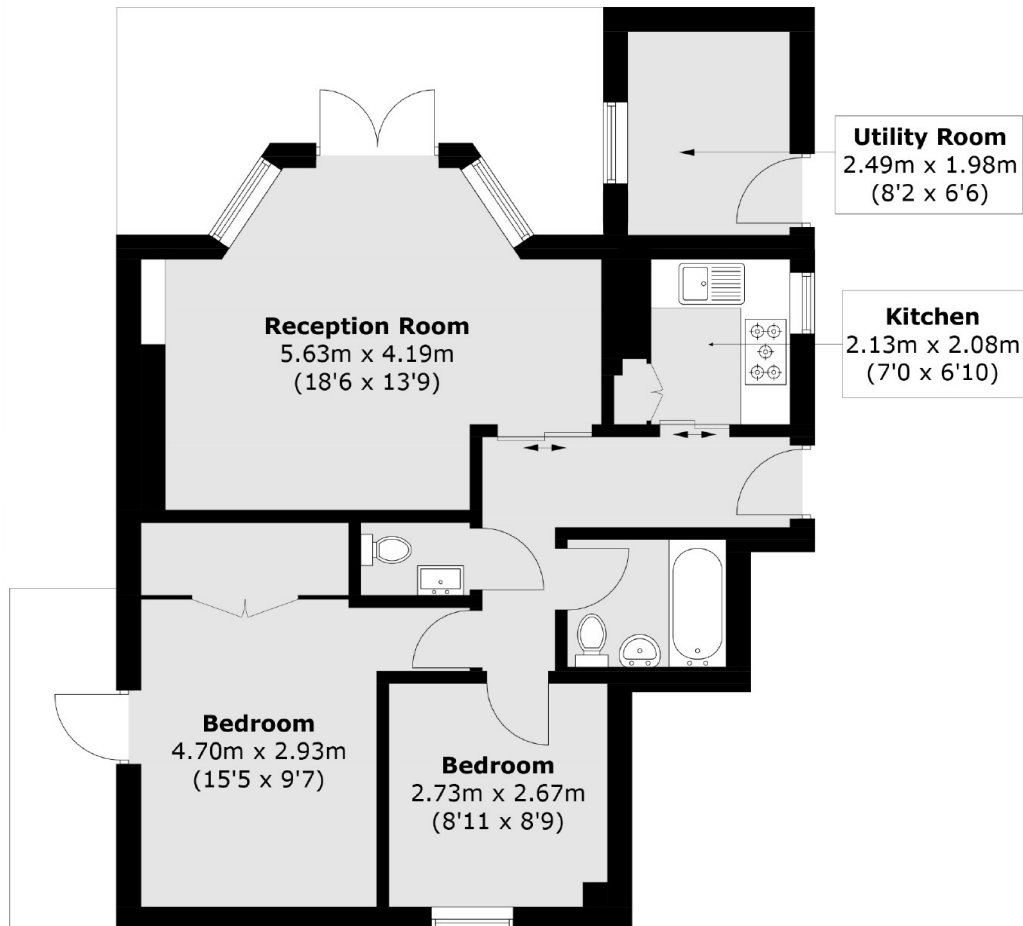
A beautifully presented two bedroom apartment in a Victorian period conversion. There is a separate kitchen and large reception room with space to dine which leads onto a patio garden. The principal bedroom has access to a separate terrace, and there is herringbone wooden flooring, plenty of storage and natural light throughout.

Oxford Gardens is a tree lined, residential road close to Ladbroke Grove Underground and within walking distance of the boutiques, independent shops and restaurants on Golborne Road and Portobello Road. The green spaces of Hyde Park and Holland Park are also close by.

Features

Two Bedrooms
Wooden Flooring
Separate Kitchen
Terrace and Patio Garden
RBKC

Oxford Gardens, London, W10



Total area (approx.): 58.7 sq. m (631.8 sq. ft)
Utility Room (approx.): 5.1 sq. m (54.9 sq. ft)

Dexters

Westbourne Grove
120 Westbourne Grove
London
W11 2RR
Sales
020 7313 3600

Energy Rating: D. We aim to make our particulars both accurate and reliable. However they are not guaranteed; nor do they form part of an offer or contract. If you require clarification on any points then please contact us, especially if you're traveling some distance to view. Please note that appliances and heating systems have not been tested and therefore no warranties can be given as to their good working order.

 **RICS** | Regulated
Estate Agent
and Letting Agent

[dexters.co.uk](https://www.dexters.co.uk)