



Chepstow Road, W2

£550,000

Beautifully finished and flooded with natural light, a one double bedroom apartment in a white stucco fronted building, with a modern kitchen and bathroom, ideal for a first time buyer or investment.

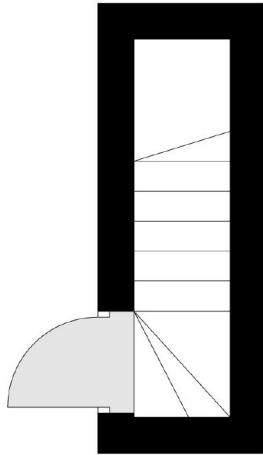
Chepstow Road is a tree lined residential road in Notting Hill, off Westbourne Grove with plenty of chic restaurants, shops and cafés, within close proximity to the green open spaces of Hyde Park, and convenient transport links via Westbourne Park, Holland Park and Notting Hill Gate.

Features

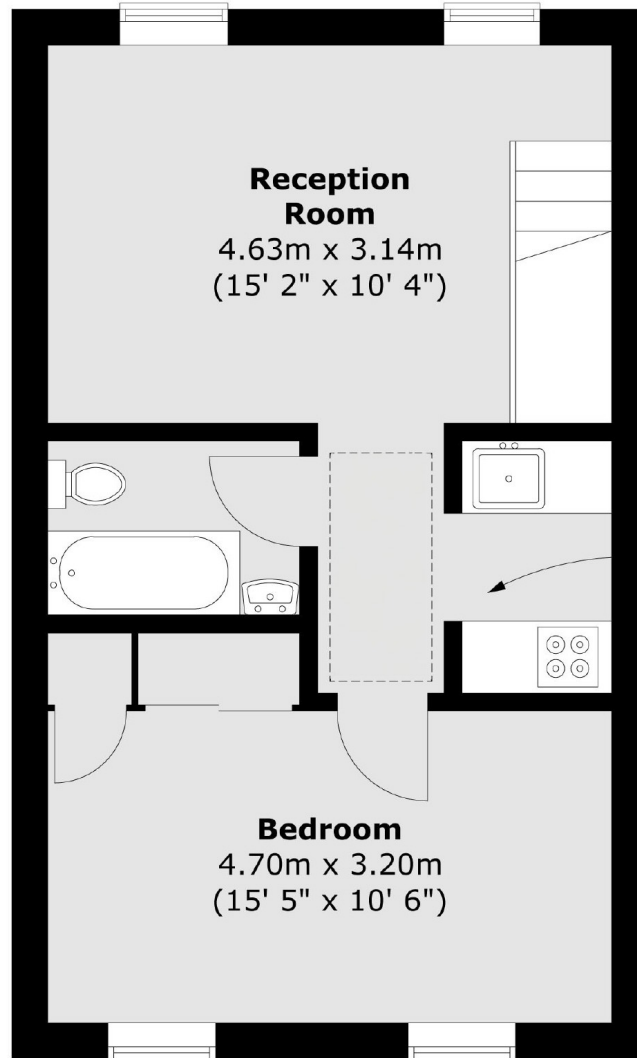
- Share of Freehold
- One Double Bedroom
- Top Floor
- Flooded with Natural Light
- Separate Kitchen
- Victorian Conversion
- Close to Amenities

Chepstow Road,
London, W2

Second Floor



Third Floor



Reception Room

4.63m x 3.14m
(15' 2" x 10' 4")

Kitchen

2.00m x 1.20m
(6' 7" x 3' 11")

Bedroom

4.70m x 3.20m
(15' 5" x 10' 6")

Total area (approx.) : 41 sq. m (441 sq. ft)

Dexters

Westbourne Grove
120 Westbourne Grove
London
W11 2RR
Sales
020 7313 3600

Energy Rating: D. We aim to make our particulars both accurate and reliable. However they are not guaranteed; nor do they form part of an offer or contract. If you require clarification on any points then please contact us, especially if you're traveling some distance to view. Please note that appliances and heating systems have not been tested and therefore no warranties can be given as to their good working order.

 **RICS** | Regulated
Estate Agent
and Letting Agent

dexters.co.uk