

Porchester Square, W2

£575,000

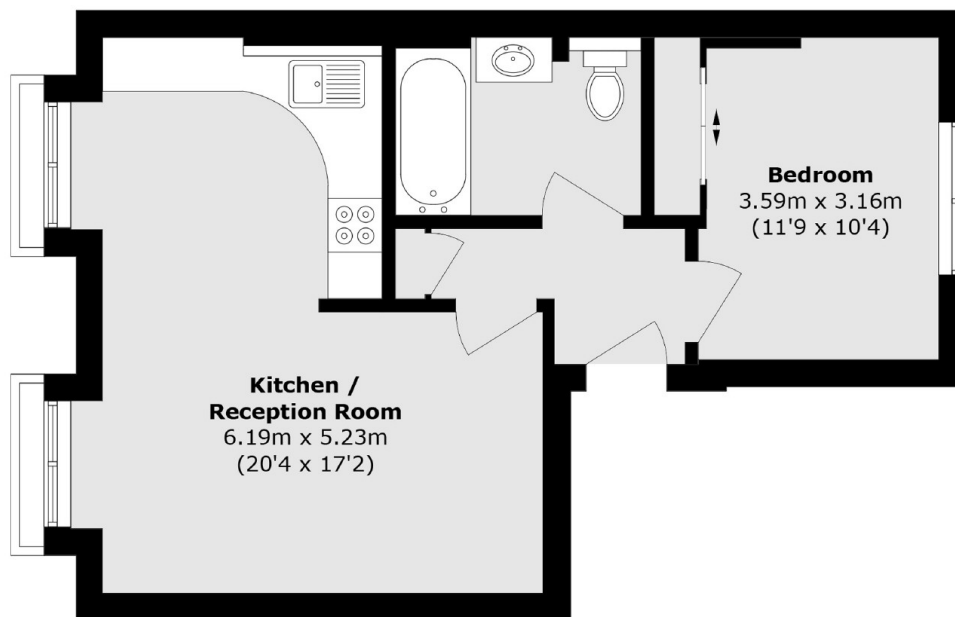
A spacious and well decorated one bedroom apartment located on the raised ground floor in a Victorian period conversion. The property benefits from a south facing open plan reception room overlooking communal gardens, a large bedroom with built in storage and high ceilings throughout.

Porchester Square is ideally located near a large Waitrose supermarket and the shops of Westbourne Grove and Queensway. The closest transport links are Royal Oak and Bayswater whilst Paddington Station is also a short walk away.

Features

- One Double Bedroom
- High Ceilings
- Refurbished
- Garden Square
- Victorian Conversion
- Close To Amenities

Porchester Square, London, W2



Total area (approx.): 47.2 sq. m (508.1 sq. ft)

Dexters

Westbourne Grove
120 Westbourne Grove
London
W11 2RR
Sales
020 7313 3600

Energy Rating: C. We aim to make our particulars both accurate and reliable. However they are not guaranteed; nor do they form part of an offer or contract. If you require clarification on any points then please contact us, especially if you're traveling some distance to view. Please note that appliances and heating systems have not been tested and therefore no warranties can be given as to their good working order.

 **RICS** | Regulated
Estate Agent
and Letting Agent

dexters.co.uk