

Gloucester Mews West
Hyde Park, W2

Dexters



About the property

A stylishly refurbished and extended house set on a cobbled mews near Hyde Park. Arranged over four floors, the property welcomes you on the ground floor with a striking feature staircase and light well.

The principal bedroom spans the top floor and has a luxurious en suite bathroom and ample storage space. There are four additional double bedrooms and four bathrooms. The lower level features a spacious open plan reception room, high specification kitchen, high

ceilings and access to a private decked patio, perfect for entertaining family and friends.

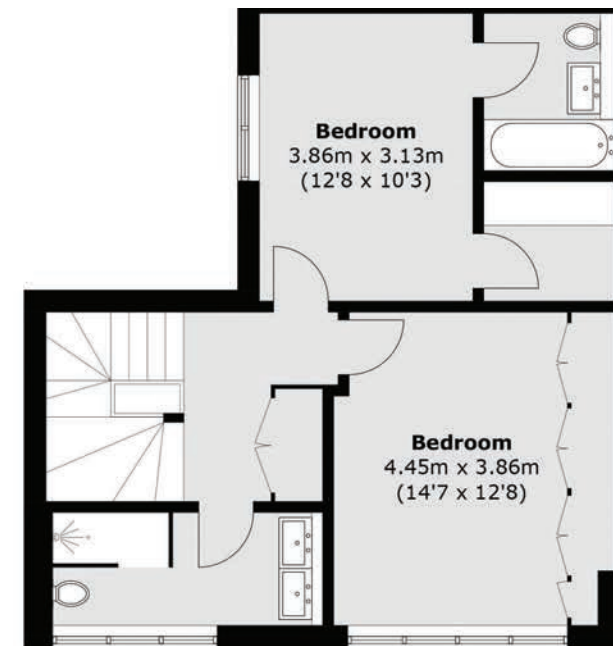
The property is conveniently located close to Paddington station providing access to the Heathrow Express, and Elizabeth line. The upcoming Whiteley and Bayswater regeneration project, which will include shops, restaurants and luxury boutiques, is also nearby.

Key features

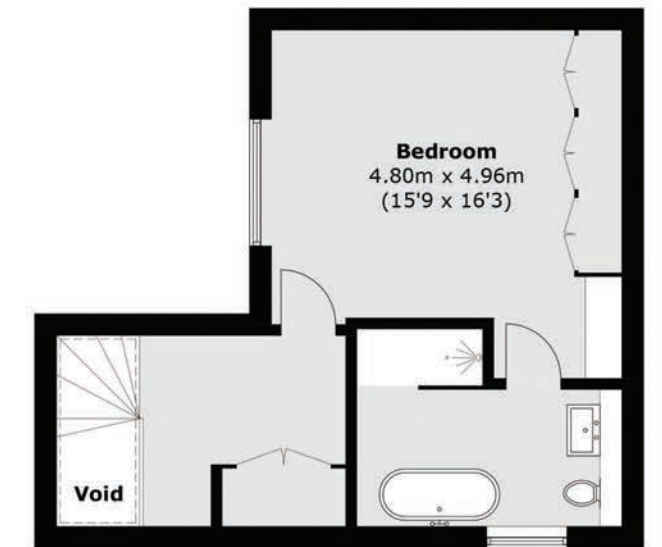
- Five Bedrooms
- Five Bathrooms
- Open Plan
- Patio
- Four Floors
- Hyde Park



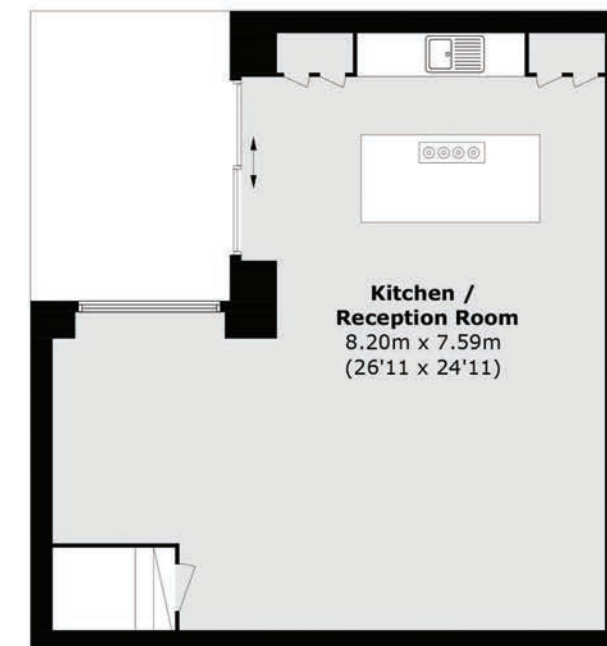




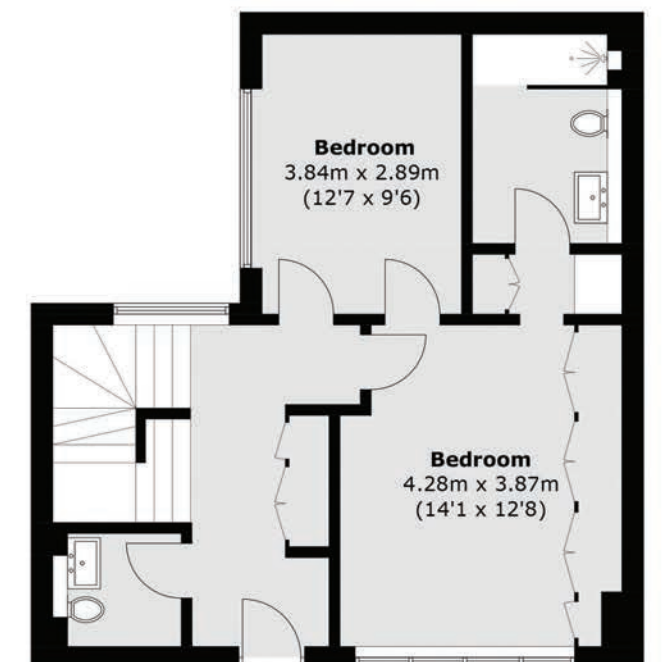
First Floor



Second Floor



Lower Ground Floor



Ground Floor



TOTAL APPROX. FLOOR AREA 2,149.4 SQ. FT (199.7 SQ. M) (EXCLUDING VOID)

Energy Rating: B. We aim to make our particulars both accurate and reliable. However they are not guaranteed; nor do they form part of an offer or contract. If you require clarification on any points then please contact us, especially if you're traveling some distance to view. Please note that appliances and heating systems have not been tested and therefore no warranties can be given as to their good working order.



Dexters Westbourne Grove
120 Westbourne Grove,
London, W11 2RR
020 7313 3600

Dexters