



Clanricarde Gardens, W2

£895,000

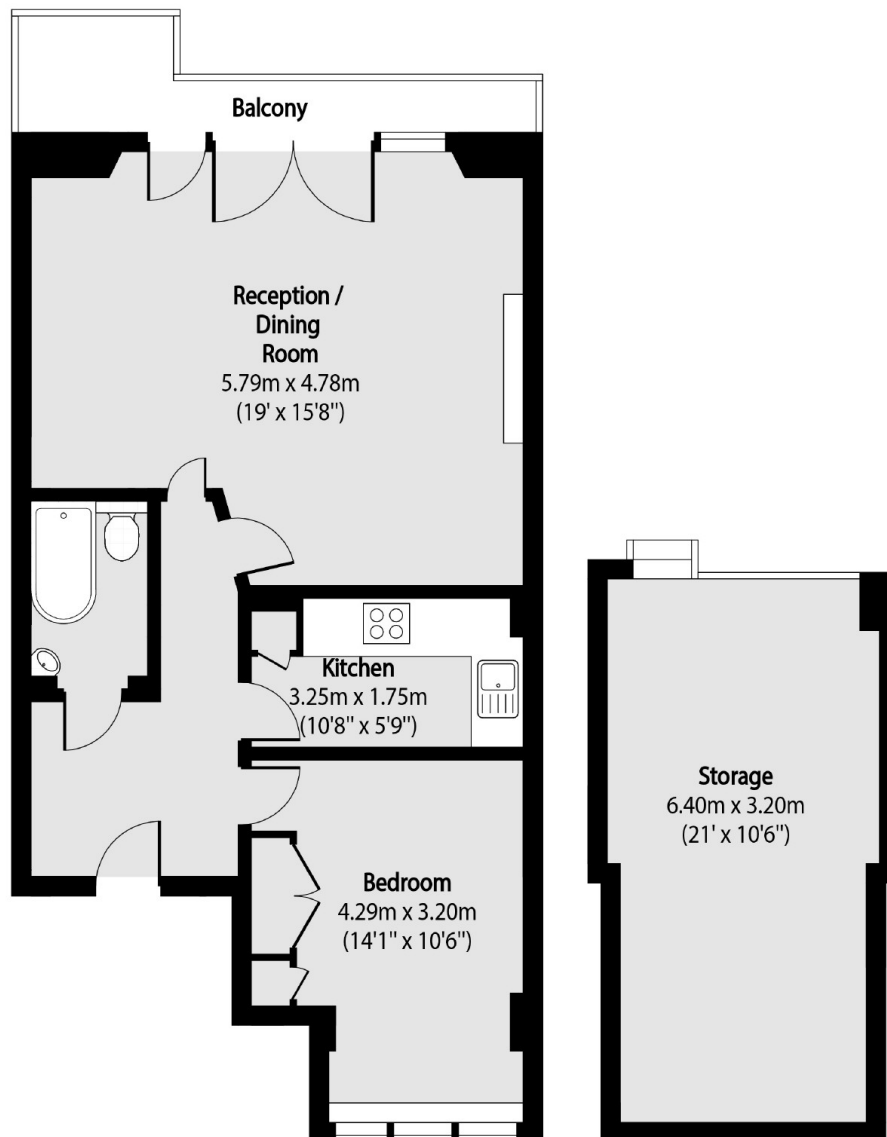
A spacious one bedroom flat located on the first floor in a Victorian Conversion. The property has a large reception room with room to dine and entertain leading onto a south facing balcony. It boasts high ceilings and period features throughout alongside ample storage.

Clanricarde Gardens is a 'no through' road, in the heart of Notting Hill, opposite Kensington Palace and Hyde Park. The property is ideally situated within a close proximity to Notting Hill Gate and Westbourne Grove while Notting Hill Gate station is a short walk away.

Features

- One Bedroom
- First Floor
- Balcony
- High Ceilings
- Prime Location
- Notting Hill

Clanricarde Gardens, London, W2



First Floor

Mezzanine

Total area (approx): 56.67 sq m (610 sq. ft)

(Excluding Mezzanine)

Balcony total area (approx): 5.10 sq m (55 sq. ft)

Storage total area (approx): 19.41 sq m (209 sq. ft)