



Greens Court, W11  
£1,850,000

**Dexters**





## Greens Court, W11

A four bedroom, two reception room house forming part of a small exclusive secure gated development with south facing roof terrace and underground parking space close to Holland Park underground station (Central Line).

This modern purpose built house has accommodation arranged over three floors comprising: hallway, reception room, kitchen and cloakroom on the ground floor; reception room, master bedroom with bathroom en suite on the first floor, and then three bedrooms and a bathroom on the second floor. Outside there is a large South Facing terrace leading from the reception room.

The property is part of a small secure gated development accessed from Lansdowne Mews into a foyer with lift access to the entry level one floor up, where a central patio gardens area gives access to each property. There is also a secure underground parking space.

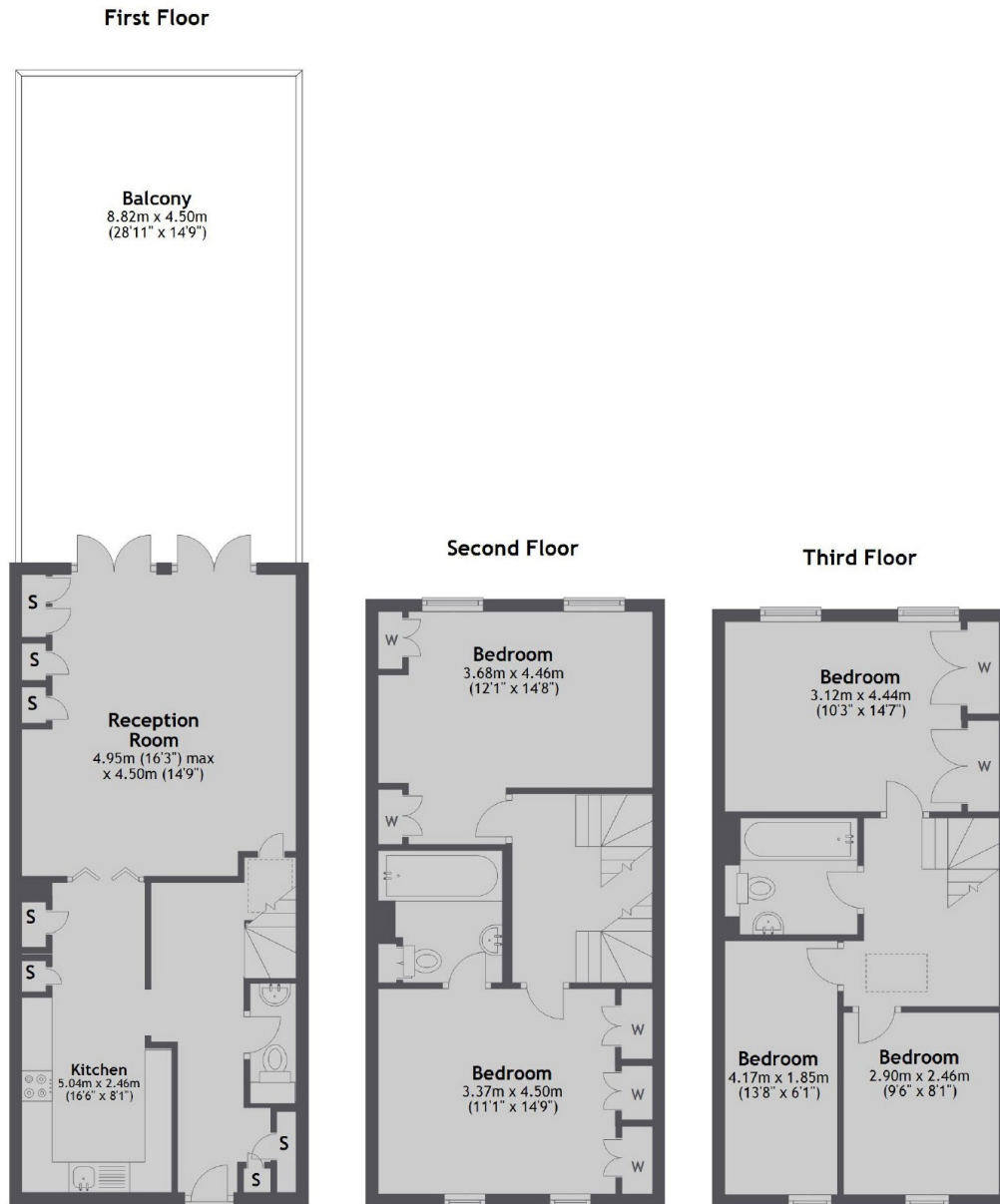
Greens Court is very conveniently located in prime Holland Park close to the shops and restaurants in Holland Park Avenue, the underground station (Central Line) and Holland Park itself is a short walk.

### Features

- Four Bedrooms
- Two Reception Rooms
- Two Bathrooms
- Large Terrace
- Underground Parking
- Secure Gated Development



# Greens Court, London, W11



Main area: Approx. 130.9 sq. metres (1409.1 sq. feet)  
Plus balconies, approx. 37.0 sq. metres (398.6 sq. feet)

## Dexters

Westbourne Grove  
120 Westbourne Grove  
London  
W11 2RR  
Sales  
020 7313 3600

Energy Rating: E. We aim to make our particulars both accurate and reliable. However they are not guaranteed; nor do they form part of an offer or contract. If you require clarification on any points then please contact us, especially if you're traveling some distance to view. Please note that appliances and heating systems have not been tested and therefore no warranties can be given as to their good working order.

 **RICS** | Regulated  
Estate Agent  
and Letting Agent

[dexters.co.uk](https://www.dexters.co.uk)