



Lancaster Terrace, W2

£1,150,000

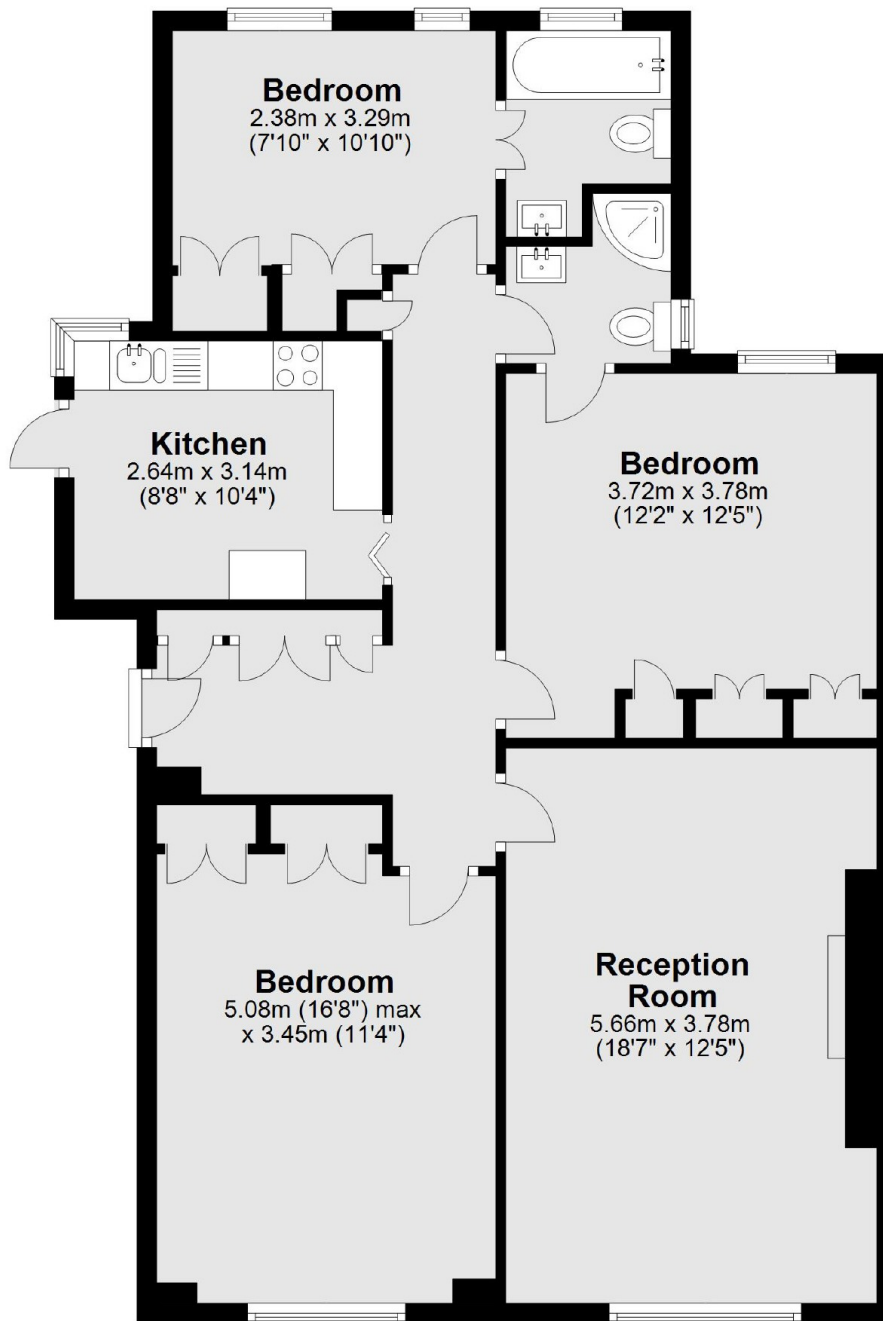
This larger than average three double bedroom flat is situated on the ground floor of a popular red brick development on Lancaster Gate. The property has a large reception room with room to dine and entertain, two bathrooms and a separate kitchen.

The property is perfectly located moments away from Hyde Park and Notting Hill Gate, while Paddington Station and Lancaster Gate stations are only a short distance away.

Features

- Three Double Bedrooms
- Two Bathrooms
- Wood Flooring
- Separate Kitchen
- Hyde Park
- Porter

Lancaster Terrace, London, W2



Total area: approx. 89.5 sq. metres (963.4 sq. feet)

Dexters

Westbourne Grove
120 Westbourne Grove
London
W11 2RR
Sales
020 7313 3600

Energy Rating: C. We aim to make our particulars both accurate and reliable. However they are not guaranteed; nor do they form part of an offer or contract. If you require clarification on any points then please contact us, especially if you're traveling some distance to view. Please note that appliances and heating systems have not been tested and therefore no warranties can be given as to their good working order.

 **RICS** | Regulated
Estate Agent
and Letting Agent

[dexters.co.uk](https://www.dexters.co.uk)