

Bevington Road, W10

£535,000

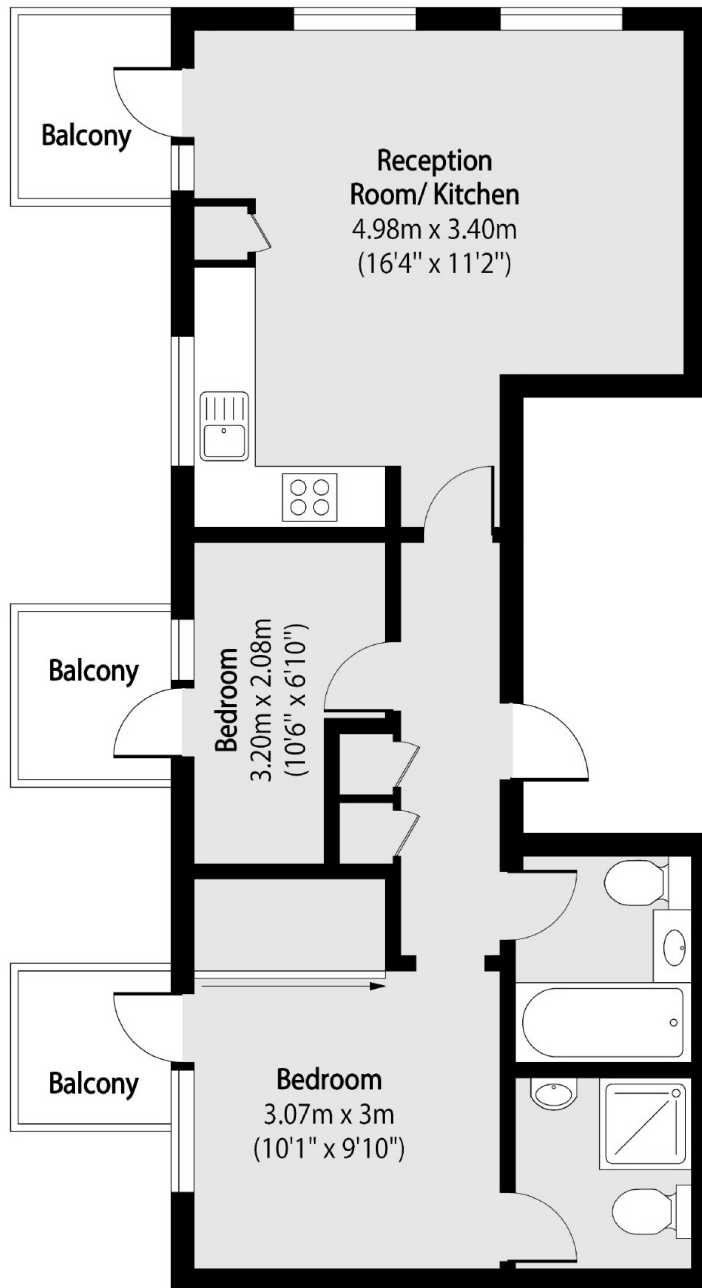
A modern two-bedroom, two-bathroom flat on the second floor of the popular Picasso Building. There's a spacious open-plan living and dining area with floor-to-ceiling windows, a contemporary kitchen with integrated appliances, and two double bedrooms. There are three west-facing balconies, and the principal bedroom has an en suite.

Picasso Building is quietly located, just a short walk from the lively shops, cafés, and markets of Golborne and Portobello Roads. Ladbroke Grove Station is 0.4 miles away providing easy access to King's Cross, Paddington, and Liverpool Street.

Features

- Two Bedrooms
- Two Bathrooms
- Open Plan
- Lift
- West Facing Balconies

Bevington Road,
London, W10



Total area (approx): 52.21 sq m (562 sq. ft)

Balcony total area (approx): 7.71 sq m (83 sq. ft)

Dexters

Westbourne Grove
120 Westbourne Grove
London
W11 2RR
Sales
020 7313 3600

Energy Rating: B. We aim to make our particulars both accurate and reliable. However they are not guaranteed; nor do they form part of an offer or contract. If you require clarification on any points then please contact us, especially if you're traveling some distance to view. Please note that appliances and heating systems have not been tested and therefore no warranties can be given as to their good working order.

 **RICS** | Regulated
Estate Agent
and Letting Agent

[dexters.co.uk](https://www.dexters.co.uk)