

Campden Hill Gardens
Kensington, W8

Dexters



About the property

An incredible former artists studio, with over 2,700 sq. ft of living space, epic proportions and a private terrace. This will make an ideal home for anyone that seeks a sense of luxury and loves entertaining in an impressive space.

The double height reception room has an open plan high specification kitchen, dining and living space. The windows fill the room with plenty of natural light. The mezzanine library and study overlooks the living space. There are three spacious bedrooms, each with it's own bathroom - plenty of space for family and friends.

Located on Campden Hill Gardens, a highly desirable residential road in Kensington, positioned conveniently between Notting Hill Gate and High Street Kensington. Within close proximity of Fox Primary School, and a short walk to the green spaces of Holland Park and plenty of boutiques, restaurants and transports on the doorstep.



Key features

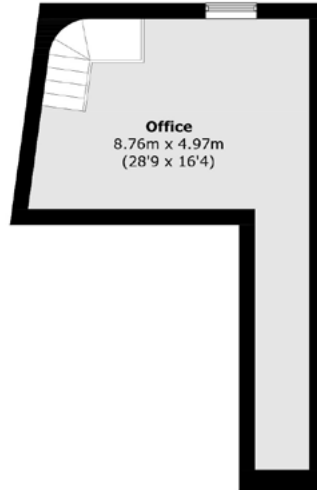
- Three Bedrooms
- Three Luxury Bathrooms
- Unique Freehold House
- High Ceilings
- Mezzanine Library
- Private Terrace



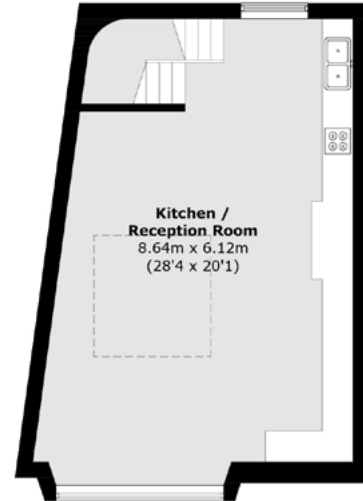




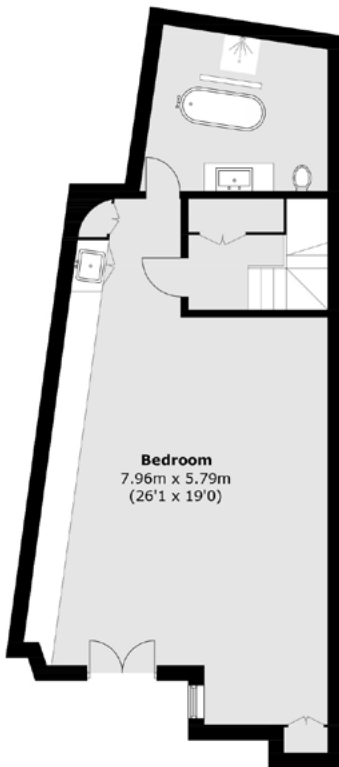




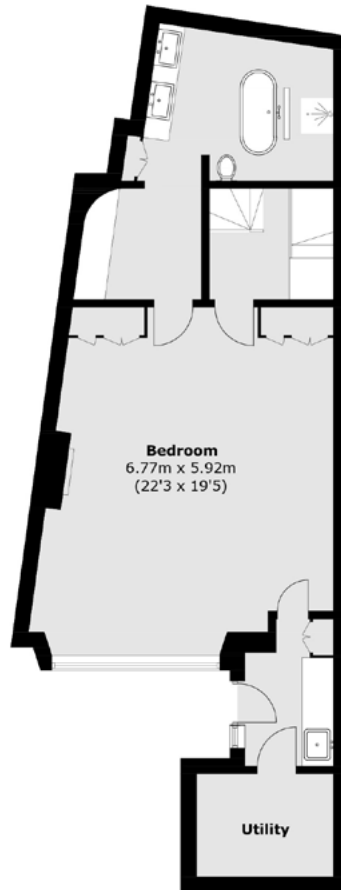
Second Floor



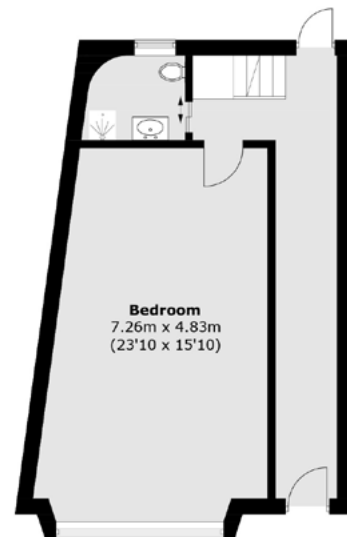
First Floor



Basement



Lower Ground Floor



Ground Floor

TOTAL AREA (APPROX.): 2,716.7 SQ. FT (252.4 SQ. M)

Energy Rating: E. We aim to make our particulars both accurate and reliable. However they are not guaranteed; nor do they form part of an offer or contract. If you require clarification on any points then please contact us, especially if you're traveling some distance to view. Please note that appliances and heating systems have not been tested and therefore no warranties can be given as to their good working order.



Dexters Westbourne Grove
120 Westbourne Grove,
London, W11 2RR
020 7313 3600

Dexters