



Oxford Gardens, W10

£525,000

A one bedroom apartment on the first floor of a well maintained Victorian conversion. The property has a dual aspect, open plan reception with fitted kitchen, high ceilings and wood flooring, and built in storage in the bedroom.

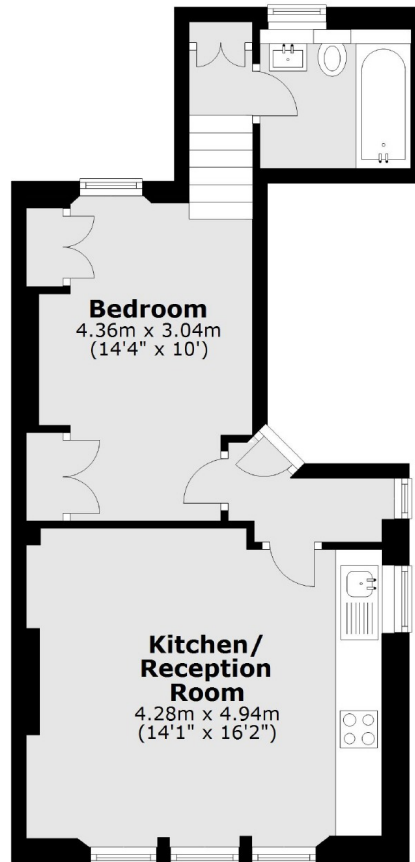
Oxford Gardens is a sought after residential road in prime W10 within close proximity to Ladbroke Grove, Portobello Road and Ladbroke Grove underground station.

Features

One Bedroom
Dual Aspect Reception
High Ceilings
Wood Flooring
Open Plan
Close To Amenities

Oxford Gardens, London, W10

First Floor



Total area: approx. 42.6 sq. metres (458.3 sq. feet)