



Queensway, W2

£525,000

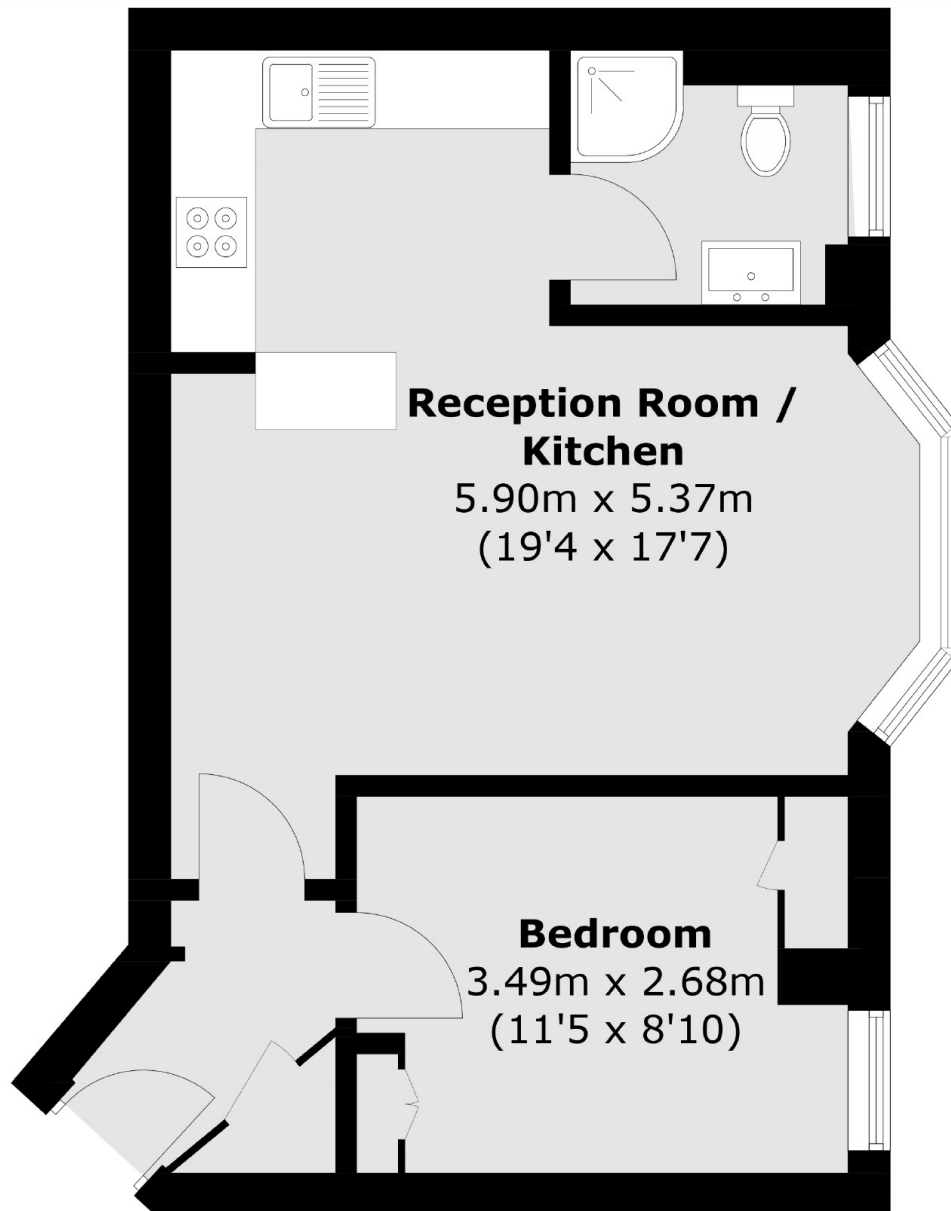
A one bedroom apartment in a purpose built, portered block. The property has a spacious open plan reception with wooden flooring, high ceilings, room to dine and a breakfast bar. There is built in storage in the bedroom and this is an ideal home or pied a terre.

Queens Court is in the heart of Bayswater and close to the Whiteley's regeneration project. There's plenty of transport links, shops and restaurants close by and the green spaces of Hyde Park are opposite.

Features

- One Double Bedroom
- Open Plan
- Wooden Floors
- Lift
- Porter
- Hyde Park

Queensway,
London, W2



Total area (approx.): 40.1 sq. m (431.6 sq. ft)

Dexters

Westbourne Grove
120 Westbourne Grove
London
W11 2RR
Sales
020 7313 3600

Energy Rating: C. We aim to make our particulars both accurate and reliable. However they are not guaranteed; nor do they form part of an offer or contract. If you require clarification on any points then please contact us, especially if you're traveling some distance to view. Please note that appliances and heating systems have not been tested and therefore no warranties can be given as to their good working order.

 **RICS** | Regulated
Estate Agent
and Letting Agent

dexters.co.uk