



Kensington Place, W8

£1,400,000

An impressive fourth floor (with lift) apartment in a secure, purpose built portered building. With a separate kitchen and a spacious reception room that has room to dine and leads out to the private balcony. Both bedrooms have in built wardrobes and there are two bathrooms (one en suite), plus there's an allocated underground parking space.

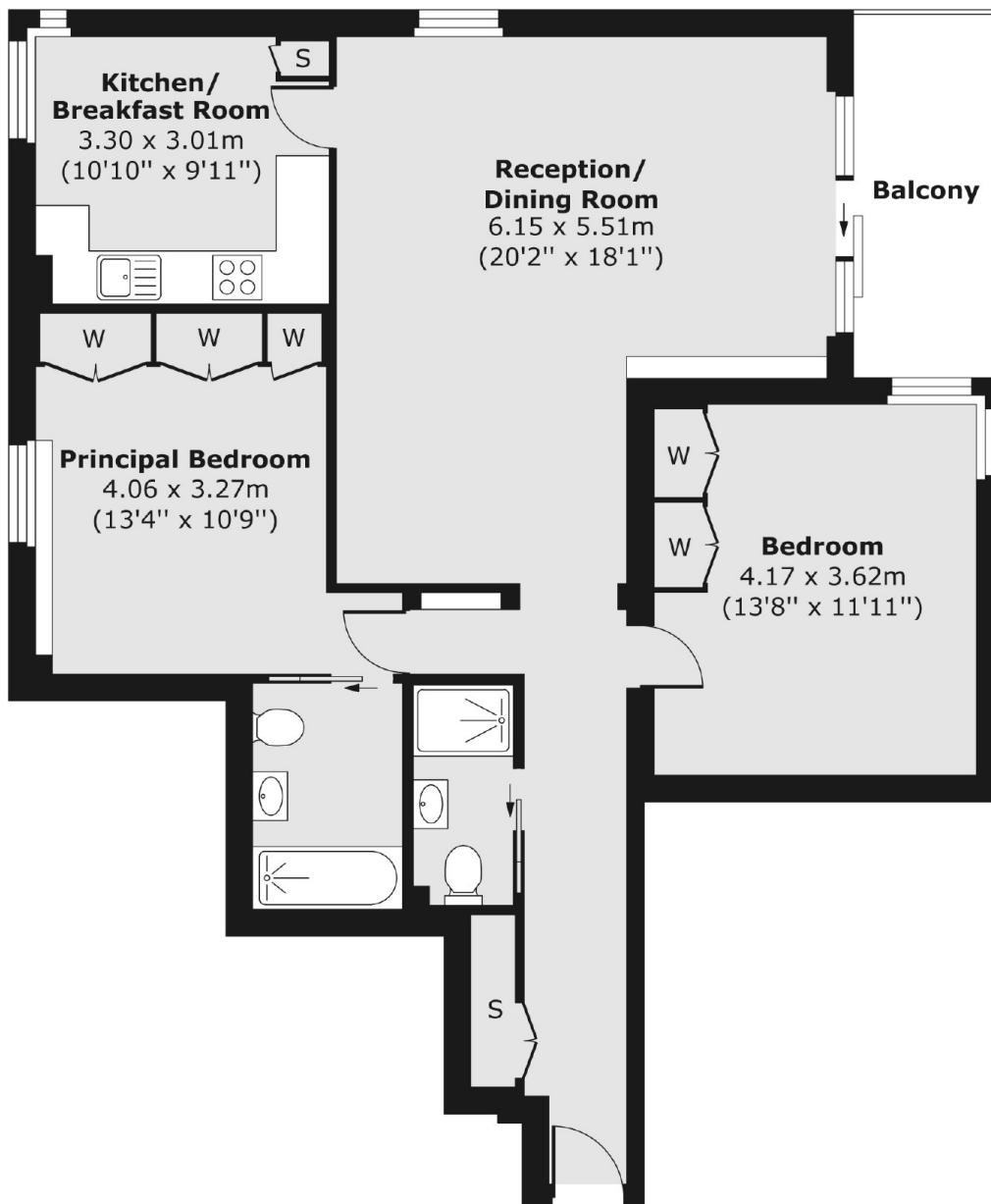
The property is ideally situated within a short distance to all the popular shops, bars and restaurants of both Kensington High Street and Notting Hill Gate and the green spaces of Kensington Gardens, Hyde Park and Holland Park.

Features

- Two Double Bedrooms
- Two Bathrooms
- Parking
- Balcony
- Lift
- Portered Building

Kensington Place,
London, W8

Fourth Floor



Total area (approx.) 89.11 sq. m (959 sq. ft)
Balcony area (approx.) 6.66 sq. m (72 sq. ft)