



Chepstow Road, W2

£550,000

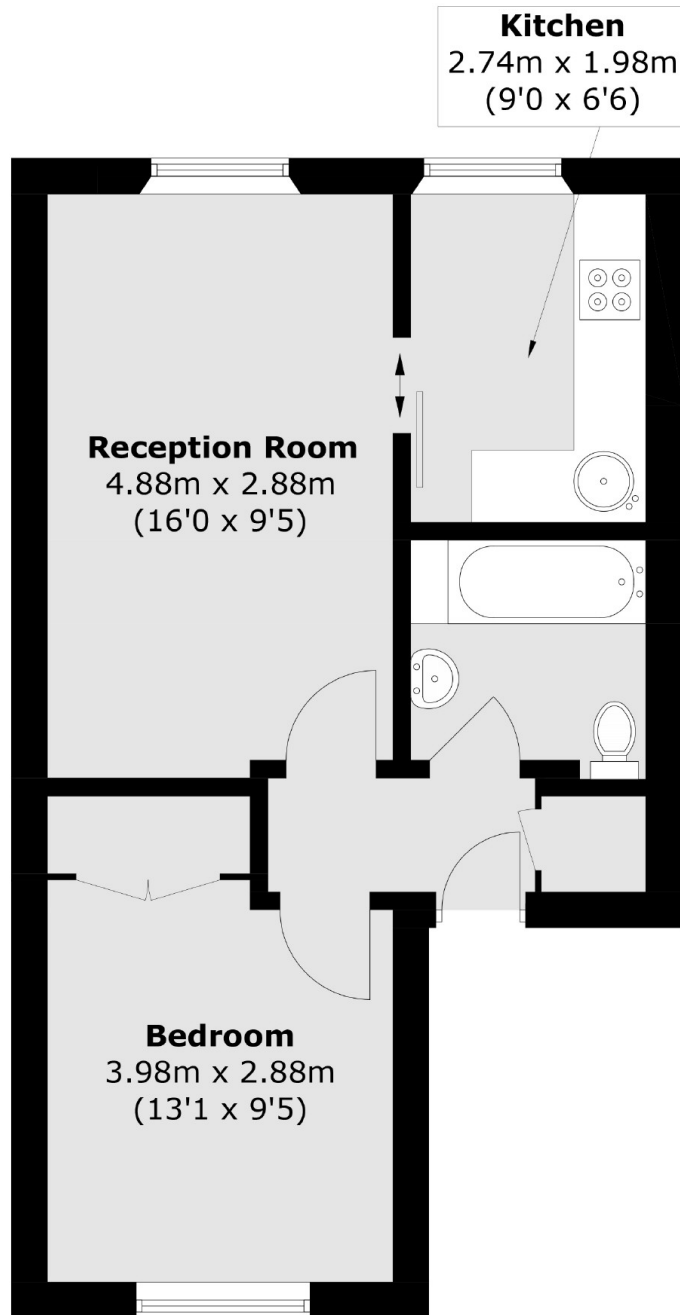
A one bedroom flat set on the second floor of a Victorian conversion building in Chepstow Road, W2. The flat is well proportioned throughout with the bedroom at the rear and west facing reception room and separate kitchen at the front.

The property is ideally situated within close proximity to all the shops, bars and restaurants of Portobello Road and Notting Hill Gate as well as the green open spaces of Hyde Park. Westbourne Park and Notting Hill underground stations are a short walk away and the flat offers easy access to the A40.

Features

West Facing Reception
Excellent Storage
Modern Double Glazing
Well Maintained Common Areas
Circa 154 Year Lease
Modern Bathroom

Chepstow Road,
London, W2



Total area (approx.): 38.6 sq. m (415.5 sq. ft)

Dexters

Westbourne Grove
120 Westbourne Grove
London
W11 2RR
Sales
020 7313 3600

Energy Rating: C. We aim to make our particulars both accurate and reliable. However they are not guaranteed; nor do they form part of an offer or contract. If you require clarification on any points then please contact us, especially if you're traveling some distance to view. Please note that appliances and heating systems have not been tested and therefore no warranties can be given as to their good working order.

 **RICS** | Regulated
Estate Agent
and Letting Agent

[dexters.co.uk](https://www.dexters.co.uk)